

FORERUNNERS OF THE HOLYLAND—TURKISH ADMINISTRATION

SCOPE: This exhibit illustrates the mail that originated from that area of the Ottoman Empire that became Palestine and eventually the State of Israel. It starts with a letter from Gaza as early as 1840, then shows examples from the U.P.U. period, continues with the majority of the mail that originates after 1880 and continues to the end of World War I in 1918. It illustrates the wide diversity of interests of the individuals of that period with the wide geographic range of destinations illustrated as well as by the depth and variety of the number of examples

HISTORY: Turkish postal services were apparently started between 1840 and 1846 with a courier service between Jerusalem and Beirut on a definite schedule. With time, service was extended to other cities as the general development of the country progressed. Eventually there were approximately 70 post offices and branches that are related to the State of Israel. However, the Turkish postal service had a very poor reputation with inefficiency, dishonesty, pilfering of money etc. As a result, foreign post offices were established in the mid 1850's that people who had originated from these specific areas preferred to use. This competition resulted in lower rates at various times. This area is not dealt with in this exhibit.

PRESENTATION: The main organization is by postal rates, then secondarily by post office origin and geographic destination. After U.P.U. mail we start with domestic and foreign mail, then post cards and continue with the various postal classifications. We conclude with printed matter, postage due, and odd rates.

ORGANIZATION:

- Frame 1: Pre U. P. U. including official mail, Egyptian P.O., littoral rate, domestic letters
- Frame 2: Foreign letters, domestic postcards
- Frame 3: Foreign postcards, Europe
- Frame 4: Foreign postcards Africa, Asia, North Central and South America
- Frame 5: Jerusalem Branch offices, railroad mail, domestic registered mail
- Frame 6: Registered foreign mail
- Frame 7: Registered continued, registered postcards, advice of receipt, printed matter
- Frame 8: Printed matter, official mail, money orders, postage due

IMPORTANCE: Serves as a basic background to the philatelic history of the creation of a philatelic issuing country. Illustrates the sources of origin of mail from this region. It also serves as a reference for specialty collections based on religion, especially for Judaica and postmarks of the Ottoman Empire.

RARITY: There are many unusual and uncommon destinations. Examples: Hawaii, Haiti and New Zealand.

STUDY AND PERSONAL RESEARCH : Earliest and latest dates for specific postmarks are noted that are different from specific specialized catalogues. Unusual destinations have served as sources for published articles in the SIP Journal

REFERENCES: Handbook of Holyland Philately, Norman Collins and Leopold Dickstein M.D. revised 1990. The Ottoman Post and Telegraph Offices in Palestine and Sinai, Collins and Steichele 2000

Classification : postmarks, letter C (Collins), S number 1/1 (Steichele)

C in right lower corner= certificate; S=signed

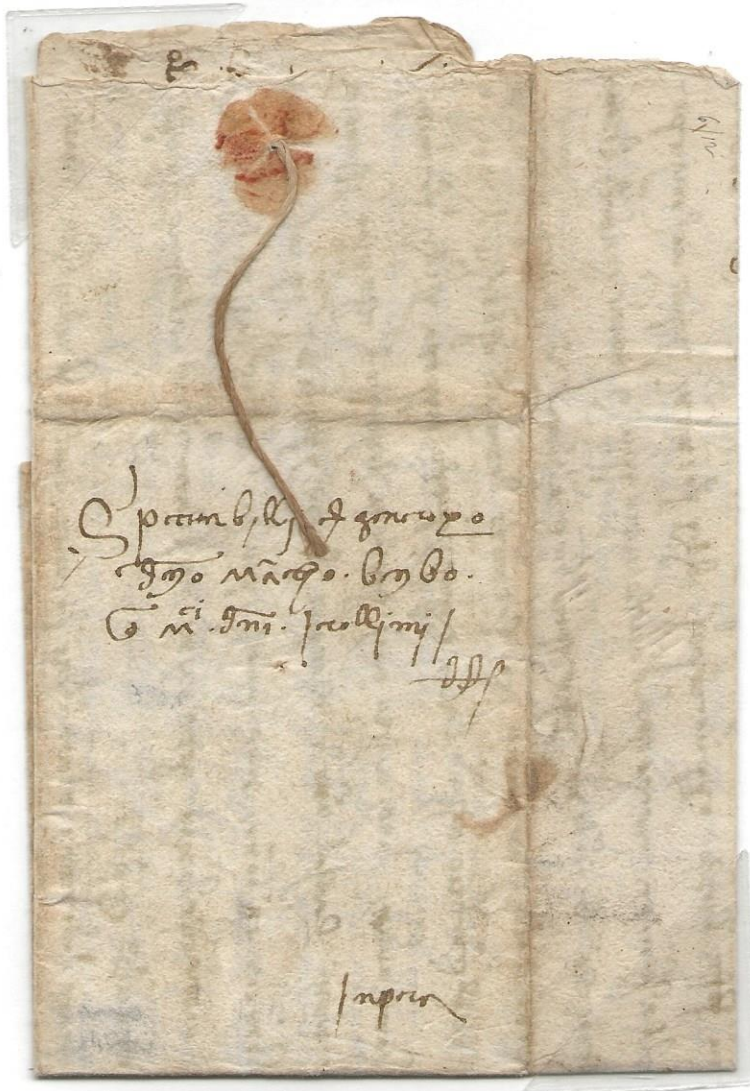
Significant items outlined in RED

TURKISH ADMINISTRATION

PREADHESIVE ERA

GAZA TO PERA, TURKEY

1480



Early letter written in mercantile Italian

Dated April 6 MCCCCLXXX

Top with trace of wafer seal and fastening string

TURKISH ADMINISTRATION

PREADHESIVE ERA

Acre to Livorno

1682



Dated 23 Feb 1682 with postscript 11 March

Carried "PAR CAPT MICHAEL QDC"

Addressed to Francesco Venturini, merchant, banker and ship owner in Livorno

From his and his successor's archives covering the Mediterranean in the years 1668-1707

TURKISH ADMINISTRATION

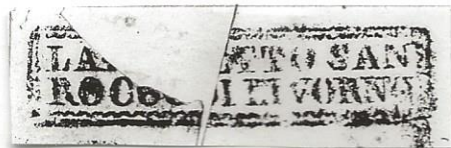
"28" decimes

PREADHESIVE ERA

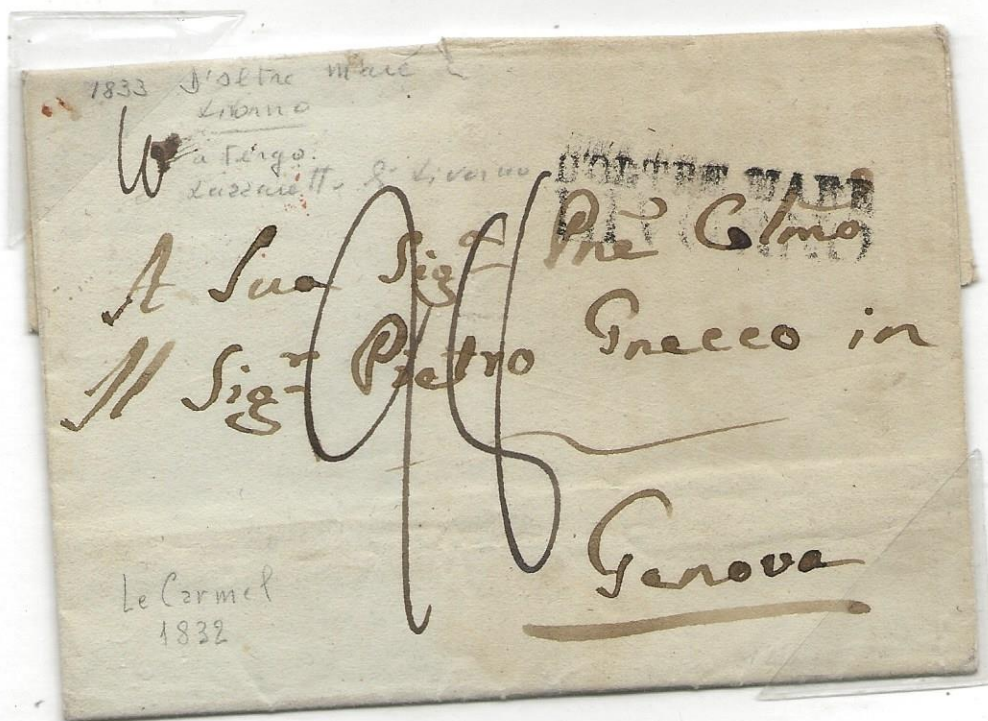
From Monastery on Mt. Carmel, Haifa to Genova, Italy

1832

EARLY DISINFECTED SHIP'S MAIL



22.8.BRE



Folded letter in Italian dated "DA CARMEL....1832"

Hand stamped: "D'OLTRE MARE LIVORNO" (FROM OVERSEAS LEGHORN)

Cachet struck in first Italian port

PREVIOUSLY UNRECORDED on mail from HOLYLAND area

Reverse: Framed disinfection cachet of LARANELT SAN ROCCO IN LIVORNO

Arrival: 22.8.BRE (OCT 22) (Red)

Message regarding church construction, loss of skilled workers, etc.

TURKISH ADMINISTRATION

Official Domestic Registered Letter

ACRE TO SAIDI VIA BEIRUT



Beirut Arrival Postmark
C PP 1

PRE PHILATELIC PERIOD

ONLY RECORDED REGISTERED LETTER WITH FREE DELIVERY



Official Mail.

No post office in Acre during pre philatelic period. Had relay station where mail was posted and sealed, forwarded by messenger to Beirut, fee paid, then delivered. Official mail within same province was free but registration required a fee.

Beirut negative seal on left "On Behalf of the Beirut Post Office"

Negative seal "Important Document"

TURKISH ADMINISTRATION

Official Mail-No Charge

PRE ADHESIVE PERIOD 1840-63

JAFFA

OFFICIAL MAIL to SAIDA via BEIRUT

FROM JAFFA

بیروت

صدا بابتی دفتر داری و نشانه اقامت لا ترمین
نظمی بنیله عربیه
عبدالله



During the pre philatelic period, Jaffa was without a Post Office. It had a staging station where the city mail was sealed and then carried to Beirut.

Description: Upper left: JAFFA (signed)

Lower left: Beirut Arrival Postmark (AN CANIB I POSTA I BEIRUT) "On behalf of Beirut Post Office"

Date: Illegible-contains an Arabic 3-1863?

Lower right: negative seal: (TAHRIRAT I MUHIMME) "Important Document", first introduced in 1841

Reverse: two red waxed seals intact and a third seal removed

TURKISH ADMINISTRATION

Official Mail -No Charge

JERUSALEM

November 1889

COURT'S CORRESPONDENCE

Law Court Letter with Blue Official Seal to Jaffa



Short lived Jerusalem PM (S 28/04 C PM 4) 1881-1890

Tahirat Muchimme Black Seal (Important correspondence exempt from postal charges)

Upper right official seal; repeated on reverse

TURKISH ADMINISTRATION

RAMLE

Official Mail-No charge

NON ADHESIVE MAIL

COURTS CORRESPONDENCE



TOP: 3 COVERS FROM SAME CORRESPONDENCE AND 1 POSTAL CARD RECORDED

PM: Negative seal "POSTE RAMLE SHUBEST" (S-43/01; C-PM 1) (black); negative seal, "Important Correspondence"; negative seal (violet) Reverse: round negative seal

BOTTOM: PM Ramle (S-43/02; C-PM 2) branch post office; negative seal "Important Correspondence"; Reverse: negative Crown Court seal (violet)

Addressed to Jaffa with arrival 21-11-898 (Feb 3, 1899) (manuscript)

C

TURKISH ADMINISTRATION

STAMPLESS FOLDED LETTERS TO BEIRUT

Forwarded by Government Messenger Service

HAIFA

Dated November 8, 1850

LETTER ILLUSTRATED IN STEICHELE

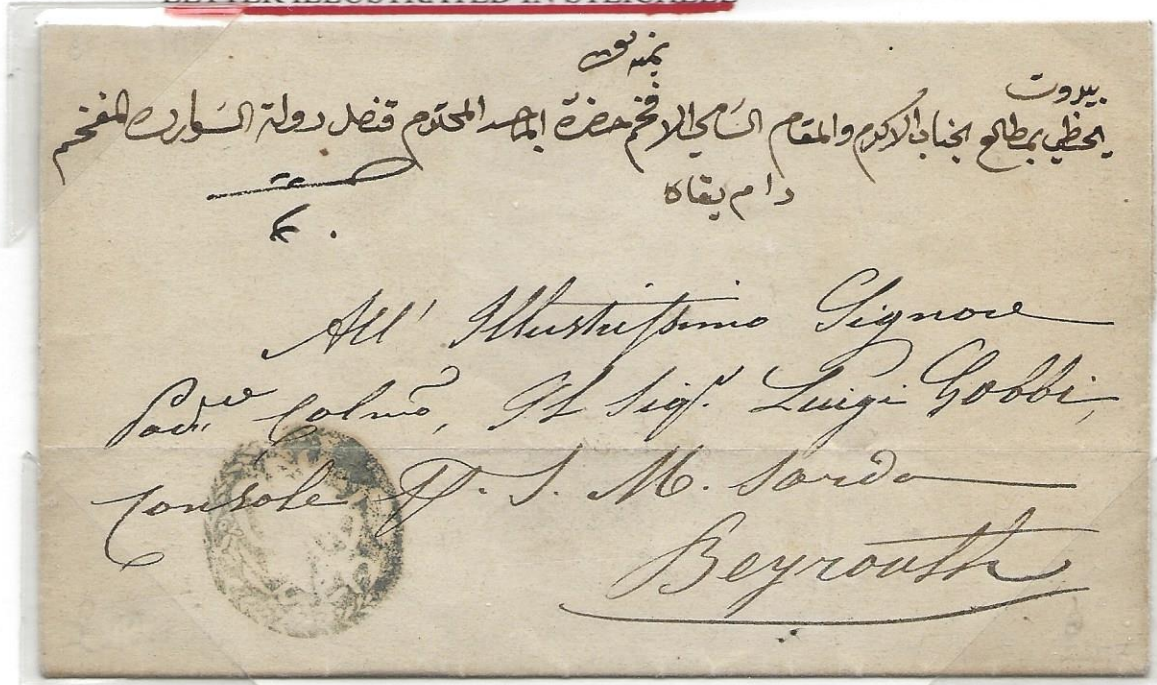
Rate 3 pi



Beirut

S 00/01

C PP 1



Letter to Consul of Sardinia in Beirut

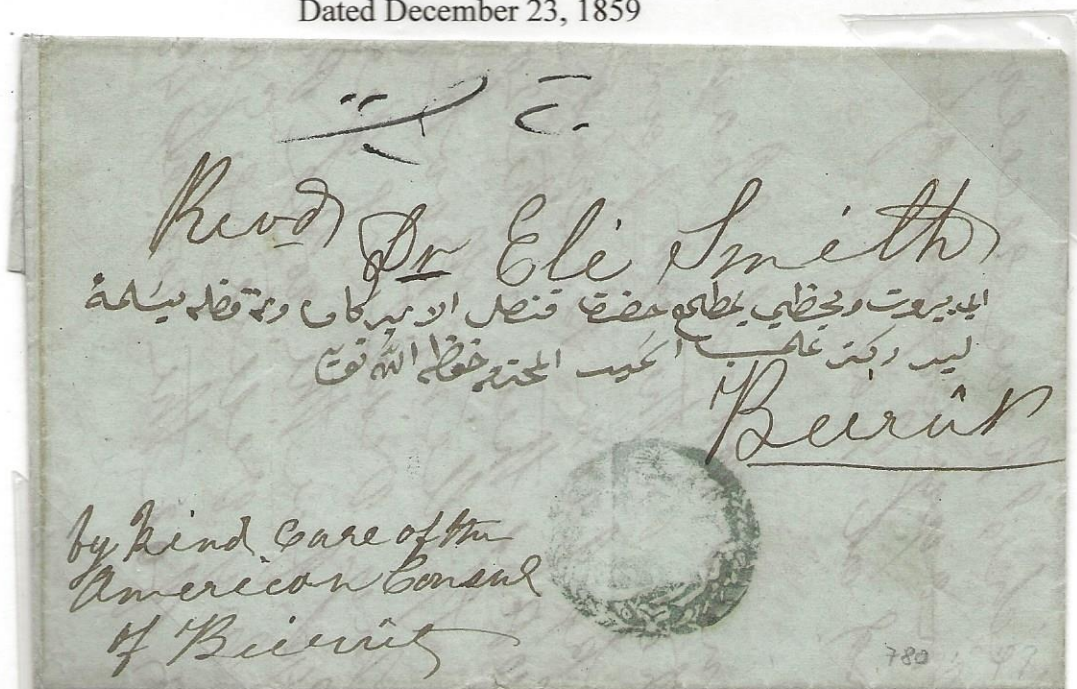
Beirut negative seal as arrival postmark-5 YEARS LATER THAN STEICHELE

Marked "11/3" 11 Dirhem -weight 3 Grush -rate Porto: 24 hours : equals 3 pi

JAFFA

Dated December 23, 1859

Rate 1 pi 20 pa



Marked "11/1" collected in Beirut 11 Dirhem- weight 1 Grush rate equals 1 pi 20 pa

To be delivered and picked up at American Consulate 14 YEARS LATER THAN STEICHELE

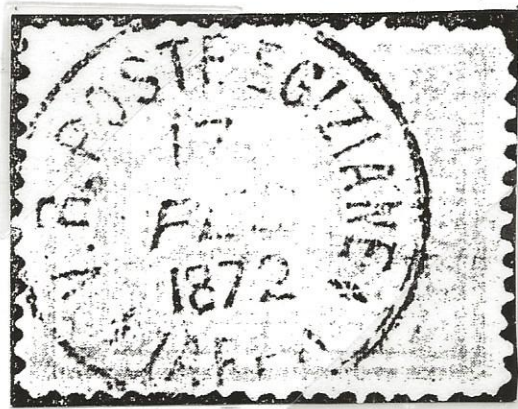
C

EGYPTIAN POST OFFICE

Letters Port to Port 1 pi /7.5 grams

JAFFA

AUGUST 18, 1871



Enlarged example of the used Egyptian Postmark

KHEDIVAL MAIL LINE opened two new routes, including Jaffa on July 14, 1870

Egyptian post offices organized by the Italians so postmarks inscribed in Italian

Offices closed Feb 18, 1872 due to strong foreign competition

2 COVERS and **19 STAMPS**, most damaged, **RECORDED**

Only 3 stamps of 2 pi for internal mail

Ex Sorani "Manuella"

TURKISH ADMINISTRATION

JAFFA

Littoral Rate 10 pa

October 21 (18) 92

LITTORAL MAIL



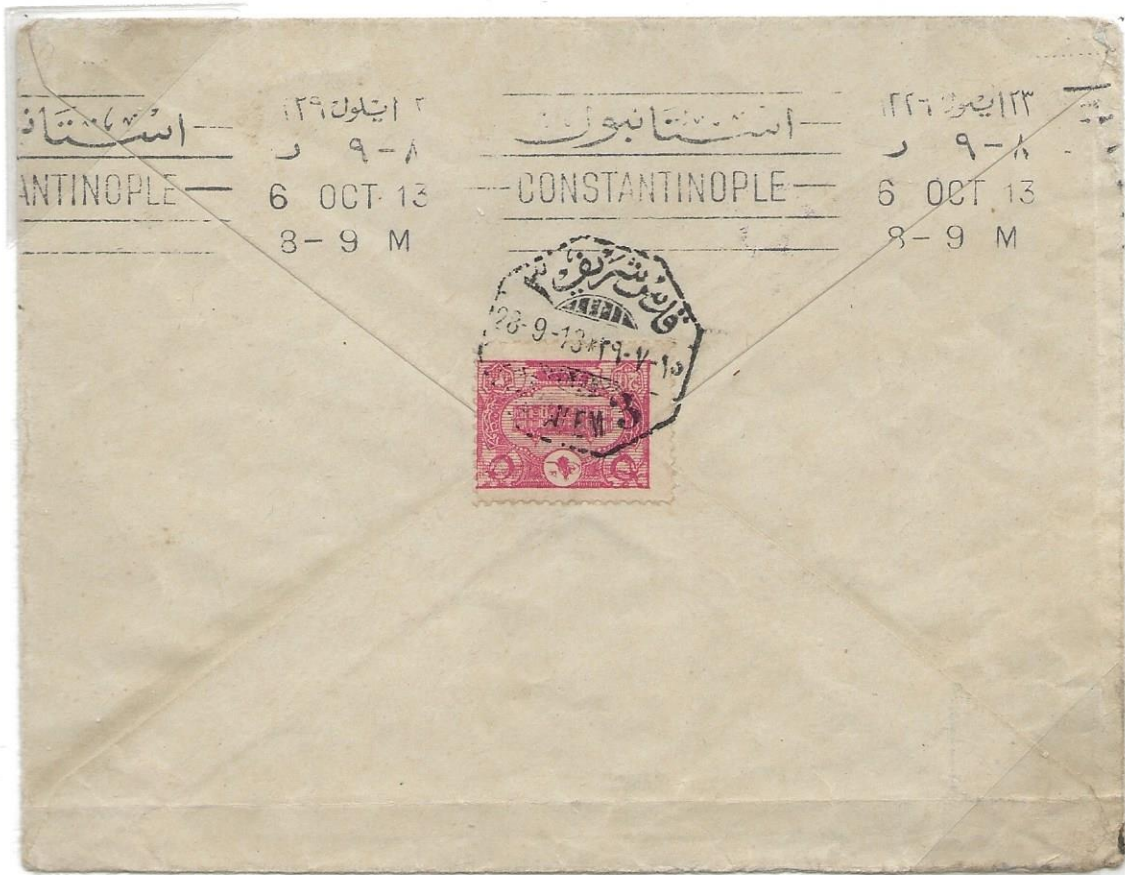
Jaffa (S 22/05) on 20 pa 1892 issue bisect with arrival Beirut October 24 (18) 92

JERUSALEM

September 28, 1913

Littoral Rate 20 pa

JERUSALEM GIVEN SPECIAL STATUS AS A "COASTAL TOWN"



Addressed to Constantinople in Arabic

Postmarks: Jerusalem 3 (S-28/19). Repeated on front

Arrival Constantinople machine cancel 6-Oct-13. Elapsed time 15 days

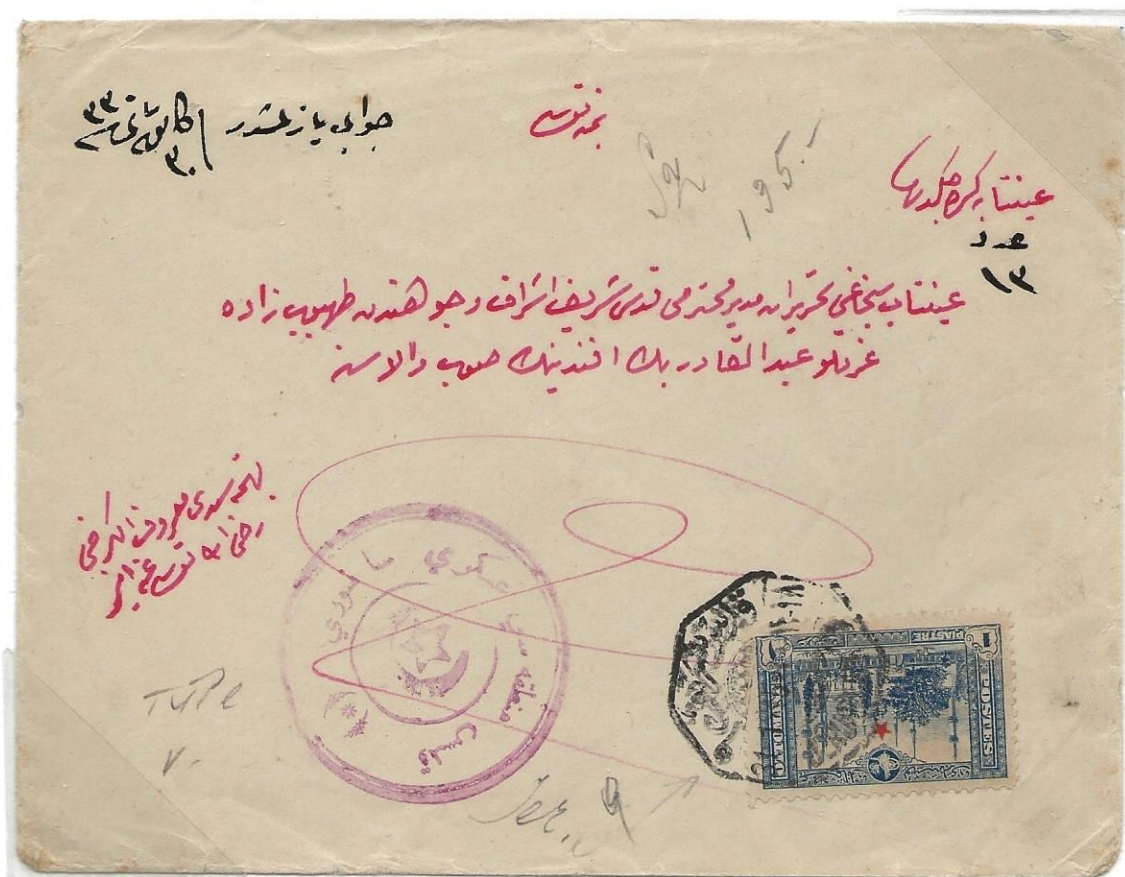
TURKISH ADMINISTRATION

Domestic Letter 1 pi

JERUSALEM 9

JANUARY 31, 1915

ALL ARABIC ADDRESS WITH SHORT LIVED POSTMARK



Jerusalem Postmark (S 28/24; C PM 29) in use 1913-1915

Jerusalem Violet Military Censor (S 28/42; C CM 2)

TURKISH ADMINISTRATION

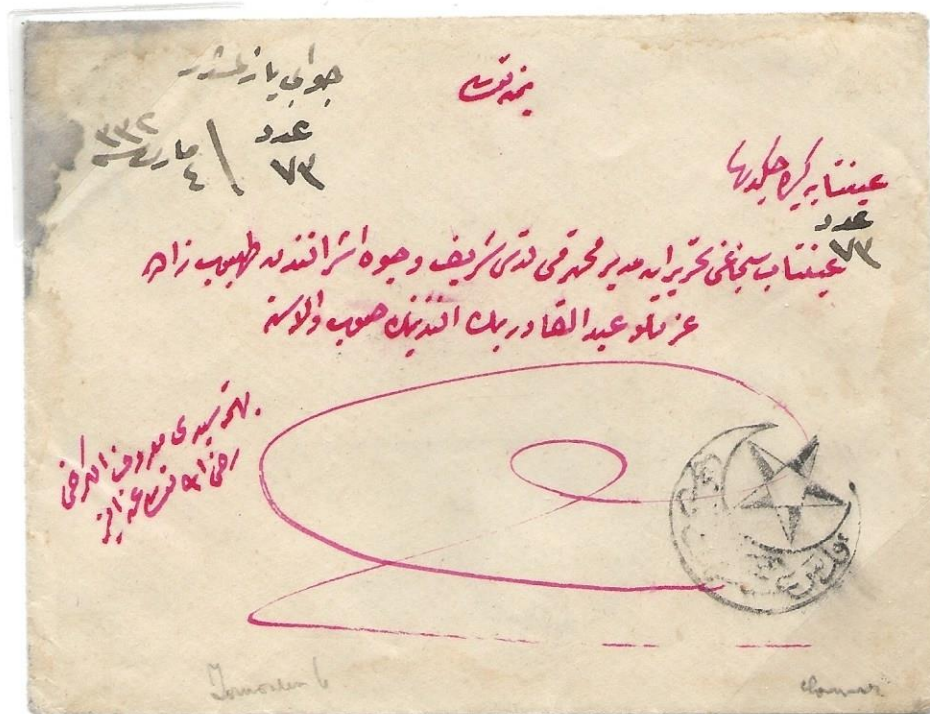
Domestic Letter 1 pi
+war tax 20 pa

JERUSALEM 6

March 3, 1916



ALL ARABIC ADDRESS



Jerusalem 6 postmark (S 28/16; C PM 19) in use 1911-1916

Jerusalem Military Censor (S 28/44; C CM 15)

TURKISH ADMINISTRATION

Foreign Letter 1 pi 10 pa

DJENINE

September 10, 1918

COVER TO ISTANBUL



Front reduced 50%

Very late cover to Der Aliya (Istanbul)

Postmark S 16/04, C PM 6

Front: First two lines are address

Next two lines sender's address

COMMERCIAL COVERS FROM DJENINE ARE RARE

Ex Sacher collection-Christie's sale 1989

TURKISH ADMINISTRATION

Foreign Letter 1 pi

JERUSALEM

January 13, 1891



S 28/05 C PM 7

EARLIEST RECORDED USAGE OF THIS POSTMARK

MARITIME MAIL TO FRANCE VIA FRENCH BOAT L.V. No 3



Cover addressed to Paris with French Maritime marking. Reverse bears Port Said January 15, 1891 and Paris arrival April 23, 1891 and partial distribution pm same date. French Maritime marking dated Jan 16, 1891

Apparently cover went overland from Jerusalem to Port Said but no evidence by which means.

TURKISH ADMINISTRATION

Foreign Letter 1 pi

NAZARETH

April 9, 1900



S 41/04

C PM 4



CT 1

PORTION OF A LETTER TO FRANCE WITH TELEGRAPH SEAL



Part of cover with excellent postmark and black negative telegraph seal

TURKISH ADMINISTRATION

Foreign Letter 1 pi
+ war tax 10 pa

JERUSALEM

Oct 10, 1917



S 28/ 27
C PM 33

SCARCE ALL ARABIC JERUSALEM 3 PM IN USE ONLY ONE MONTH



Jerusalem to Germany

Postmarks: Jerusalem; reverse: same; ISTANBUL DEPART 10 NOV. 1917; partial straight line 10 Nov ... ST

Franking on reverse: 5 pa x 2

Known dates of use: Oct 15, 1917-Nov 17, 1917. THIS EXAMPLE EARLIER THAN COLLINS

TURKISH ADMINISTRATION

Foreign Destination 2 pi

+Civilian PM- 85pa=2pi 5pa

Military PM-70 pa= 1pi 30 pa

+ war tax-?

RAMLE
JULY 26, 1917



S 43/03
C PM 4



S 28/53

IMPERIAL PRUSSIAN FLYING CORP 200
CANCELLED AT OTTOMAN CIVILIAN POST OFFICE
ONLY "FELDPOST" COVER KNOWN SO HANDLED



Cover has purple circular cachet of the FLYING CORP

Mistakenly handed in to Civilian Ramle post office who forwarded it to Jerusalem

Recognized and transferred to the German Army in Jerusalem

Postmarks: Remle 26-7-17 +same (reverse) Franking: 20 pa x 3+10 pa +5pa + (reverse) 10 pa
Jerusalem Feldpost Mil Miss 27-7-1917 Franking : 20 pa x 3 +10 pa

Reverse: German Censor label (transparent): "Militarischerseits unter Kriegsrecht Geoffnet"

Sender's name and Berlin address for mail to reach him (under label)

TURKISH ADMINISTRATION

Foreign Letter 2pi

JAFFA

APRIL 1, 1916



S 22/17
C PM 20

JAFFA TO GRAZ FROM AUSTRIAN-HUNGARIAN VICE-CONSULATE



Postmarks: Jaffa 5; Beirut April 12, 1916 (reverse); Graz 1, May 5, 1916
Registered (reverse); 157 and 408 both manuscript
Seal of Consulate, as above, on consulate stationery

S

TURKISH ADMINISTRATION

Foreign Letter 1 pi

TIBERIAS

November 2, 1892

UNUSUAL DESTINATION-EUROPE

SWEDEN



JERUSALEM - May 9, 1917

TOP: Tiberias (S-50/02); Arrival Stockholm December 5 and December 6, 1892

BOTTOM: Jerusalem (S-28/19); arrival Stockholm and cachet illegible
Reverse Stockholm 23-1-18 (x2) Elapsed time 140 days !! War
Left lower corner Jerusalem censor mark; right upper area cachet

TURKISH ADMINISTRATION

JERUSALEM

Foreign Letter 1 pi

**UNUSUAL DESTINATIONS-AFRICA
TUNISIA
SCARCE FRENCH SENSOR MARK**



Jerusalem (S-28/16) August 14, 1914, just a few weeks after start WW I; Port Said transit August 14, 1914
Tunis arrival September 6, 1914. Note early use of censor mark which only started on August 2, 1914

GERMAN EAST AFRICA DAR ES-SALAM

**Foreign Postcard 20 pa
Message dated July 22 (18) 97**



JAFFA (S-28/06); transit Post Said 28 VIII 97; Aden SE 6 97; arrival Dar es-Salam 29 9 97

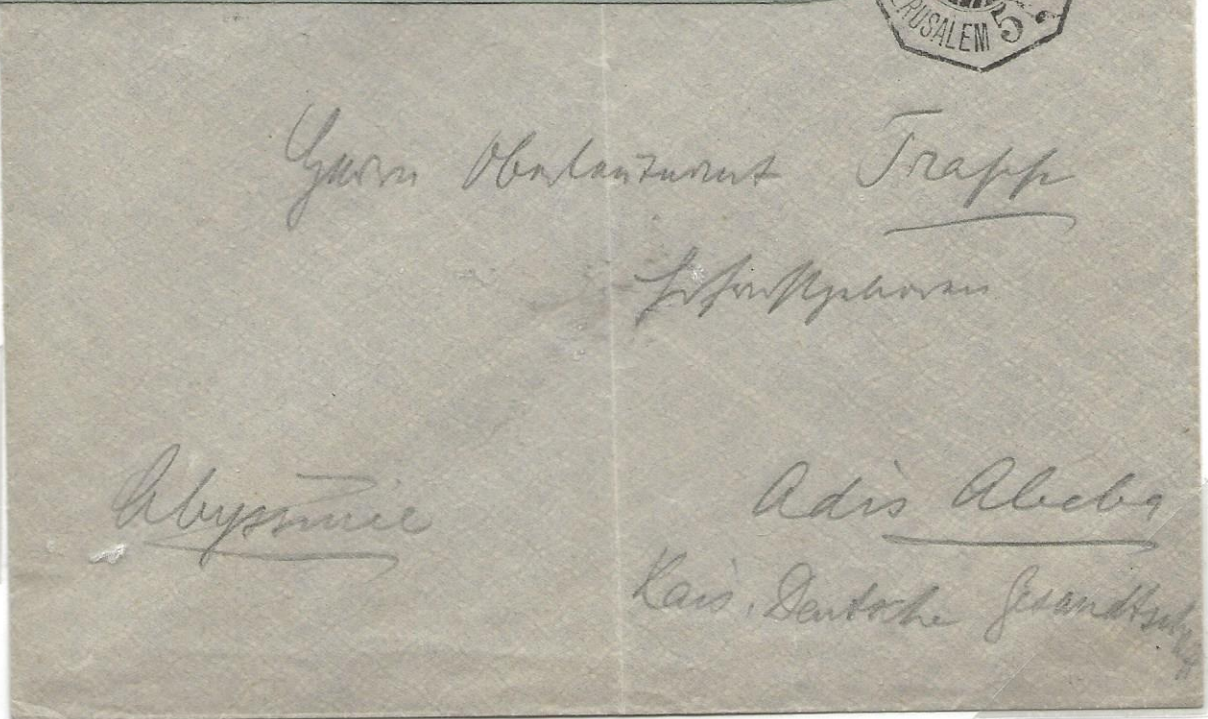
TURKISH ADMINISTRATION

HAIFA

Foreign letter 1 pi

UNUSUAL DESTINATIONS -AFRICA

GERMAN EAST AFRICA - DAR ES SALEM



ETHIOPIA

TOP: Haifa (S-15/04; C-PM 6) Jan ... 1900; Transit Alexandria A 1900; Suez AMBULANT JAN 17-1900; Aden - JAN 21, 1900; Arrival Dar es Salem Feb 19, 1900

BOTTOM: Imprinted entire 20 pa foreign postcard rate
Jerusalem (S-28/21; C-PM 25) 24-1-14 to Addis Ababa, German Military Mission

TURKISH ADMINISTRATION

Foreign Letter 1 pi

JAFFA

May 6, 1890



S 22/04
C PM 5

HOLYLAND POSTAL HISTORY



Printed cover with two letters, written by sailor while on board in Haifa Port dated Port Said May 5 and Jaffa May 6

Postmarks: Jaffa; reverse: transit Port Said 7 V 90 and London May 1890. Arrival Boston May 26, 90

Fascinating description of view etc. Describes objects in water (jelly fish) which, obviously, he had never seen.

TURKISH ADMINISTRATION

Foreign Letter 1 pi

JERUSALEM

1888



S 28/03
C PM 3

BOXED "T" ON COVER TO NEW YORK



Franking: 20 pa x 2 = 40 pa=1 pi Correct rate for foreign destination

Postmarks: Jerusalem Turquie 2-?-? (blue) x 2

Reverse: Arabic illegible 4 II-88 T2; arrival New York Feb 4-?; H 2-24- 88; NA.....2-24-88;
red wax seal, unopened
Reason for boxed "T" unknown

TURKISH ADMINISTRATION

Foreign Letter 1 pi
+ war tax 10 pa

JERUSALEM 2

February 7, 1917

COMMERCIAL CHARITABLE REQUEST FROM JERUSALEM TO U.S.



Cover from German Jewish Charitable Organization to New York City

Jerusalem Postmark (S 28/18; C PM 22) x 2

Boxed Turkish Date Stamp

Jerusalem Military Censor Mark (C CM 5)

Two Illegible Postmarks on Reverse –one Turkish with Date

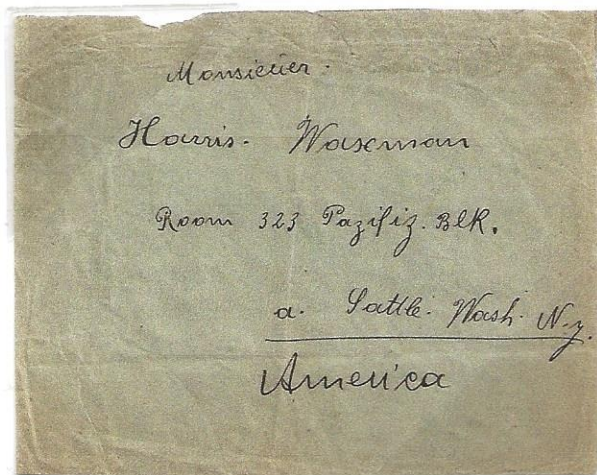
JUDAICA ITEM

TURKISH ADMINISTRATION

Foreign Letter 2 pi

SAFED

August 21, 1918



Octagonal blue Safed 1 (S 17/07 C PM 7) to Seattle, Washington; NO WAR TAX



TURKISH ADMINISTRATION

Domestic Postcard 20 pa

JAFFA

May 10, 1888

JAFFA TURQUIE (S 22/04) in RED



Imprinted 20 pa postcard to Jerusalem with arrival mark on front (very light)

Arrival Postmark: May 12, 1888 in black

TWO POSTCARDS recorded with this postmark in red per Collins

Forerunner postmarks in red are scarce, supposedly a total of less than ten recorded

TURKISH ADMINISTRATION

Foreign Postcard 20 pa

JERUSALEM

January 14, 1913

SUPERB FIRST DAY POSTMARK



JERUSALEM 3, ONE OF THE RAREST OCTAGONAL POSTMARKS

Collin states this is first day of use. Pollack originally thought that the first day was January 15, 1913

Postcard printed in left upper corner "Jerusalem, first view" on reverse

This is probably is a philatelic example as reverse has no message

TURKISH ADMINISTRATION

JAFFA March 10, 1898

Domestic Postcard 20 pa

HISTORICAL SIGNIFICANCE



NAZARETH Feb, 1918

Domestic Postcard 20 pa

+ war tax 10 pa



Top: ADDRESSED TO DAVID ADELOVITCH (1863- 1953) in Jaffa-Rishon Le-Zion
Famous pioneer of settlement. A founder of the Carmel Wine Growers Cooperative of RLZ
Important member of Rishon Le-Zion government and community
Founded first kindergarten in Palestine in 1898-same year as mailing of this postcard
Message is in Hebrew (Yidish ?)

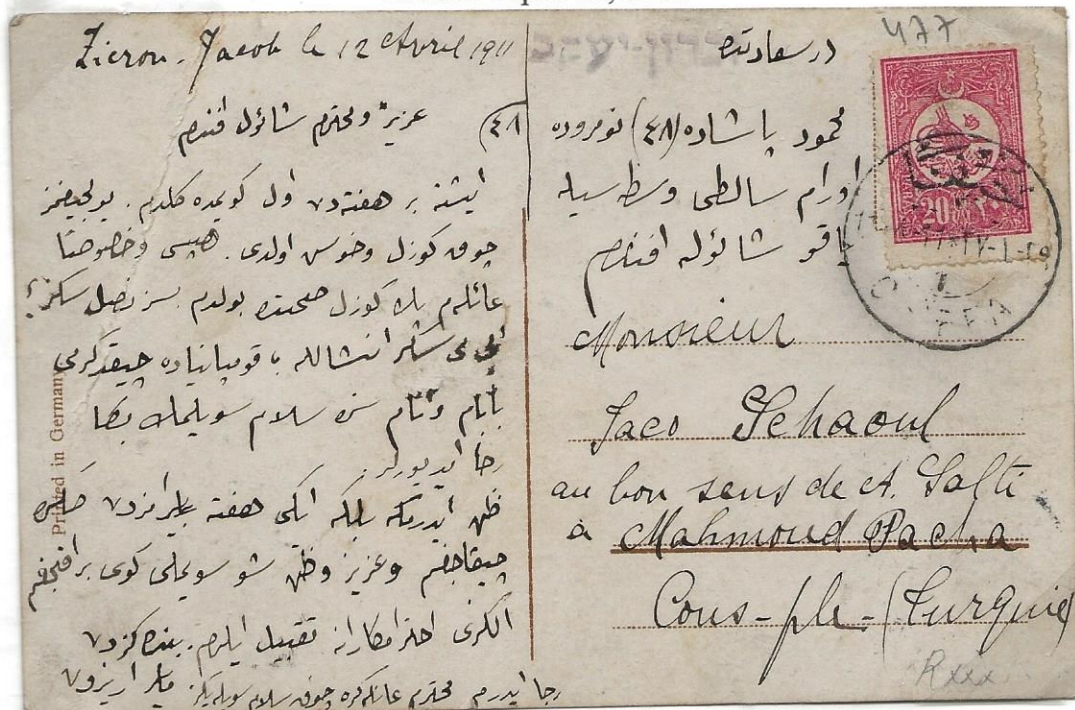
Bottom: Postcard to destination within Ottoman Empire. Message in Arabic. Reverse censor marking
Postmarks: All Arabic NABARA (NAZARETH) 1, ?-2-18 (x 2); reverse: pm Arabic illegible

TURKISH ADMINISTRATION

Domestic Postcards 20 pa

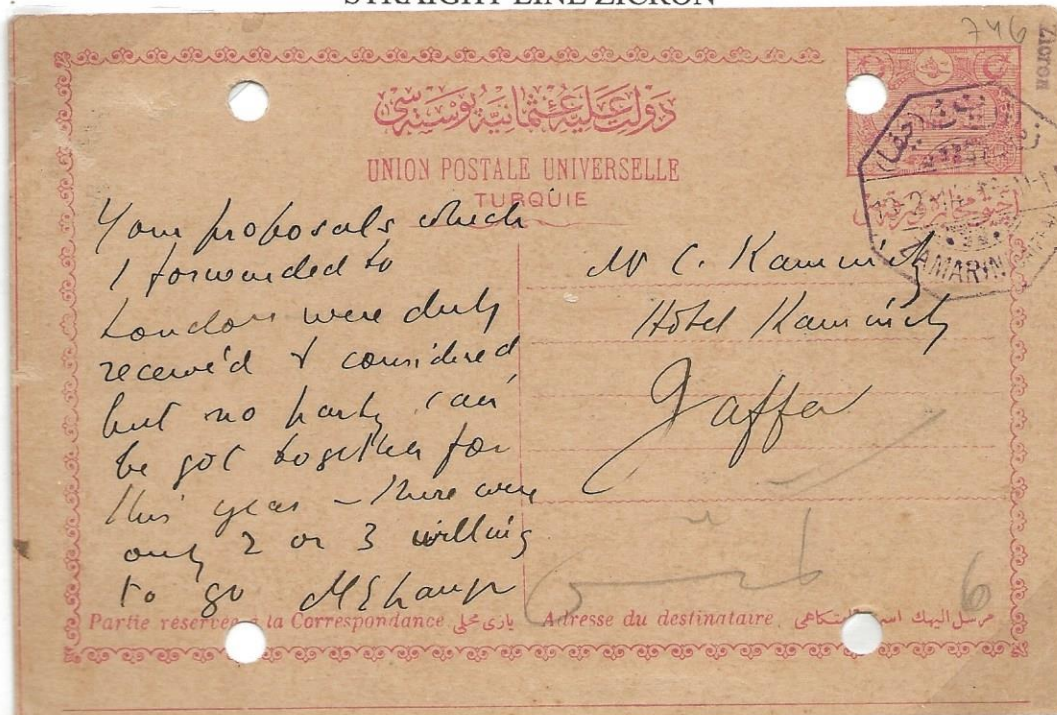
**JEWISH COLONY
ZICHRON YA'ACOVE**

CAIFA April 12, 1911



Zichron Ya'Acove to Constantinople. Postmark dated Caiffa 1, 29. 327= 12.4.1911

**ZAMARIN Feb 13, 1914
STRAIGHT LINE ZICRON**



From Zamarin (Caifa), with ZICRON (right upper corner) to Jaffa, arrival on reverse illegible
 Zamarin is Arabic name for Zicron Ya'Acove

TURKISH ADMINISTRATION

**Domestic Stationary 20 pa
+ war tax 10 pa**

HAFIR

APRIL 25, 1916



S 18/01

C PM 1

ONE OF TWO RECORDED

ILLUSTRATED IN COLLINS



20 pa postal stationary envelope to Saida, Lebanon

Franking: Additional three 10 pa stamps

Postmarks: Hafir 25-4-16 (x 2); reverse: Saida 6-5-16

Collins and Steichele- 2 covers, 4 postcards, and one money order recorded ; most same correspondence

Censor mark in left lower corner-only example

TURKISH ADMINISTRATION

UNUSUAL CENSORSHIP MARKINGS
JERUSALEM-- UNLISTED IN VIOLET C-CM 5

Internal Postcard 40 pa
Includes war tax 20 pa



Jerusalem 2 March 22, 1917 to Beyrouth with arrival March 27, 1917 (reverse). Message in Arabic
ONE LINE ARABIC CENSOR—C-CM2 (RARE)
NEW EARLY DATE UNRECORDED Dec 7, 1914

Registered Mail
Internal 60 pa
Letter 20 pa
Registration 40 pa



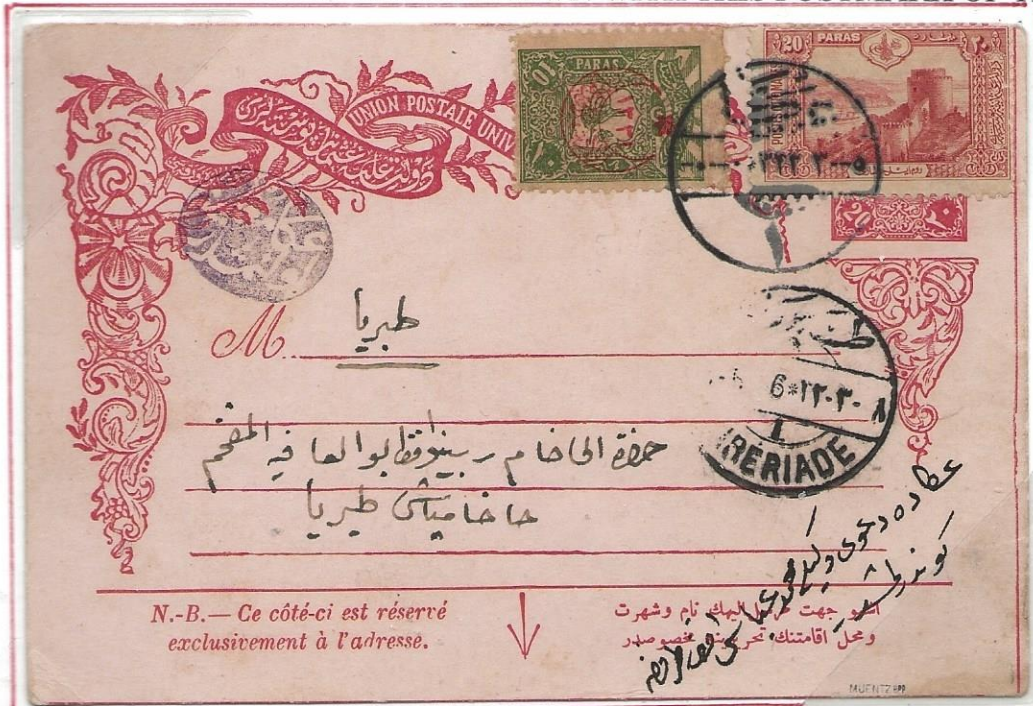
Jaffa 5, Dec 7, 1914 to Beyrouth arrival Dec. 12, 1914 (reverse). Registration cachet "RECOMMANDIRT" not listed in Collins. Registration no. top left; censor mark top right

TURKISH ADMINISTRATION

ACRE—March 1916

Domestic Postcard 20 pa
+War Tax 10 pa

ONLY POSTCARD KNOWN WITH THIS POSTMARK OF TIBERIAS



Acre postmark to Tiberias with arrival postmark in use between March 19, 1914 to July ? 1918
Censored in Acre; marking not listed in Steichele for use in city

HAFIR October ?1915

ONE of 16 RECORDED POSTCARDS



Hafir to Aleppo. Message dated in Arabic 22-7-1331=Oct 5, 1915

From army officer sending greetings to officer who is a physician

Jerusalem military censor markings (S 20/44; C CM 5) in use December 10, 1915 to Oct ? 1917

Earlier than Collins; not noted in Steichele. Colored card: "BALBEK-TEMPLE OF THE SUN"

TURKISH ADMINISTRATION

BETHLEHEM Dec 1899

Foreign Postcard 20 pa

NEGATIVE TELEGRAPH MARK USED AS A POSTMARK



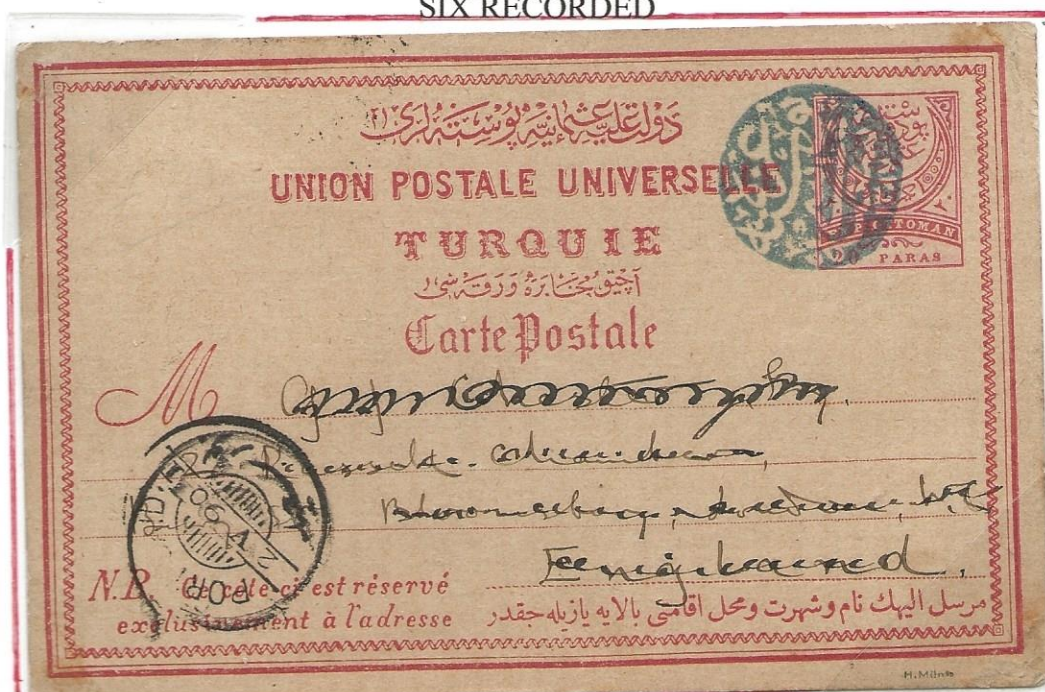
Colored picture postcard to Switzerland --"LETZTE hl CHRISTNACHT"

Postmark: "Bethlehem Post and Telegraph Office" with year

Transit: Jerusalem Dec 25, 1899; Satigny Jan 22 and Jan 23, 1900

GAZA May 1890

SIX RECORDED



Gaza to England. Address and message crossed out

Gaza negative seal in blue

Postmark: Port Said May 2, 1890

TURKISH ADMINISTRATION

Foreign (?) Postcard 1 pi 35 pa

JAFFA

APRIL 27, 1909

FIRST DAY JAFFA 7 POSTMARK



Overprinted "SULTAN MEHMAD HAMESH 10 NISSAN 1325"

Addressed to : "Le Toire" Poste Restante but no return address

Various 1908 issues overprinted for Jaffa local issue

Issued April 1, 1909, for accession of Mohammad V

The postmark is Steichele 22/13 (violet) and is extremely rare on cover (exact number ?)

Only 3 postcards and 3 receipts recorded. Latest date recorded April 23, 1916

This exhibit contains TWO covers, this one and on the next page

TURKISH ADMINISTRATION

FRENCH ADMINISTRATION

Foreign Postcard 20 pa

Printed Matter 5 c

COOPERATION BETWEEN TWO DIFFERENT POSTAL SERVICES

TURKISH MAIL FORWARDED TO FRANCE WITH FRENCH POSTAGE

VERY UNUSUAL COMBINATION



S

Turkish postcard apparently posted in Istanbul addressed to a hotel in the city.

Franked with 20 pa Turkish postage for interior postcard rate

Readdressed to Paris by added label

Postmarked with blue 10-18-98 "CONS-PLÉ-GALATA DEPART"

Apparently forwarded to Jaffa, received 5c domestic French adhesive with French Jaffa PO 10-20-98 pm

French domestic adhesives were accepted in the French post offices in the Ottoman Empire

Message on reverse "Come tomorrow", signed. This would allow this postcard to be sent with a printed matter rate, as less than 5 words, and would account for the 5 c French adhesive. However, the 20 pa Turkish adhesive should have been sufficient for mail to Paris.

Postcard German printing of view of "Konstantinopel" with small blank square in left lower corner for message

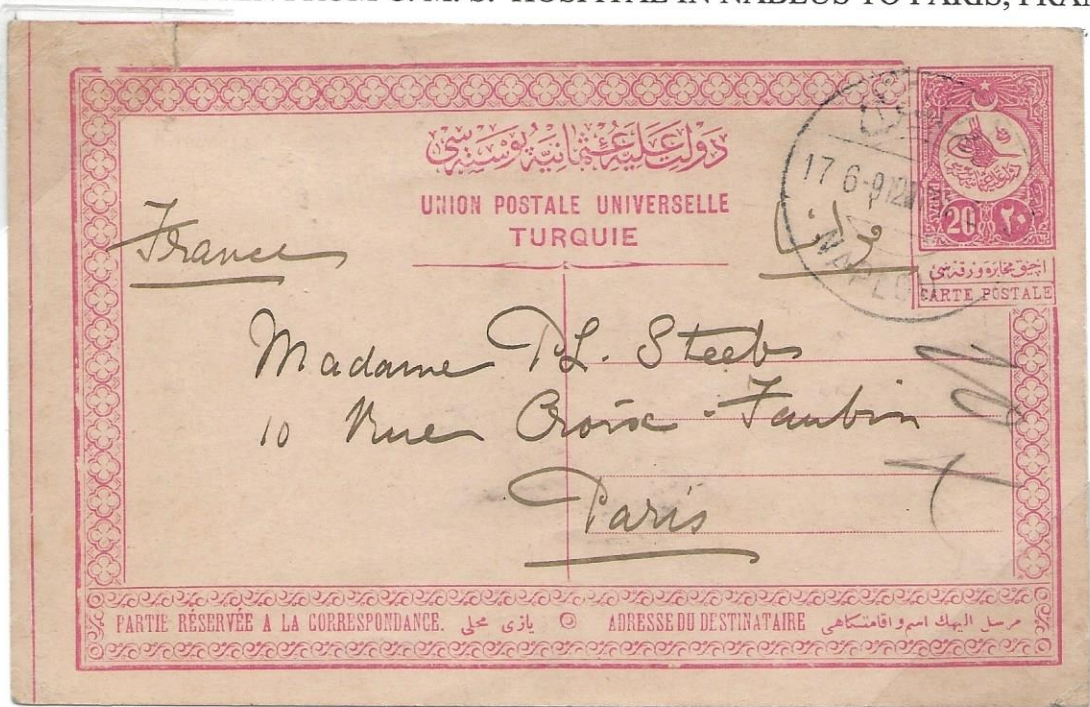
TURKISH ADMINISTRATION

Foreign Postcard 20 pa

NABLUS

June 17, 1912

POSTCARD WRITTEN FROM C. M. S. HOSPITAL IN NABLUS TO PARIS, FRANCE



Postmark Nablus (S 40/06 C PM 9)

TURKISH ADMINISTRATION

Foreign Postcard 20 pa

HAIFA (CAIFA)

JAN 18, 1890

NEW LATEST DATE



Caifa (S 19/03; C PM 4) to France

Previous latest date July 27, 1889- this about 6 months later

Collins states seven entire items recorded. This is number 8

Most of the message scratched out but written date is clear "Haifa 18/1- 90"

TURKISH ADMINISTRATION

Foreign Postcard 20 pa

ACRE



S 01/05

C PM 8

POSTMARK AUG 1885 WITH DATE INVERTED- 2 YEARS EARLIER THAN STEICHELE



Postcard to France

Postmarks: Transit Alexandria 22 VIII 85; Paris Aug 29, 85; arrival St. Mande Seine Aug 30, 85

TURKISH ADMINISTRATION

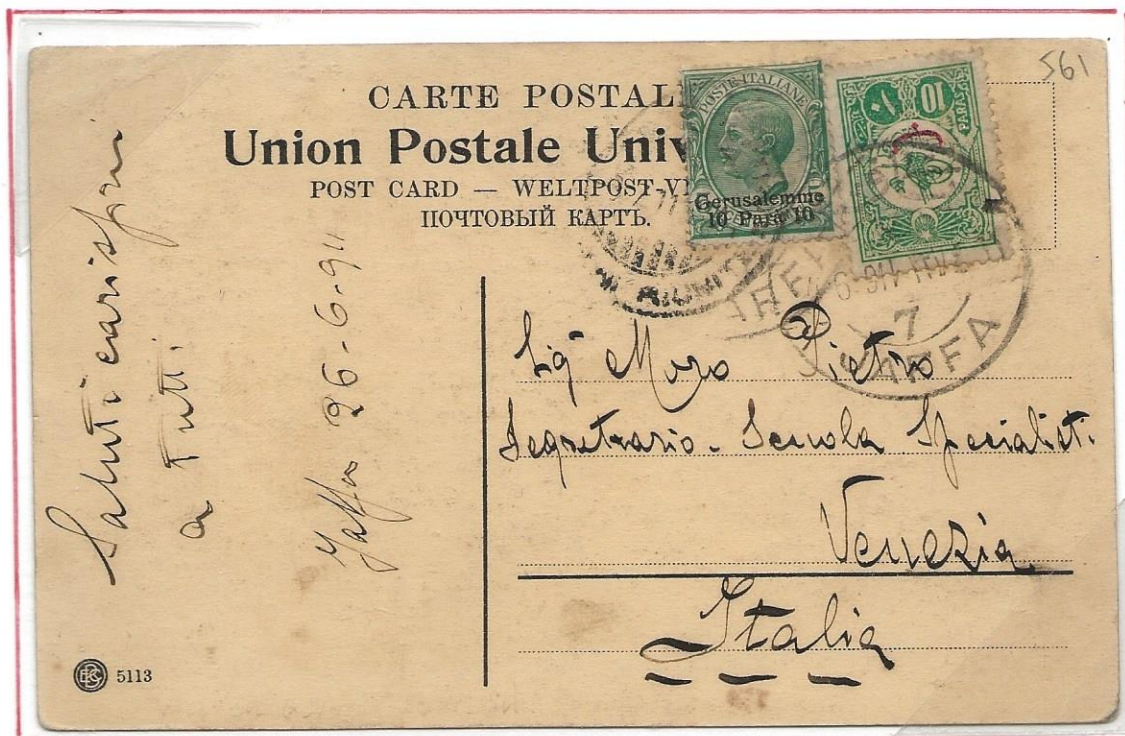
Foreign Postcard 10 pa

JAFFA
June 26, 1911



S 22/13
C PM 16

EXTREMELY RARE COMBINATION
ITALIAN LEVANT AND TURKISH ADHESIVES



Picture postcard to Venice (Mosque D'Omar) dated 26-6-911
Italian Levant stamp not valid as Jaffa had no Italian post office.
Franking: Italian Levant 10 pa (1909) and Turkish 10 pa (1909)
Rate: 10 pa printed matter as message less than 5 words
Postmarks: Jaffa 7, 26-6-911; arrival: Venice Riunit....

TURKISH ADMINISTRATION

Foreign Postcard 20 pa

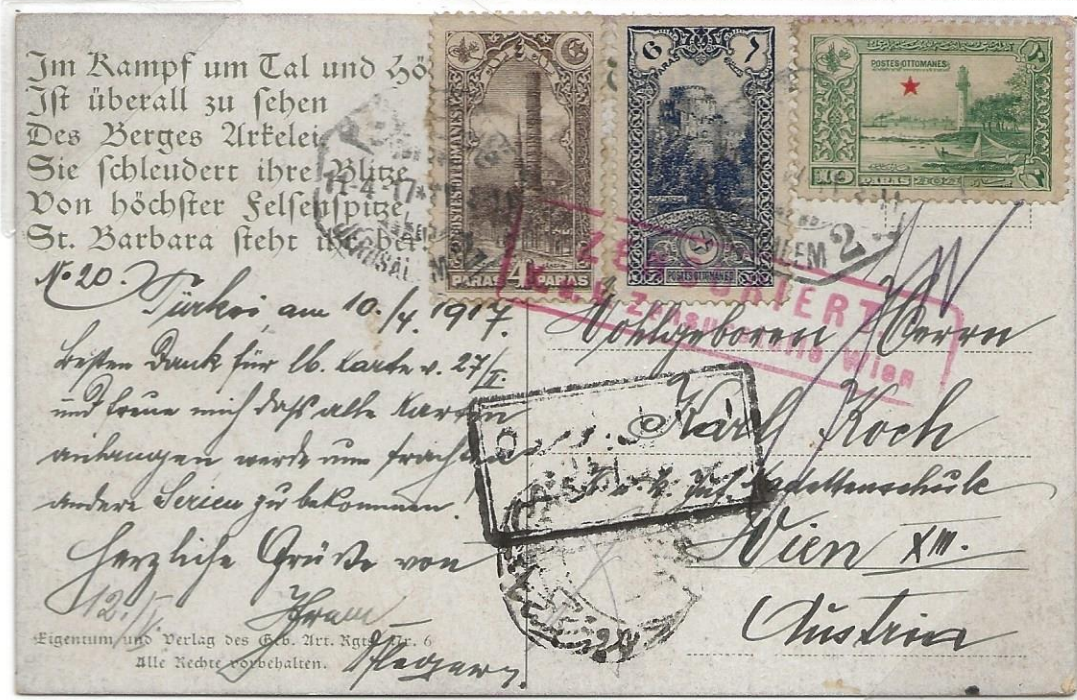
JERUSALEM

VERY EARLY DISPATCH, THREE WEEKS AFTER EARLIEST RECORDED DATE OF 3-2-07
ORNAMENTAL UPU CARD TO KARLSBAD, AUSTRIA



Jerusalem March 23, 1907 (S 28/09; C PM 12) with arrival Karlsbad April 12, 1907

GERMAN PRINTED COLOR VIEW CARD TO VIENNA WITH THREE CENSOR MARKS



Jerusalem 2 (S 28/18; C PM 22) April 11, 1917;

Jerusalem Military Censor (C CM5); Turkish Black Box Istanbul Censor; German Red Censor Cachet

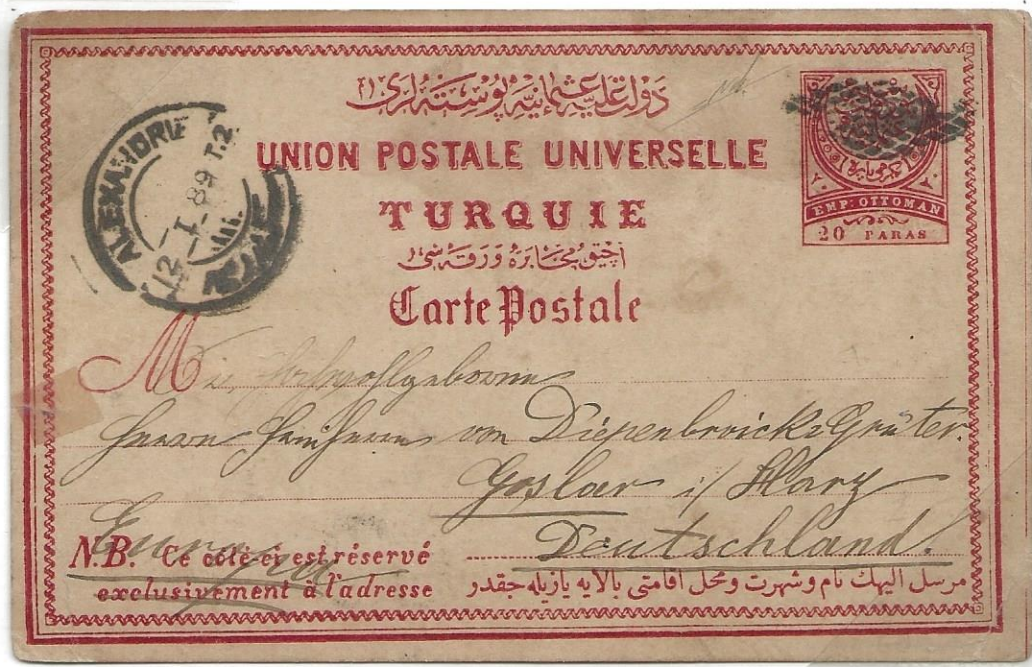
TURKISH ADMINISTRATION

Foreign Postcard 20 pa

JAFFA

MARITIME MAIL

RETTA MARK ADDED IN PORT SAID IN HARBOR



S

Imprinted postal card to Germany. Message dated Jaffa 10-1-89 (Jan). Transit PM Alexandria 12-1-89

AMPHITRITE OE. LLOYD



S

Addressed to Austria. Message dated "5/3/07". Ship's mark dated Mar 7, 1907. Transit PM Port Said 8 III 07

TURKISH ADMINISTRATION

JERUSALEM

Foreign postcards 20 pa

UNUSUAL DESTINATIONS -EUROPE

GIBRALTAR



Postcard dated July 4, 1914. Jerusalem (S-28-/24; C-PM 29) July 8, 1914 via London forwarded to Gibraltar July 20, 1914. Cachet: July 21, 1914. THOMAS COOK AND SONS Travel Agency as receiving agent.

LUXEMBOURG



Damaged Circle



Jerusalem (S-28/06; C-PM 8) April 12, 1900; transit GALATA DEPART April 18, 1900; Luxembourg- Ville April 22, 1900 Hotel cachet "GRANT NEW HOTEL-A&J MARCOS"

TURKISH ADMINISTRATION

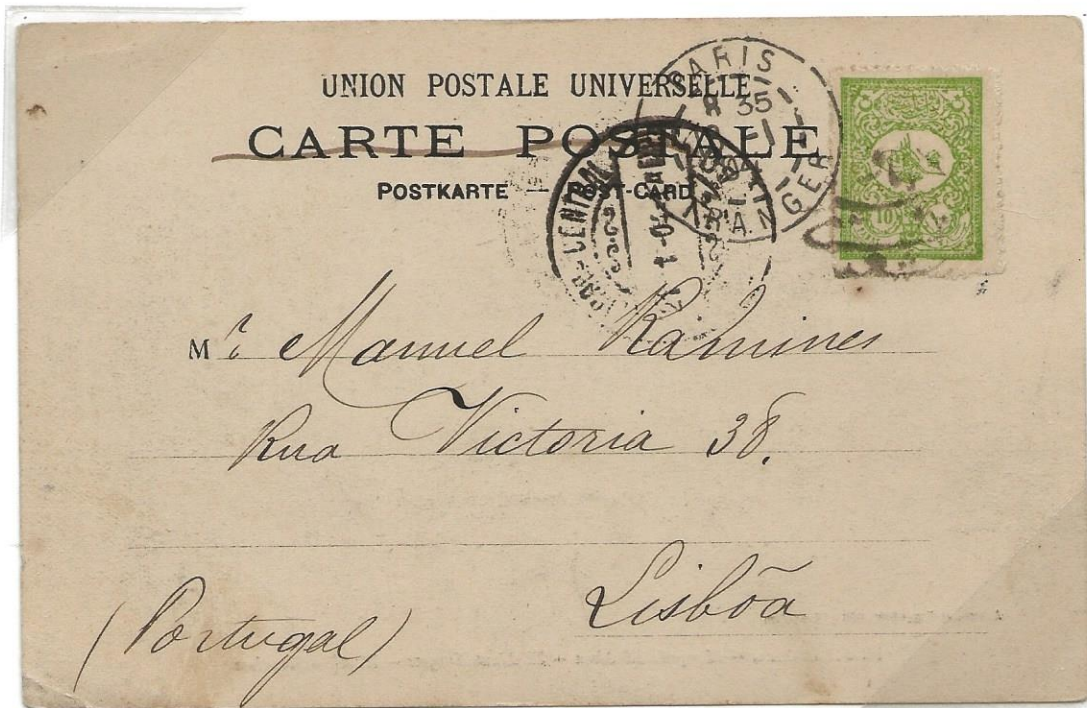
Foreign Postcard 10 pa

UNUSUAL DESTINATION-EUROPE

PORTUGAL



S-23/01
C-PM 9



Jaffa PM YAFFA POSTA SHUBESI. Message dated "4/1/04"; transit pm Paris 18-1-04; arrival Portugal 21-1-04. Post office believed to be in market but no proof. NEW LATEST DATE for this postmark.

FINLAND

Foreign Postcard 20 pa



Jerusalem (S-28/07; S-PM 10) Message dated July 8, 1902; transit—TE-EGYPT 1902; arrival Helsinki July 21, 1902. Cachet GRAND NEW HOTEL JERUSALEM-A&J MORCOS

TURKISH ADMINISTRATION

Foreign Postcard 20 pa

JAFFA

May 27, 1914

RARE DESTINATION- EASTERN EUROPE

ROMANIA



Postcard cancelled Jaffa 5 (S 22/17, C PM 20), written in Romanian to Constatza, Romania. Port Said transit May 28, 1914

Name of expeditor in Jaffa written on left hand side of front

Dated Petah Tiqva 5-20, 1914 on reverse, obviously a week's delay to Jaffa.

TURKISH ADMINISTRATION

UNUSUAL DESTINATION-EUROPE

Foreign Postcards 20 pa

REHOVOT TO RUSSIA

RARE DESTINATION-WEST UKRANIAN JEWISH TOWN OF DERAZHNA



S-45/01

C-PM1

RARE



Rehovot May 25, 1914 with arrival postmark Derazhnia May (16 ?), 1914
Population 1897, 6118; Jewish, 5230

ENGLAND



"Good Samaritan's Inn" view card. Message dated March 2-05
PM Bon Samaritan (S-13/01) March 2, 1905; transit Jerusalem (S-28/08) March 6, 1905

TURKISH ADMINISTRATION

Foreign Postcard 20 pa

SAFED

JUNE 20, 1896

TO SAINT PETERSBURG AND RETURNED 5 MONTHS LATER



Postmark S 47/05, C PM 5 with transit Constantinople Galata Depart June 29, 1896; arrival Saint Petersburg July 24, 1896

Reverse: Constantinople Galata November 9, 1896 !!

Apparently returned to English and Hebrew oval hand stamp "Rabbi Israel Beharasch Goldenbaum" superimposed on Russian green postmark

Round green Russian postmark dated July 24, 1896: "Express mail, First Class, Russian Post"

Ink manuscript apparently indicating "not found" and "returned"

Reverse: Profuse message in Hebrew filling entire card

TURKISH ADMINISTRATION

Foreign Postcards 20 pa

BON SAMARITAN February 16, 1903

UNUSUAL DESTINATION-EUROPE-IRELAND



Postcard from Bon Samaritan to Limawady, Ireland with arrival pm February 27, 1903
Postcard "JEWS WAILING PLACE"

HAIFA --March 11, 1901

NAZARETH SOUVENIR POSTCARD POSTED IN HAIFA TO ENGLAND VIA ALEXANDRIA 3-14-01



Haifa via Jaffa and Alexandria to England

TURKISH ADMINISTRATION

Foreign Postcard 10 pa

TIBERIAS

APRIL 29, 1909

RARE DESTINATION-AFRICA

BRITISH CENTRAL AFRICA



Postcard 20 pa



HAIFA

BECHUANA LAND

TOP: PRINTED MATTER RATE for foreign postcard 5 words or less

Postmarks: Tiberias 29-4 (1) 904 (S 50/03; C-PM 4); PORT-SAID 4-5-04; ADEN May 11-04; CHINDE B.C.A. JU 4-04; arrival: BLANTY JU-11-04

Picture postcard: "Lake Tiberias" dated April 25-1904

BCA -1907 Nyasaland Protectorate-1953 Federation of Rhodesia and Nyasaland-1964 Malawi

BOTTOM: Postmarks: Haifa (S-10/ 04); message dated April 22 to Bualuwayo, Matabeleland with arrival postmark May-27- 99

Readdressed to Mochudi departing next day. Postmark Bualuwayo May 28-99

TURKISH ADMINISTRATION

Postcard 20 pa

HAIFA

UNUSUAL DESTINATIONS -AFRICA
NATAL

VERY UNUSUAL ROUTING: HAIFA-PORT SAID-LONDON-NATAL



UNLISTED HOTEL
CACHET



JERUSALEM

TOP: HAIFA P.O. March 20, 1904 (Message dated NAZARETH March 18, 1904); transit Port Said 22-III-04;
London MA- 29-04; arrival: Modi River, NATAL AP- 22-1904 (reverse). Elapsed time: 31 days

BOTTOM: JERUSALEM Nov 14, 1902 (5-28/07; C-PM) to Newcastle arrival Dec 26, 1902 (reverse)
Message requests English and German newspapers

TURKISH ADMINISTRAT

Foreign Postcard 10 pa

UNUSUAL DESTINATIONS

AFRICA—"CAPE COLONY"

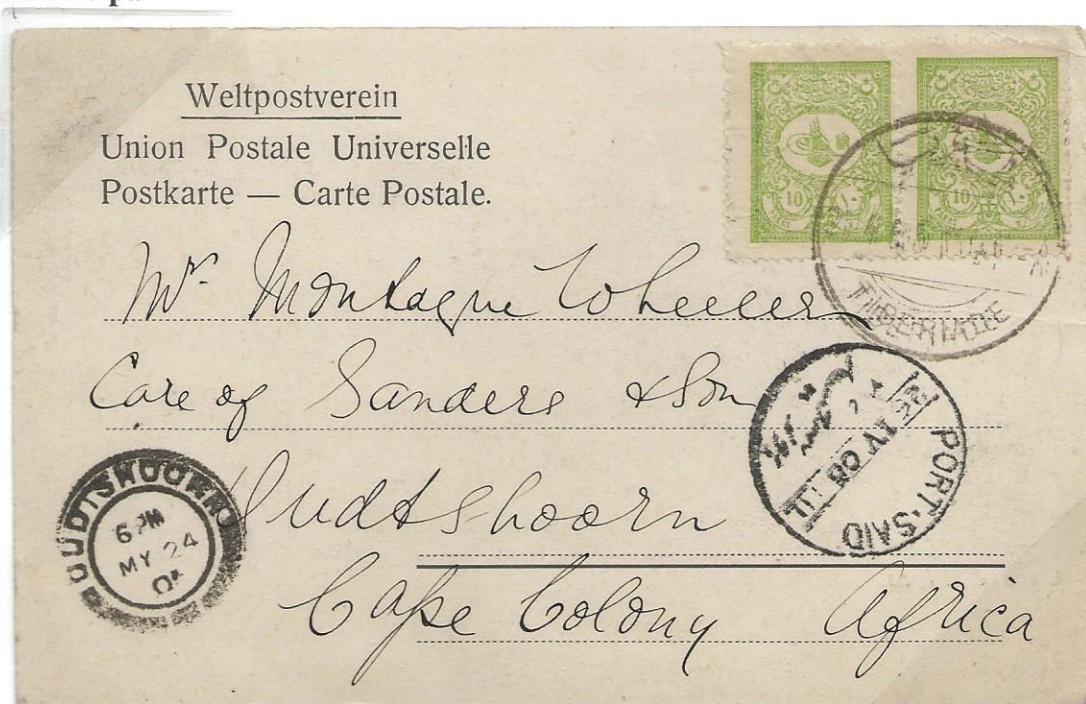


Postmark: Nazareth May 17, 1904 to Idutywa; arrival June 25, 1904

Postmark with view of Nazareth and women of Nazareth

Elapsed time: 39 days

Foreign Postcard 20 pa



Picture postcard dated TIBERIAS April 21, 1905 with view Cana Galilea

Postmarks: Tiberiade, transit Port Said 26 IV 05; arrival Qudiskhoorn May 24, 05.

Elapsed time : 33 days

TURKISH ADMINISTRATION

Foreign Postcard 20 pa

JERUSALEM

UNUSUAL DESTINATION-ASIA

INDIA



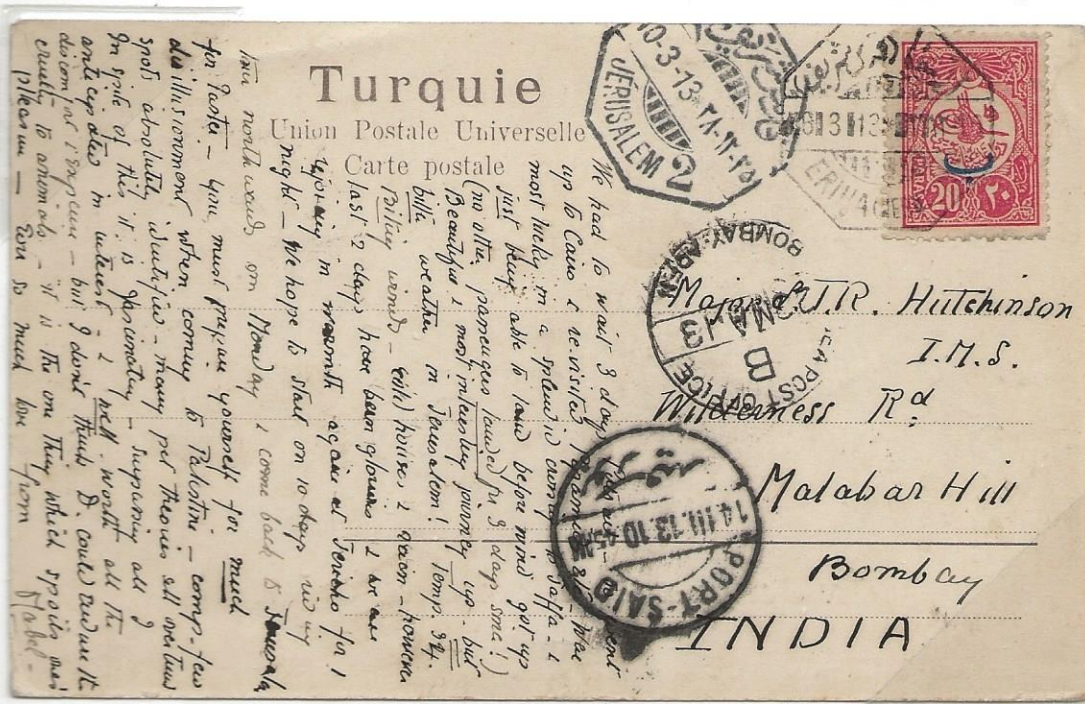
S-28/05

C-PM 8



EARLIER DATE THAN STEICHELE OR COLLINS AND ALREADY SHOWING DEFORMED RING

Message Jerusalem CASA NOVA dated March 13, 1892; PM March 14-; transit PORT SAID March 16, 1892
Arrival HOSHANGABAD March 28, 1892-reverse: SEE POST OFFICE March 22, 1892



S27/03

C-PM 3

Jericho to Bombay, PM ERIHA (JERUSALEM) 6-3-13, IN BLACK, RARE, transit Jerusalem March 10, 1913
Arrival SEA POST OFFICE B BOMBAY-ADEN May 23, 1913

TURKISH ADMINISTRATION

Foreign Letter 1 pi

SAFED

APRIL 5, 1896

UNUSUAL DESTINATION—ASIA

"EAST INDIES"

ADDRESSED TO MADRAS (INDIA)



Postmark S 47/04 C PM 4; transit (reverse) Port Said April 15, 1896, and Seapost office B April 28, 1896

TURKISH ADMINISTRATION

Foreign Postcard 10 pa

JERUSALEM -May 20, 1907

UNUSUAL DESTINATION-ASIA

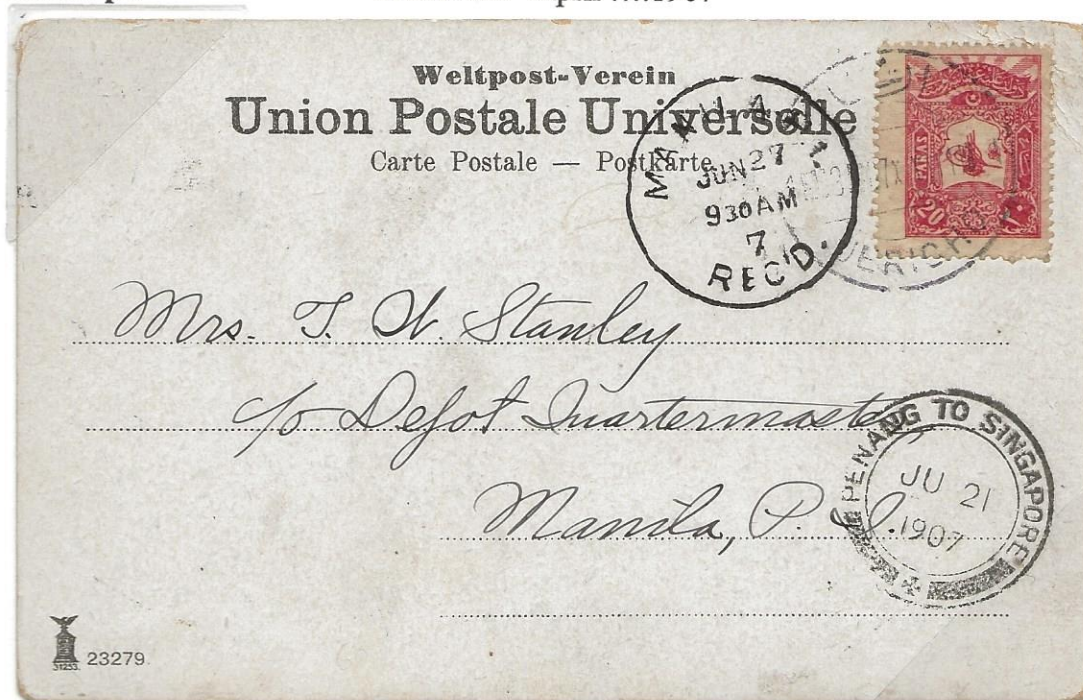
MANILA, PHILIPPINE ISLANDS



Postmark (S 28/07), addressed care of American Commission Manila; arrival postmark Manila July 12, 1907

Foreign Postcard 20 pa

JERICHO April1907



Jericho PM (S27/02), via Penang to Singapore, June 21, 1907; arrival Manila June 27, 1907
Picture Postcard Convent de St. Georges dated 4/27/07

TURKISH ADMINISTRATION

JERUSALEM

Foreign Postcards 20 pa

UNUSUAL DESTINATION-ASIA

PHILIPPINE ISLANDS

MANILA



Jerusalem (S-28/15) April? 1912; transit Port Said April 16, 1912; Singapore May 3, 1912

Message dated 4-14-12. "Had small pox on board. Thought they would be detained at Port Said but continued "

LEYTE



Reduced 50%



Sent from Hotel Bellevue with cachet on reverse

PM Jericho-3-907; transit Suez June 14, 1907; Yokohama June 15, 1907 WRONG DATE !; Manila July 12, 1907; Ta-Leyte J-15. 1907 (reverse); arrival Malitbog rec'd July 18, 1907

TURKISH ADMINISTRATION

JERUSALEM

Foreign postcards 20 pa

DECEMBER 26, 1896

UNUSUAL DESTINATION - ASIA

JAPAN

ONLY ITEM OF 19TH CENTURY CORRESPONDENCE FROM HOLYLAND TO JAPAN KNOWN



Message dated "Bethlehem Judea Christmas 1896" Jerusalem to Tokyo

Postmarks: Jerusalem (S-28/05) December 26-96; transit Port Said 30 XII 96; Colombo Ja 9, 97

Reverse: Singapore (illegible); Tokyo Japanese

BETHLEHEM January 9, 1910



Bethlehem Dec 24-9; transit Port Said 1-9-10; Port-Taufiq 1-9-10; Kobe 12-2-10; Osaka 12-2-10

TURKISH ADMINISTRATION

JERUSALEM

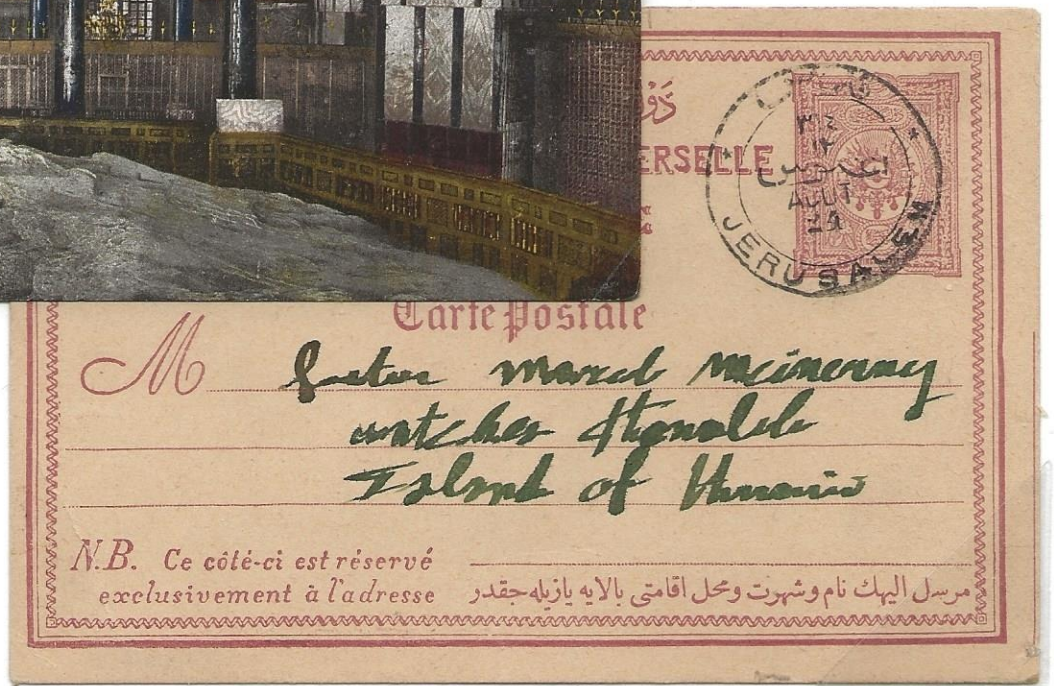
Foreign Postcard 10 pa

RARE DESTINATION

HAWAII



Foreign Postcard 20 pa
Year absent



TOP



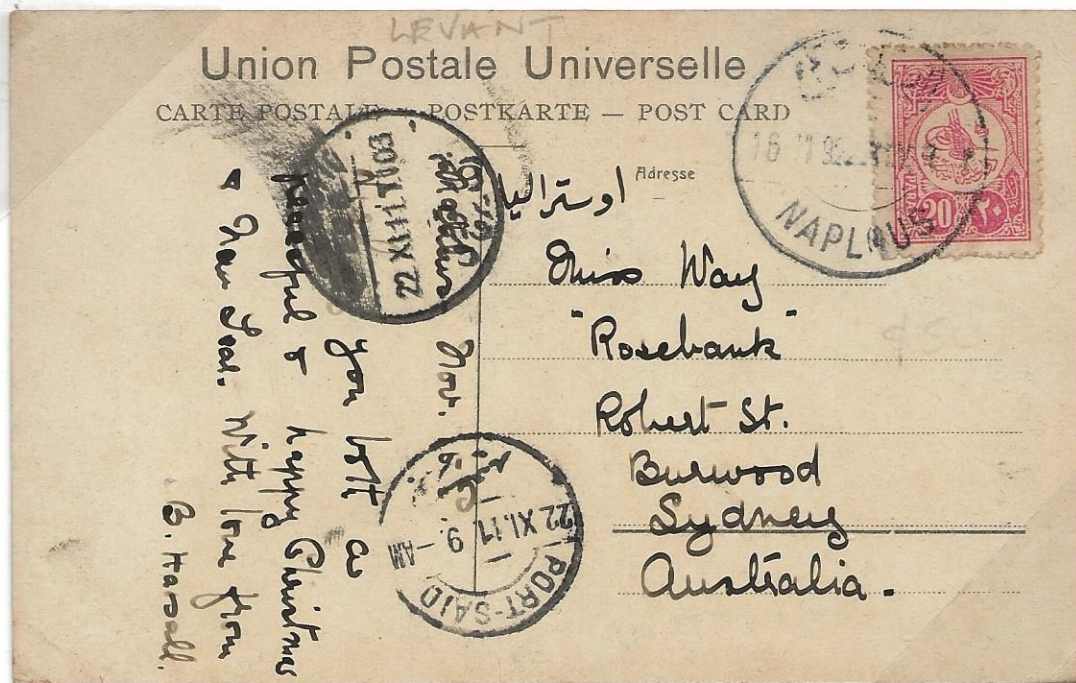
Jerusalem (S-28/13)...-....1910; unusual forwarding agent
Austrian- Hungarian Consulate

BOTTOM: Jerusalem OCT 24-year absent: PM similar to (S-28/05. C-PM 8) but has perfect outer ring
Unknown per Collins as such. Message dated Dec 1892

TURKISH ADMINISTRATION

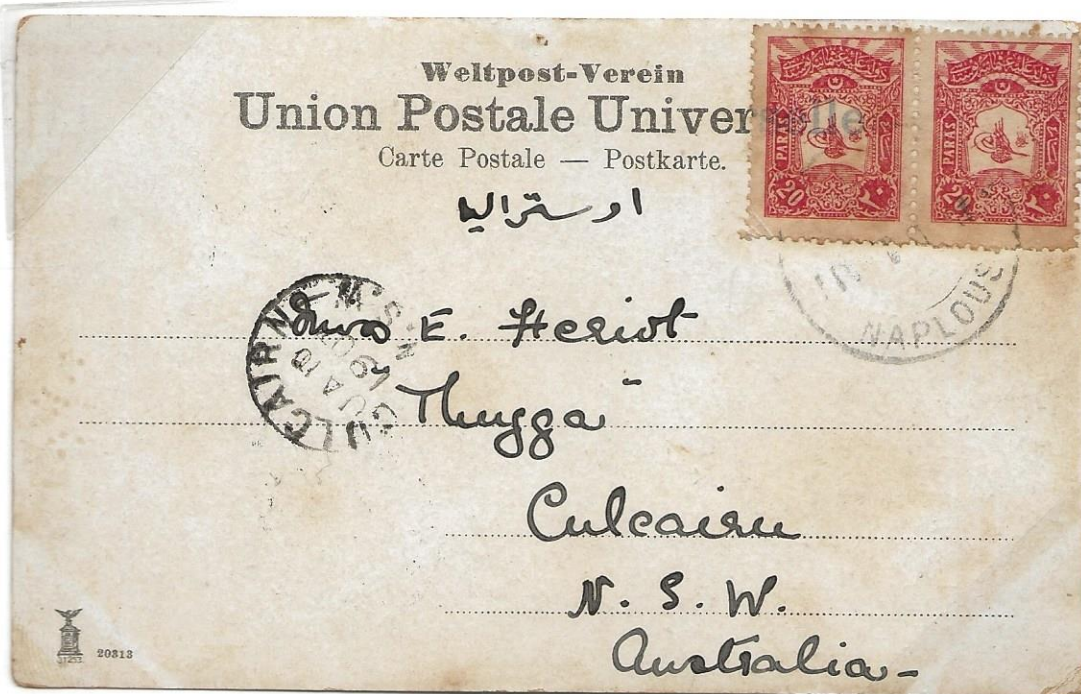
Foreign Postcard 20 pa

NABLUS
UNUSUAL DESTINATIONS -ASIA-AUSTRALIA



Postmarked Nov 16, 1903 via Port Said and? ; Nov 22, 19 (03) to Sidney

Foreign Postcard 1 pi



NABLUS to Culcairn, New South Wales, Australia

Message dated Dec. 5, 1906 Postmarks: Nablous Dec. 5, 1906; arrival Culcairn Jan. 10, 1907 NSW

Rate 1 pi despite a picture postcard because message is more than 5 words and foreign destination

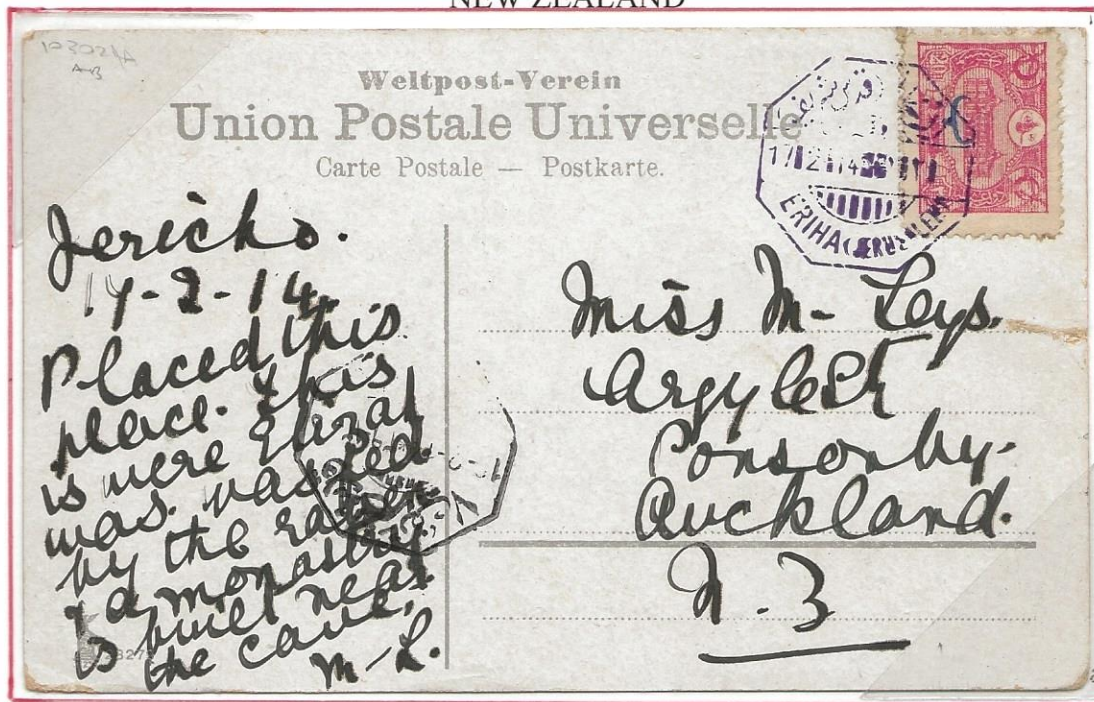
TURKISH ADMINISTRATION

Foreign Postcard 20 pa

JERICHO

RARE DESTINATION - ASIA

NEW ZEALAND



Jericho (S 27/08; C PM 3) Feb17, 1914; transit Jerusalem 7 (S 28/23; C PM 27) Feb 18, 1914; arrival (reverse) March 23-4

COLORED VIEW CARD OF JERICHO TO U. S. VIA JERUSALEM



Message dated May 5, 1912. Jerusalem transit May 7, 1912

TURKISH ADMINISTRATION

Foreign Postcard 10 pa

JERICO

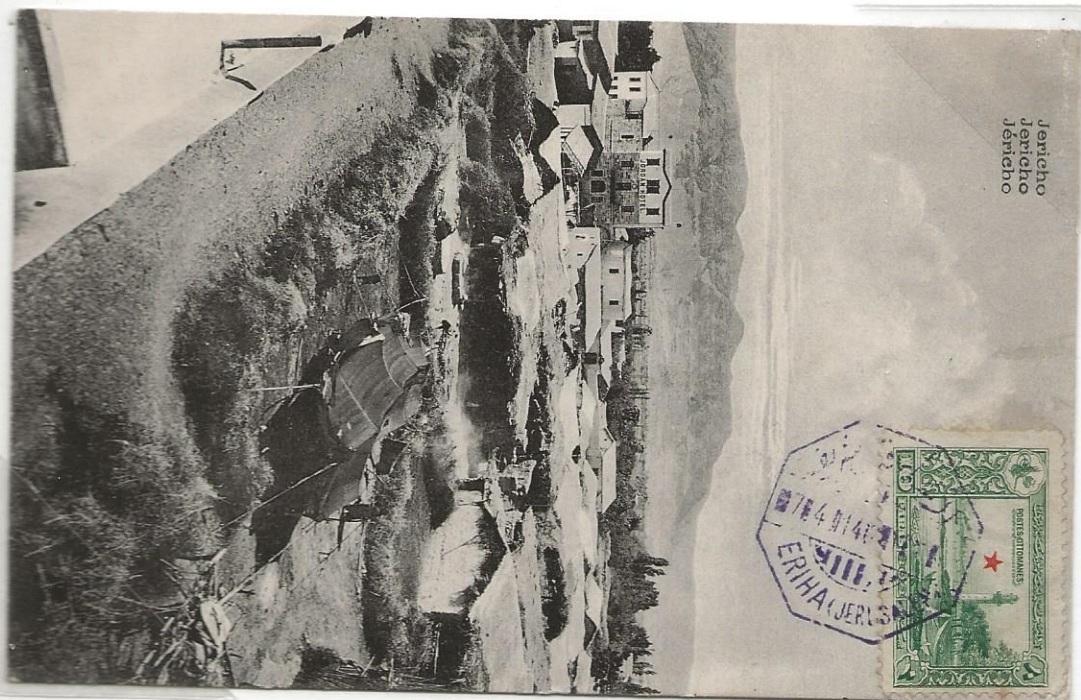
September 12, 1912

EARLIEST DATE KNOWN FOR THIS POSTMARK



Two U.S.; transit Jerusalem (S 28/15); rerouted
10 pa printed matter rate as message less than 5 words. Hand stamped "Directory Address"

April 7, 1911



Violet PM on picture side of Jericho view card to Paris with Jerusalem 6 transit PM April 8, 1914 (reverse)

TURKISH ADMINISTRATION

Foreign Postcard 20 pa

NAZARETH

APRIL 25, 1914

UNUSUAL DESTINATION - NORTH AMERICA

CANADA



COLORED POSTCARD: THE HOLY FAMILY (German, French, English, Russian)

Message dated April 30, 1914; postmark S 41/05, C PM 5, dated 25-9-? probably error, blue; transit Port Said May 5, 1914; arrival Dundas, Ontario May 21, 1914

TURKISH ADMINISTRATION

Foreign Postcard 20 pa

JERUSALEM

1899

RARE DESTINATION-HISPANOLA

HAITI



S 28/06

C PM 7



Jerusalem P.O. ineligible –via Constantinople Le Galata * depart * 1898; reverse: arrival9 pm
To individual who has researched derivation of Hebrew word for “Rabbi”

Exhibitor is aware of ONLY 1 OTHER EXAMPLE TO THIS DESTINATION

Reverse: various scenes of Palestine with printed message in German

TURKISH ADMINISTRATION

Foreign Letter 1 pi

BETHLEHEM

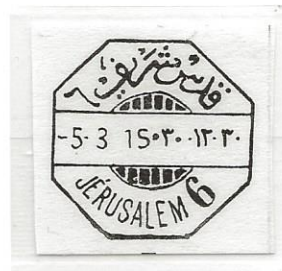
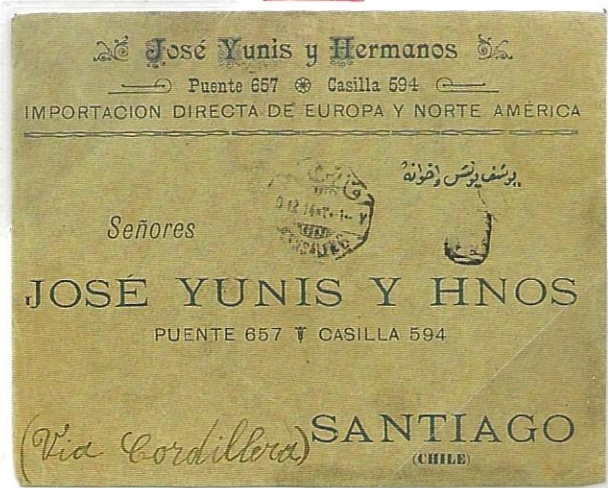
Nov. 20, 1914

RARE DESTINATION - SOUTH AMERICA

CHILE



S 08/03
C PM 2



S 28/22
C PM 26



Postmarks: Bethlehem Nov 20, 1914; arrival - recepcion 16.Feb.15

Reverse: transit Jerusalem 6 ? 0-12-14; censor mark C CM 1 (Jerusalem)

"Via Cordillera"

TURKISH ADMINISTRATION

Foreign Postcard 20 pa

JERUSALEM

September 10, 1901

RARE DESTINATION-CENTRAL AMERICA

COSTA RICA



4 covers to this destination known by exhibitor; 3rd one by Russian post in this exhibit

TOP: Jerusalem (S-28/07); transit ...OC 5, 1901 (incomplete) (reverse); Acapulco 11 Oct 1901;
San Jose, Costa Rica Oct 31, 1901

Message dated "9-1 Jerusalem" Missionary correspondence in German

BOTTOM: Jerusalem (S-28/22, C-PM 19); arrival SAN JOSE, COSTA RICA May 12, 1914 (violet)

Message in French APRIL 12, 1914

TURKISH ADMINISTRATION

JERUSALEM

Foreign Letter 1 pi

JERUSALEM BRANCH POST OFFICES

CAMP IMPERIAL--JERUSALEM

Location in the vicinity of the German School (near what is now the Road of the Prophets)



Addressed to Berlin but without the usual Jerusalem Postmark. Reverse: Arrival pm Nov, 17, 1898
Temporary Branch Post Office for use of the Kaiser and his staff during his visit between Oct 29 and Nov 2nd.
Unusual to see this cachet on a cover, as about 90% are on souvenir postcards, also mostly to Germany

MEO CHAREM

Location on Mea- She'arim Street, near the Hungarian Houses

Foreign Postcard 20 pa



Jerusalem Oct 8, 1915 to Switzerland, arrival Dec 9, 1915. Jerusalem Military Censor; Feldkirch cachet x 2.

TURKISH ADMINISTRATION

JERUSALEM BRANCH POST OFFICES

QUART ISRAELITE



S 33/01 CPM 2

Cover with variety of first form of postmarks for this branch office



Violet postmark without date with Hebrew year date "1313" (1895) in lower segment

Cover addressed to Germany

Adhesive: 10 pa indicating printed matter rate

With this variety the upright arm of the Lamed in the Hebrew "Israel" is shorter than in the first type of postmark as listed by Steichele. This is described by Collins who lists it as a specific postmark

TURKISH ADMINISTRATION

JERUSALEM BRANCH POST OFFICES

QUART ISRAELITE

Located in Old City

Domestic Letter 10 pa



S 33/05
C PM 6



Foreign Postcard 20 pa

Top: "Schnorer" (charity request) mail to Germany pm August 30, 1901

Bottom: Postcard to Vienna with message dated April 6, 1916 (reverse) Jerusalem pm dated April 5, 1916 !! (C PM 7) with Beirut transit April 13, 1916 (on reverse). Cachet Military Censor

TURKISH ADMINISTRATION

Foreign Postcard 10 pa

JERUSALEM BRANCH POST OFFICE

QUART ISRAELITE



S 33/02; C PM 3

COVER TO GERMANY WITH VARIETY OF THIRD FORM OF POSTMARK FOR THIS BRANCH OFFICE



Violet postmark without date with diameter 26 mm.

Arabic writing is also slightly different shape than first type

With this variety, the upright arm of the Lamed in the Hebrew "Israel" is longer than in the second type as listed by Steichele and Collins

In use between 1901 and 1907

TURKISH ADMINISTRATION

Registered Foreign Mail 2 pi

JERUSALEM BRANCH POSTOFFICES

QUARTE ISRAELITE

Located in Old City

Registration Type RC 9 (C) –Only TWO RECORDED per Collins-This is the THIRD known



Postmark Jan 25, 1916

Reverse: Postmarks Beyrouth; arrival Sulz 1-3-1916

Turkish-Jerusalem Military Censor CMS (C)

German Censor Marks Munchen (x 2) on attached German Censor Label stamped 29 Feb 1916

Sent by KAROLINE DREYFUS, Jerusalem !!

TURKISH ADMINISTRATION

Registered Foreign Letter 2 p1

JERUSALEM BRANCH POST OFFICE

MEO CHARIM

June 19, 1916

Located in Mea-She'chm street near the Hungarian House

HEBREW FRENCH REGISTRATION LABEL (C RL12) MANUSCRIPT 5540 (PURPLE)



NEW LATEST DATE FOR THIS REGISTRATION LABEL

Meo Charem (C PM 1); Beyrouth transit July 6, 1916; arrival: Frankfurt July 25, 1916

Reverse: Two different censor marks

Collins states five covers listed with this registration label in Meo Charem

TURKISH ADMINISTRATION

Registered Foreign Letter, double weight 3 pi
+ war tax 20 pa

JERUSALEM BRANCH POST OFFICES

MEO-CHAREM

Located on Mea-She'arim Street near the Hungarian House



S 32/01

C PM 1

6 COVERS RECORDED WITH THIS REGISTRATION MARK FROM MEO-CHAREM.



Registered cover to Frankfort, Germany with postmark dated December 13, 1916

Reverse: Beirut, Dec 21, 1916; STEAM BOAT Jan 5 and Jan 6 1917; arrival Frankfort Jan 10, 1917

Rate: Foreign letter 1 pi +double weight 1 pi + registration 1 pi +war tax registered 20 pa=3pi, 20 pa

Two different Turkish censor marks; reverse: red censor label

TURKISH ADMINISTRATION

Registered Foreign Letter 4 pi 20 pa
Multiple Weight

JERUSALEM

July 15, 1912

MEO-CHAREM REGISTERED COVER TO CONSTANTINOPLE FROM COMMERCIAL BANK



Front
Reduced 50%

RARE PIECE

Postmarks: Jerusalem 3 (S 28/19, CPM 13), Rare; Stamboul Arrivee 28-7-913
Boxed "R" of Meo Charim (S 23/02, C RC 4) No 1106. SIX covers recorded with this mark from here.
Franking: 2 pairs 1 pi and a 20 pa.
Distribution mark "25" and RECOMMANDEE (violet) on front

C

TURKISH ADMINISTRATION

JERUSALEM BRANCH POST OFFICES

Domestic Postcard 20 pa

GARE—Location in the vicinity of the railway station

Cachet
PAUL BREISCH JAFFA
Forwarding agent

Reverse:
Name struck
Deep violet



Originating in Jaffa. Jerusalem January 30, 1910 to Chulda. Reverse: message in German

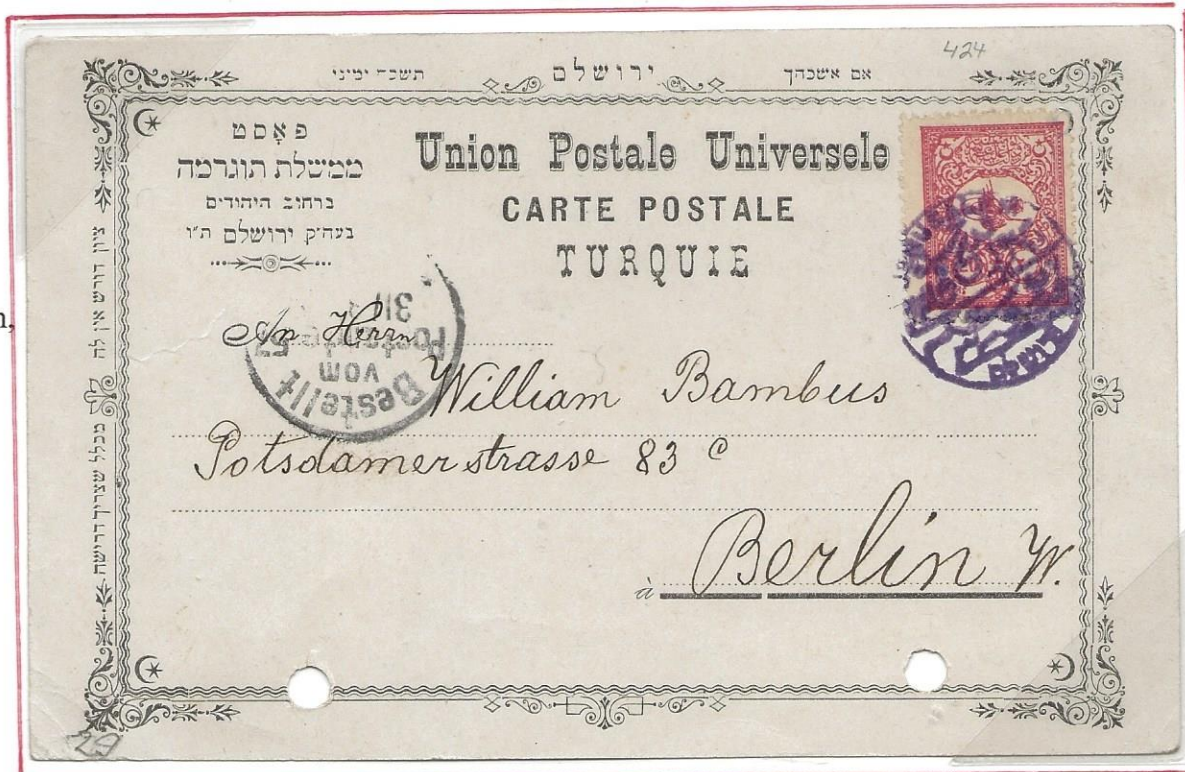
QUART ISRAELITE Located in Old City believed opposite the HURVA Synagogue

HISTORICAL

TEXT WRITTEN IN HEBREW BY ELIJAHU HONIG POSTMASTER

Foreign Postcard 20 pa

Imprint (left upper corner)
"Post of the
Turkish Government,
Jew Street in Jerusalem,
Old City"



Message dated in Hebrew. Arrival postmark ?-31-?

Branch opened Oct 1, 1895 with HONIG who continued with some interruptions, until Dec. 1917 when the country was occupied by British troops and he left his post; completely reorganized Turkish postal service in Jerusalem

TURKISH ADMINISTRATION

JAFFA BRANCH POST OFFICES

Foreign Postcard 20 pa

JAFFA PORT Oct 29, 1898



Jaffa to Vienna. Postmarks: Jaffa Port; transit Alexandria 2 XI 98; Port Said XI 98; arrival Vienna Nov 9, 1898
Office was in customs office building near harbor
Postmark: "JAFFA LANDING STAGE BRANCH POST OFFICE 1895"

JAFFA SHUK (MARKET) 1900

THIS OBLITERATOR KNOWN AS "JAFFA SHUK" POSTMARK, BUT NO PROOF OF BRANCH IN THAT LOCATION



Posted to Germany with arrival postmark of Zerbst Dec 20, 1900

TURKISH ADMINISTRATION

HAIFA BRANCH POST OFFICE 1897

Foreign Postcard 20 pa

12 ENTIRE ITEMS RECORDED FROM BRANCH OFFICE



S 19/02
C PM 3

Haifa to Berlin via Alexandria. Message dated June 26, 1897

Postmarks: Haifa Branch Office (violet); transit Alexandria 29 VI 97; arrival Berlin Besteltz 7/7.97

MERDJAOUN Oct 1900

PROBABLY FROM A METULLA COLONY SETTLER, CARRIED (FOLDED), TO MERDJAUN



S 39/01
C PM 1

Message in Hebrew (Yidish?) to Egypt, written Oct 1900

Postmark: Merdjaoun; transit Port Said 31 X 00 T

Mail from Metulla was often posted in Al Diedeida, the chief town of the Kada Merdjaoun

S

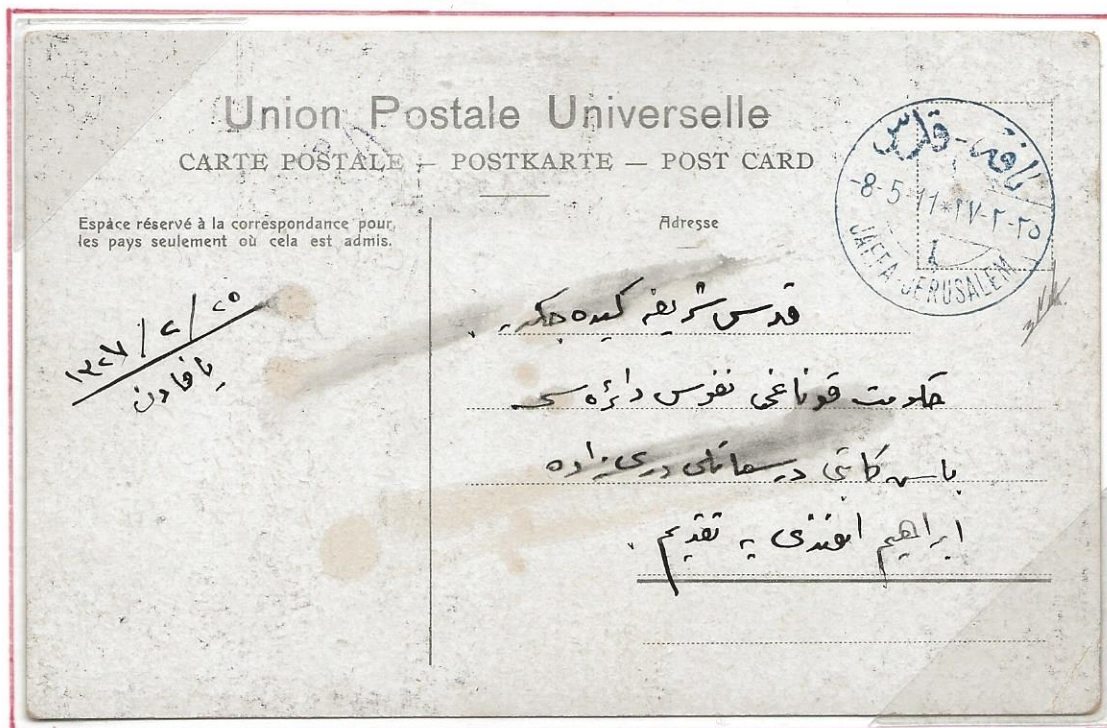
TURKISH ADMINISTRATION

POSTMARK OF THE RAILWAYS

Domestic Postcard 10 pa

JAFFA-JERUSALEM

May 8, 1911 in BLUE EARLIEST DATE KNOWN



POSTMARK 3 MONTHS EARLIER THAN STEICHELE

Reverse: Franked 10 pa Addressed to writer's brother at other end of railroad line

ONLY 4 IN BLUE RECORDED all from the same correspondence

S

"JEROUSALEM" August 21, 1908

MISSPELLING OF JERUSALEM



View card addressed to Jaffa

S

TURKISH ADMINISTRATION

POSTCARDS OF THE RAILWAYS

Local Postcard 5 pa

JAFFA-JERUSALEM
"JERUSALEM" January 27, 1908
MISSPELLING OF JERUSALEM



View card addressed to Jaffa. Postmark in reddish violet

October 15, 1907
 BELFAST, IRELAND

Foreign Postcard 10 pa



Hotel cachet and card readdressed

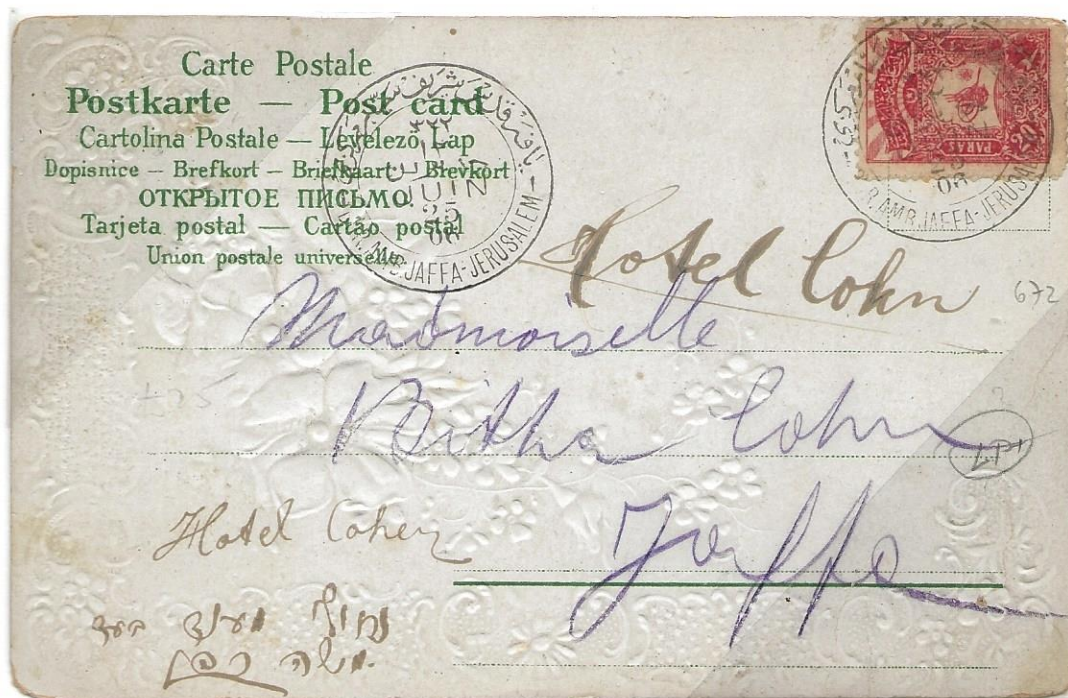
TURKISH ADMINISTRATION

Domestic Postcard 20 pa

THE TRAVELING POSTOFFICES

JAFFA-JERUSALEM

POSTCARD ADDRESSED TO JAFFA WITH MESSAGE IN YIDISH



The 87 kilometer route was opened Sept 26, 1892 in order to speed up the dispatch of mail. In 1888, a private person, Joseph Navon, received a concession to run the railway for 70 years. Later, he sold it to a French combine.

Two trains ran in either direction twice daily taking 3 ½ hours in each direction.

Mail handed in late could be handled enroute. Special postmarks were used. There is some question whether the postmarks were stamped on the train or in Jaffa, with mail sorted on the train.

This item is postmarked Jaffa - Jerusalem x 2 June 25, 1906 (R P No.5 C -S) despite going from Jerusalem to Jaffa.

TURKISH ADMINISTRATION

Domestic Registered Letter
Plus 1 p i Insurance ?

JAFFA

January 1, 1896

Registration Mark (C RC 1) is the **SIXTH EXAMPLE** known-five per Collins



Reduced (70%)

769

Registered No. 3691 (manuscript) mark inscribed "287" = 1287 (Turkish Civil Calendar = 1871)

Addressed to Hadji Effendi, on ? street of Bukhara, House No.3, Istanbul

Postage: 1 pi domestic letter + 1 pi registration + 1 pi insurance? No.769

Reverse : see above; note no receiving mark Istanbul

TURKISH ADMINISTRATION

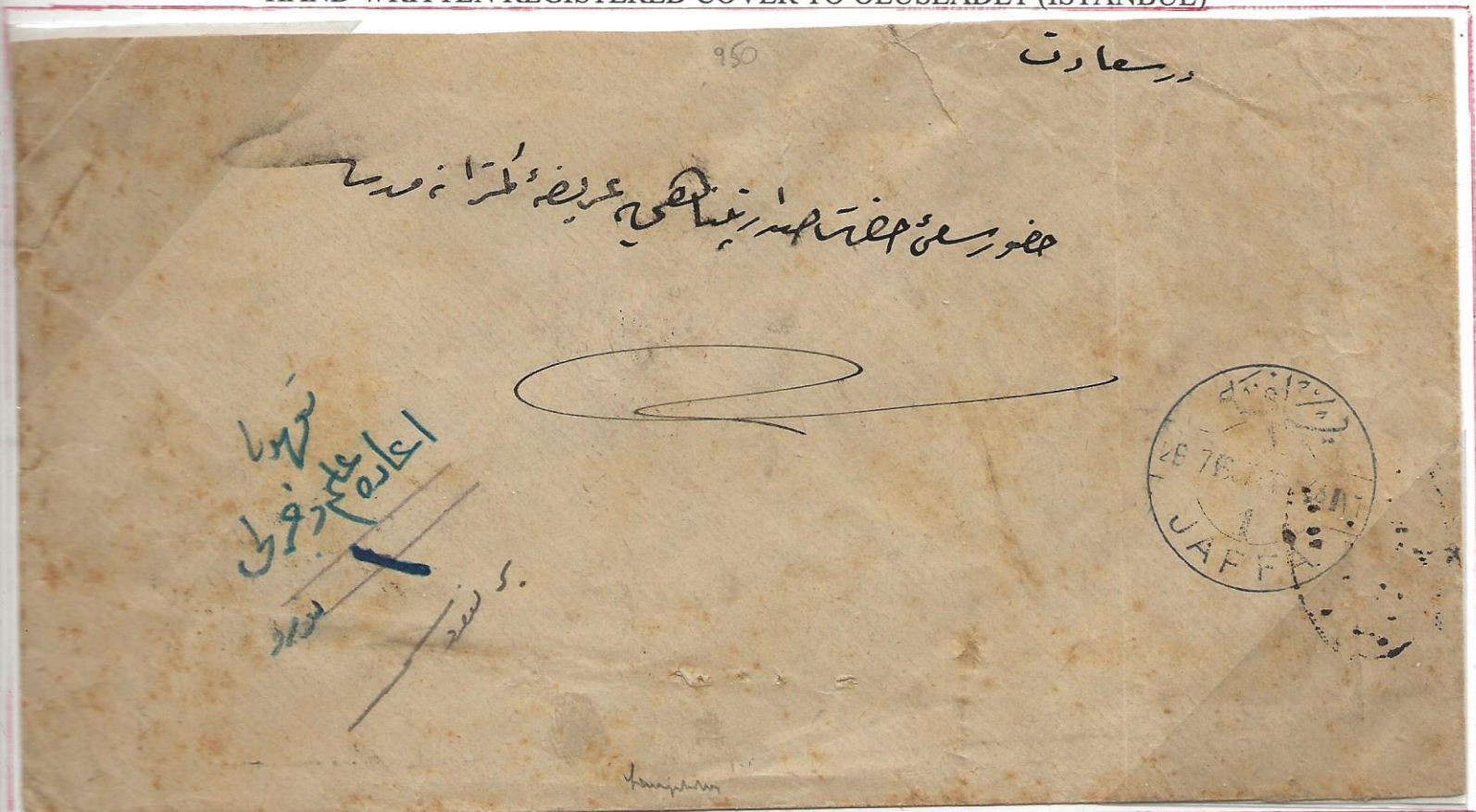
**Registered Domestic Letter 2 pi
+ war tax 20 pa**

JAFFA

July 25, 1907



HAND WRITTEN REGISTERED COVER TO OEUSEADET (ISTANBUL)



Jaffa (S 22/11; C PM 14); reverse transit Yenidjami with Arabic date

TURKISH ADMINISTRATION

**Domestic Letter 6 pi 20 pa
Philatelic Rate**

JAFFA

FIRST DAY JAFFA 7 POSTMARK



ADDRESSED TO BEIRUT

Franked with overprinted various issues of 1909 for Jaffa local use with a total of 5 ½ (3) pi and 40 pa (4)

Overprinted for accession of Mohammad V, issued April 1, 1909

“SULTAN MOHAMMED HAMESH 10 NISSAN 1325”

Arrival: postmark Beyruth May 10, 1909 ; reverse: Jaffa 7 and Beyruth, each repeated

Cachet: Boxed RECOMMANDEE---FOUR COVERS RECORDED with this marking

TURKISH ADMINISTRATION

Domestic Registered Letter 2 pi, 20 pa
+ extra weight

JERUSALEM

DEC. 28, 1910

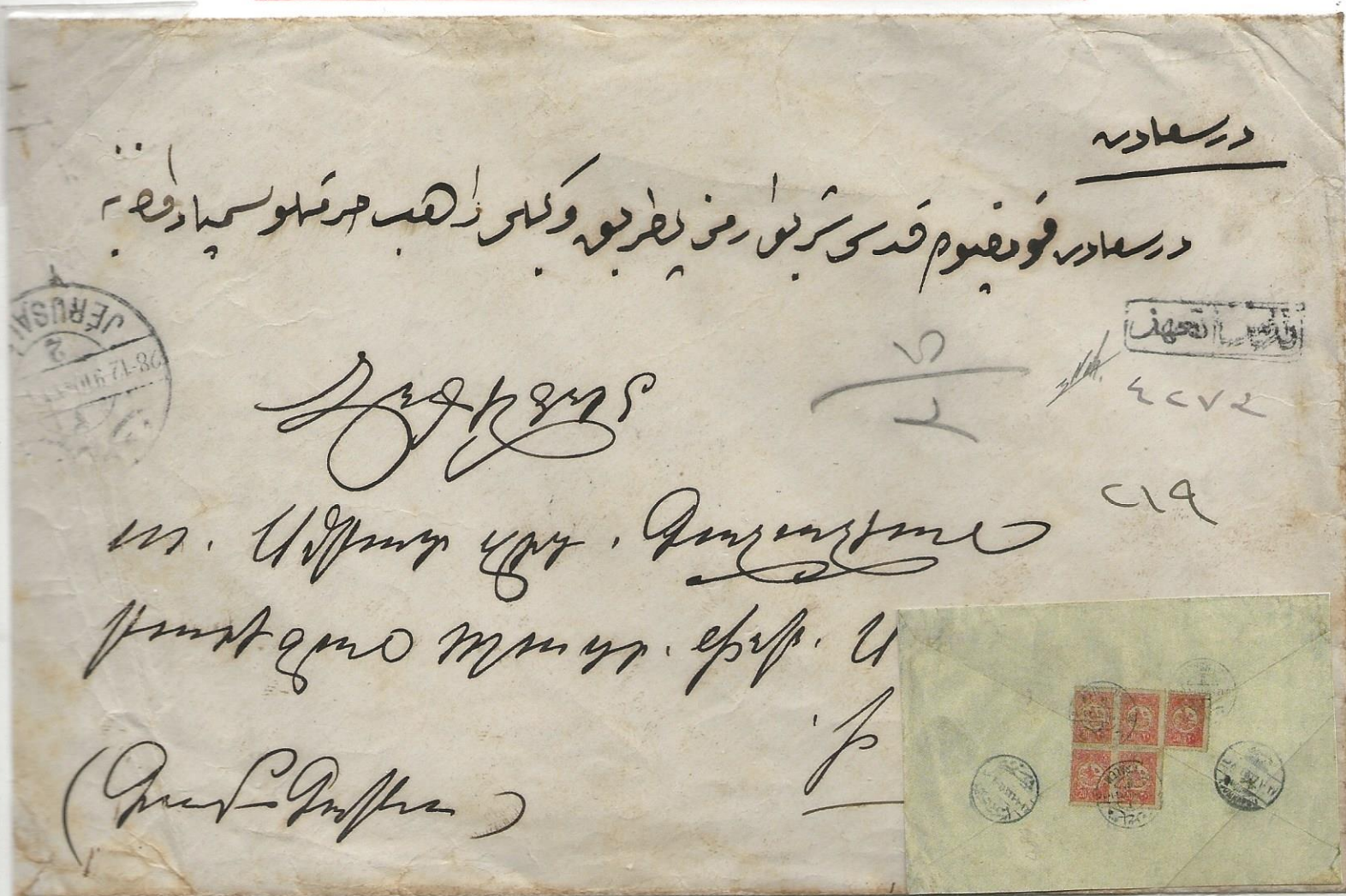


S 28/13
C PM 16



CRC 3

ONLY LOWER PART REGISTRATION MARK USED-5 RECORDED



Upper part registration mark eliminated at beginning of 1900's due to Pan Islamic views

Registration mark: KUDUS-TAAHHUTLU "JERUSALEM REGISTERED"; below- 4273 manuscript Arabic

Postmarks: Jerusalem Dec 28, 1910; reverse: arrival Istanbul 26.10.1326=Jan.1911

Rate: letter 40 pa + registration 40 pa + extra weight 20 pa =100 pa =2pi 20 pa

TURKISH ADMINISTRATION

**Domestic Registered Letter 2 p1
+war tax 20 pa**

NAZARETH

April 1917-1918

SCARCE REGISTERED LETTER TO HAIFA



Very Scarce Nazareth all Arabic postmark—NOT LISTED in Steichele or Collins

Registration cachet (S 41/09; C RC 3)- only known used 1917-1918

Collins states this cachet recorded on only THREE covers

Receiving postmark Haifa illegible

TURKISH ADMINISTRATION

MEDJDIL

Domestic Registered Letter 1 pi

Oct 10, 1907

ONLY 2 COVERS RECORDED WITH THIS POSTMARK—THESE ARE 3 AND 4



Foreign Letter 1 pi

Top: Domestic cover to German bank in Jaffa

Bottom: To famous EGGER family in Munchen, Germany, one of richest merchants in the Holyland Only 8 items recorded with this postmark, most to EGGER. However, since Collins claims only 2 covers known, and illustrates a cover with blue postmark as the only one (the other in black), these would be the second and third with a blue postmark, and thus, increases the total items to ten.

Arrival postmark: Munchen OKT 07: only 3 arrival marks recorded

TURKISH ADMINISTRATION

Registered Foreign Letter 2 pi

JAFFA

SEPT 20, 1914



S 22/17
C PM 20

FROM SARONA VIA JAFFA TO CAIRO



Mailed shortly after start of World War I

TURKISH ADMINISTRATION

Registered Foreign Letter 2 pi

NABLUS

Date Undeterminable



Registered cover front to Paris with oval postmark (S 40/04, C PM 4) in black. In use 1882-1898.

Neither the registration mark "R" with manuscript 1001, nor the cover used in Nablus are listed by Steichele or Collins among known registered covers.

Reverse has portion of merchants' hand stamps x 2

TURKISH ADMINISTRATION

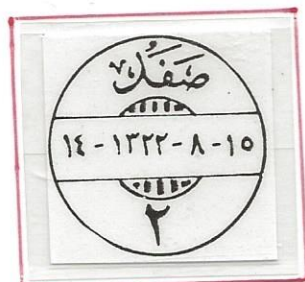
Registered Foreign Letter 2 pi
+ war tax 20 pa

SAFED

June 26, 1917



Reverse: reduced 50%



S 47/08

C PM 9

REGISTERED LETTER TO HUNGARY



Postmarks: Safed 2 rare; registration mark "156" (manuscript) and "No. 29" (manuscript)

Censor Marks: Military censor mark (S41/12; C CM2) (similar to Nazareth); Arabic mark; Budapest mark

Reverse: Safed 2, Beirut 9-7-1917; MIBKOLZ July 31, 1917; ? ?... boul 25-7-17

TURKISH ADMINISTRATION

**Registered Foreign Letter 2 pi
+ war tax**

SAFED

March 1918

REGISTERED DOUBLE CENSORED COVER TO VIENNA, AUSTRIA



Registered letter from "SAFED" reverse address; postmark illegible to Austria

Transit postmark STAMBUL-DEPART March 30, 1918

Manuscript "R" (blue) 289

Austrian boxed red censor mark + 1263

Turkish censor mark

Reverse : censor label of Vienna illustrated above

TURKISH ADMINISTRATION

Registered Foreign Letter 2 pi
+ war tax 20 pa

HAIFA-BEIRUT-VIENNA

MAY 8 (19) 18

Postmarks: Caifa (S 19/09 C PM 11) + registration mark (C RC 1) Military Field Post 1+ 2 censor marks.

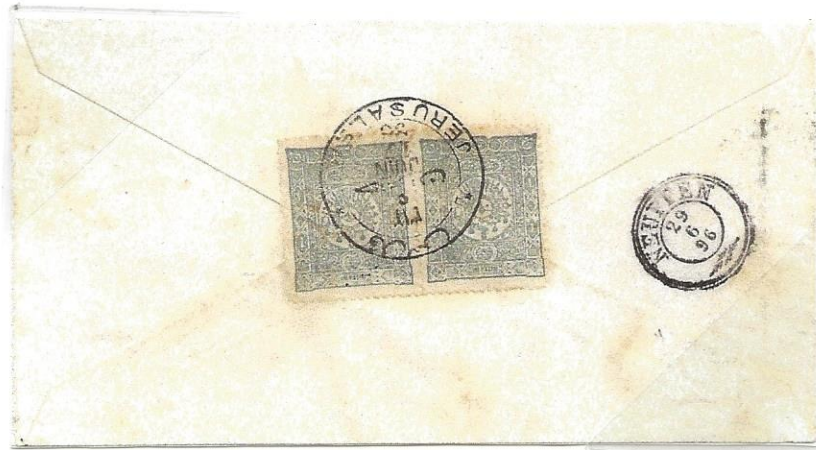


TURKISH ADMINISTRATION

Registered Foreign Letter 2 pi

JERUSALEM

JUNE 17, 1896



VERY SCARCE REGISTERED COVER TO NEUFFEN, GERMANY



Jerusalem PM (S 28/06 C PM 7) with arrival on reverse PM NEUFFEN 29-6-96

Registration Cachet: Jerusalem (S 28/28; C RC 1); No 422

TURKISH ADMINISTRATION

Registered Foreign Letter 3 pi

HAIFA
Feb 4, 1905



S 19/05
C PM 7

DOUBLE RATE REGISTERED TO GERMANY



Haifa to Hamburg, Germany with colorful alternating red and green adhesives

Postmarks: Reverse: transit Port Said Feb 8, 1905; arrival Hamburg ?-1-1905

• Registration label (S-19/13; C RC 1) with manuscript 55

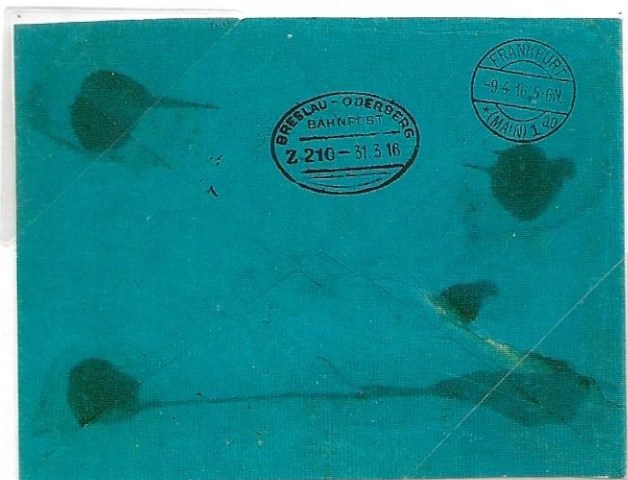
5 unbroken wax seals

TURKISH ADMINISTRATION

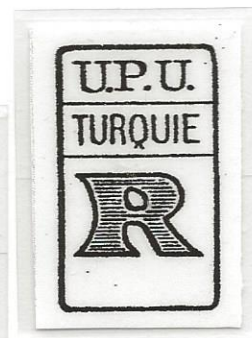
Registered Letter 2 pi

SAFED

March 8, 1916



S 47/06
C PM 6



S 47/09
C RC3

LESS THAN 10 REGISTERED COVERS FROM SAFED



Registered cover from Safed via Beirut to Frankfort, Germany

Postmarks: Safed; transit Jerusalem Military Censor (S-00/14); arrival Frankfort 9.4.16

Registration mark: Safed (R CR 3) "889" (manuscript); German Railroad registration label ,VERY UNUSAL
R label applied at German border-no agent in Beirut

TURKISH ADMINISTRATION

Registered Foreign Letter 2 pi

SAFED

June 1916

HAND REGISTERED No 719

UNLISTED GERMAN REGISTRATION LABEL "Vom Auslande über Bahnpost 5"



Three censor marks: Beurouth censor; Astro-Hungarian Transvaar (boxed censor)

Kziserliche Bahnpost censor No.5-two labels. Hand stamp in German opened by military censor M 3/7/1916
(on reverse)-seldom seen per Tsachor

Cover ex Comitte Amsterdam Safed

Postmarks: SAFED 1 (octagonal) (S 47/07; C PM 7); reverse: BRESLAU-ODERBERG 2.7.16;

Arrival : Frankfurt 8.7.16

Steichele lists only 3 covers with hand registration

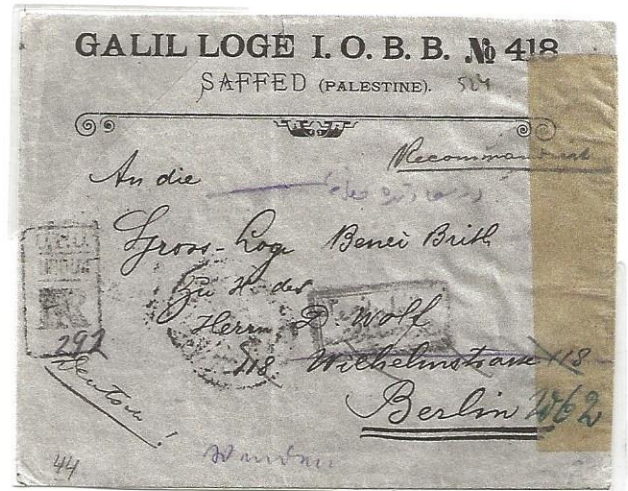
This railroad registration label is not listed in Steichele or Collins

TURKISH ADMINISTRATION

Registered Foreign Letter 2 pi
+war tax 20 pi

SAFED

May 17, 1917



HAND REGISTERED IMPRINTED STATIONARY WITH U.P.U. TURQUE R 292 (S 47/09; C RC 3)



SAFED 2 (S 47/08 all Arabic) to Berlin, Germany
 Stationary of GALIL LOGE I. O. B. B. No. 418 SAFED (PALESTINE)
 ie. International Organ of BNEI BRITH

Multicensored; reverse postmarks: ? Depart V 17,17; arrival Berlin 5 23 17; Red Seal PM dated 5-14-17
 Judaica item; very early in Palestine rural area

TURKISH ADMINISTRATION

Registered Foreign Letter 2 pi
+ war tax 20 pa

HAIFA

June 15, 1917

4 COVERS RECORDED WITH THIS REGISTRATION MARK



Haifa to Germany Registration mark (S 19/14 C RC 3) 6 months later than Collins

Franking: 20 pa x 3 + 10 pa x 4 (reverse) = 2 pi 20 pa

Postmarks: Caiffa 1 (S19/08 C PM 12) 15-6-17;

reverse: Caiffa 1 x 2; Beyrouth 15-6-17; arrival Istanbul-STAMBOUL 1-VII-17

Censor marks: Haifa "PASSED CENSOR HAIFA MILITARY CENSORSHIP COMMITTEE". One additional censor mark. reverse : red censor label

TURKISH ADMINISTRATION

Foreign Registered Letter 2 pi
+ war tax 20 pa

JERUSALEM

Aug 5, 1917



REGISTERED LETTER WITH "GERMAN TYPE" LABEL TO GERMANY – 12 RECORDED



German type registration label (C RL 1) No. 755 –applied by German agent in Istanbul

Postmarks: Jerusalem 2 (S-28/18; C PM 22) 5-8-17

Reverse: transit Istanbul and Turkish t.p.o illegible; arrival Wronke b 1-9-17

Two different Turkish censor cachets; red censor label on reverse-Istanbul

Rate: 2 pi foreign registration + 20 pa war tax =2 pi. 20 pa

TURKISH ADMINISTRATION

**Registered Foreign Letter 2 pi
+2 pa war tax**

JERUSALEM

March 11 , 1906



HAND REGISTERED No, 52 to Lucerne, Switzerland



COLORFUL 3 COLORS COVER

Postmarks: Jerusalem (S 28/10; C PM 1); transit Italian Naples (?) 2-16-06; arrival Luzeren III, 18.06

TURKISH ADMINISTRATION

Registered Foreign Letter 2 pi

SAFED

June 15, 1908



S 47/09
C R C 3



S 47/05
C PM 5

REGISTERED COVER TO LONDON



Letter sent by Chief Rabbi Rafael Silberman

Postmarks : Reverse: Safed arrival registered London E C 2 JU. 08, wax seal intact

Registration mark with "2006" (manuscript) , both blue, not common

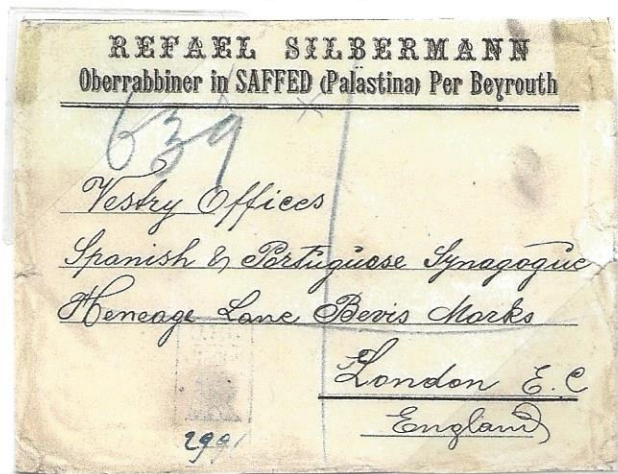
S

TURKISH ADMINISTRATION

Registered Foreign Letter 2 p1, 5 pa

SAFED

August 12, 1908



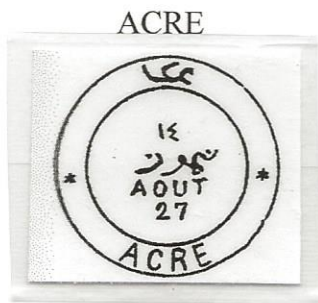
REGISTERED COVER SAFED TO LONDON, ENGLAND



Registry Cachet (S 47/05 C RC 3); Safed (S 47/09 C PM 5); arrival London Sept 28-1908
JUDAICA Item- Note Envelope Heading and Destination

TURKISH ADMINISTRATION

Registered Foreign Letter 4 pi
+ overweight



S 01/05
C PM 7

LATEST DATE FOR THIS POSTMARK –MAY 15, 1899



3 recorded registered cover with this postmark—all same correspondence

PM: Acre March 29(= May 15); Alexandria 17 V 99; London 24 May 99 (79501); New York 6-2-99 (88525)

Rate: Foreign letter 1 pi + registration 1 pi + overweight 2 pi (2x) = 4pi

Postmark dated 9 years later than Steichele or Collins latest date

TURKISH ADMINISTRATION

Registered Foreign Mail 2 pi

JERUSALEM

MARCH 2, 1915

VERY SCARCE REGISTRATION LABEL AND POSTMARK (S 28/22, C- PM 26)



SEVENTH COVER WITH JERUSALEM REGISTRATION LABEL C-RL 11

Unlisted in Collins among registered covers

Addressed to New York City, via Beirut

Reverse Postmarks: Beyrouth March 13, 1915; 3 New York Registry April 14, 1915, two in violet, one black

Censored cachet black rectangular, uncommon



TURKISH ADMINISTRATION

Registered Foreign Mail 2 pi
+war tax 20 pa

JRUSALEM

December 18, 1899



Originally submitted to Turkish post office with Russian adhesives-invalidated with pen strokes

Postmarked: Jerusalem Dec 18, 1899 (S 28/06, C PM 8) x 3 (very close to perfect outer circle)

Transit Paris Dec 29. 1899;

reverse: oval registered San Francisco Jan 12, 1900; REGISTRY DIVISION (straight line violet)
double circular mark "Aug. 1 st. Hospital Jerusalem" "MISOAB-VADACH"

Registration mark JERUSALEM PALESTIN (S 28/28, C RC 1) No. 600 (manuscript) + 4226

Cachet: RECOMMANDIR

Note: The fact the Russian adhesives were initially applied may indicate that the sender was Dr Israel d'Arbela, famous Jewish physician who worked out of the Jewish hospital in Jerusalem, and mailed a letter from Jaffa on January 8, 1900 (about 10 days later than the above) with Russian adhesives to New Zealand, which cover is in this collection. The above cover has no return address

TURKISH ADMINISTRATION

BETHLEHEM

Registered Foreign Postcard 1 pi 20 pa

Registration 1 pi

Postcard 20 pa

ONLY ONE REGISTERED POSTCARD FROM BETHLEHEM PER COLLINS



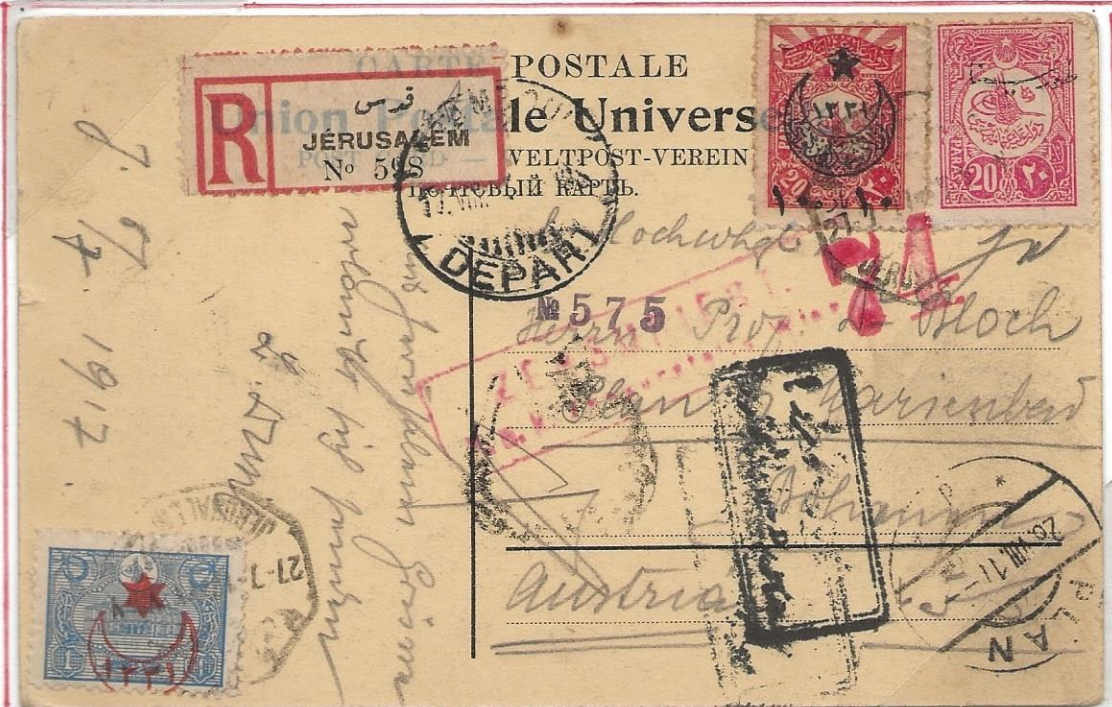
Picture postcard to Vienna dated Dec 24, 1898 on reverse

Postmarks: Telegraph mark "Bethlehem Post and Telegraph Office" with date. Very late use

Registered Foreign Postcard 2 pi

+war tax 10 pa

ONLY RECORDED POSTCARD WITH THIS REGISTRATION LABEL—12 ITEMS KNOWN



Jerusalem to Austria Arrival postmark PLAN d 28 VIII 17

Registration label: German type tied by pm TAMBOU DEPART IV VIII. Note label is tied by pm in Istanbul, not Jerusalem. Applied by German Government assistant. Note: 1 pi added on over Jerusalem pm; censored

TURKISH ADMINISTRATION

Registered Foreign Postcard 1pi, 20 pa

JERUSALEM

January 12, 1915

ONLY RECORDED REGISTERED POSTCARD WITH HEBREW/FRENCH LABEL



Jerusalem Octagonal 6 (S 28/22; C PM 26) 12-1-19 (15) from Jewish Quarter to Beyrouth

Beyrouth arrival 21-1-19 (15)

Franked 3x 20 pa

Registration label No. 265 (C RL 11) –only six covers from Jerusalem and three covers from Mea Charem recorded per Collins

Jerusalem censor mark (S 28/42 C M 3 ?) (gray) with Hebrew endorsement across top (manuscript)

Message in Yiddish

GREAT RARITY per Tsachor

TURKISH ADMINISTRATION

Registered Foreign Stationary 2 pi

JERUSALEM



S 28/15
C PM 17

TURKISH CENSOR MARK LATER THAN STEICHELE AND COLLINS-1915



"passed censor"

Postal stationery envelope of 1 pi + 1pi added for registration

Addressed to Germany

Postmarks: Jerusalem

Arrival: COLN, BAYENTHAL C 15-1-15 (reverse)

Registration mark: (S-28/29, C RC 2) and manuscript 234; LATEST DATE RECORDED

Censor cachets: Turkish S-28/41; C M 1—Steichele and Collins lists use only during 1914

"UBERPRUFT" —Brasso, Austro-Hungarian Transylvania

TURKISH ADMINISTRATION

UNUSUAL DESTINATION-AFRICA -RHODESIA

Registered Wrapper 2 pi

JERUSALEM -November 7, 1912



Jerusalem; transit Port Said R 12-11-129 (reverse)

Jerusalem registry hand stamp

Manuscript 786 and 1372 (blue) and No, 402 censored out Registered wrapper unusual

S

UNUSUAL DESTINATION-EUROPE—RUSSIA

JERUSALEM Oct 31, 1898

Registered Postcard

1 pi 20 pa



Registered postcards very uncommon. Picture postcard dated Oct 31, 1898; arrival Russia 29 OKT, 1898 (Error)

Registration mark: not listed in Steichele, with manuscript "319", "Charge", "N 395"; Russian cachet

TURKISH ADMINISTRATION

ACRE

Domestic Registration

+ Advice of Receipt 2 pi, 20 pa

ADVICE OF RECEIPT



Registered printed envelope from Acre to Haifa

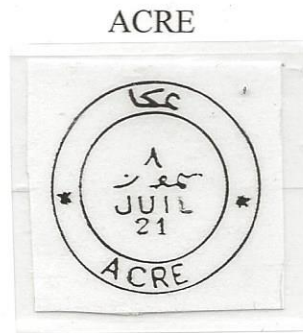
Rare rate: registration 1 pi + advice of receipt 1 pi + domestic stationary 20 pa = 2 pi 20 pa

Pm: St. Jean D' Acre (S 01/08; C PM 11) May 24, 194; arrival Caiffa 2 (S 19/09; C PM 11) May 25, 1914
Advice of receipt (C AR 1)

TURKISH ADMINISTRATION

Registration + Advice of Receipt 4 pi

+ Double weight



S 01/05
C PM 7



C RC 1

REGISTERED WITH ADVICE OF RECEIPT MARK-2 RECORDED



Acre pm May, 1987; reverse: transit Galata illegible; arrival Istanbul, date Arabic

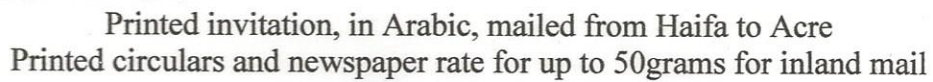
Seal : Advice of delivery (C RC 1)-Later date than Collins; this is 3rd example.

Rate: Domestic letter 1 pi +registration 1 pi +advice of receipt 1 pi +additional weight 1 pi = 4 pi

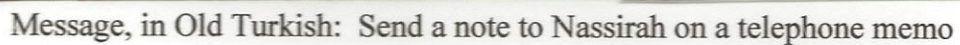
"23" gms written on front-double the rate, when over 10 gms.

Printed Matter 2 pa

2 PARA- ONE OF THE RAREST TURKISH RATES



Addressed to Nassif, Post and Telegraph Director



TURKISH ADMINISTRATION

Local Printed Matter 2 pa

JERUSALEM

MAY 26, 1915

RARE RATE; 2 pa LOCAL PRINTED MATTER

Jerusalemmer Warte



Hrn. Im. Breisch.
Jaffa.

Privately Printed Newspaper Wrapper

Jerusalem Postmark May 21, 1915 (S-28/10; C-PM 13)

Reverse: Jaffa 5 May 31, 1915

TURKISH ADMINISTRATION

Domestic Printed Matter 2 pa

JERUSALEM 2

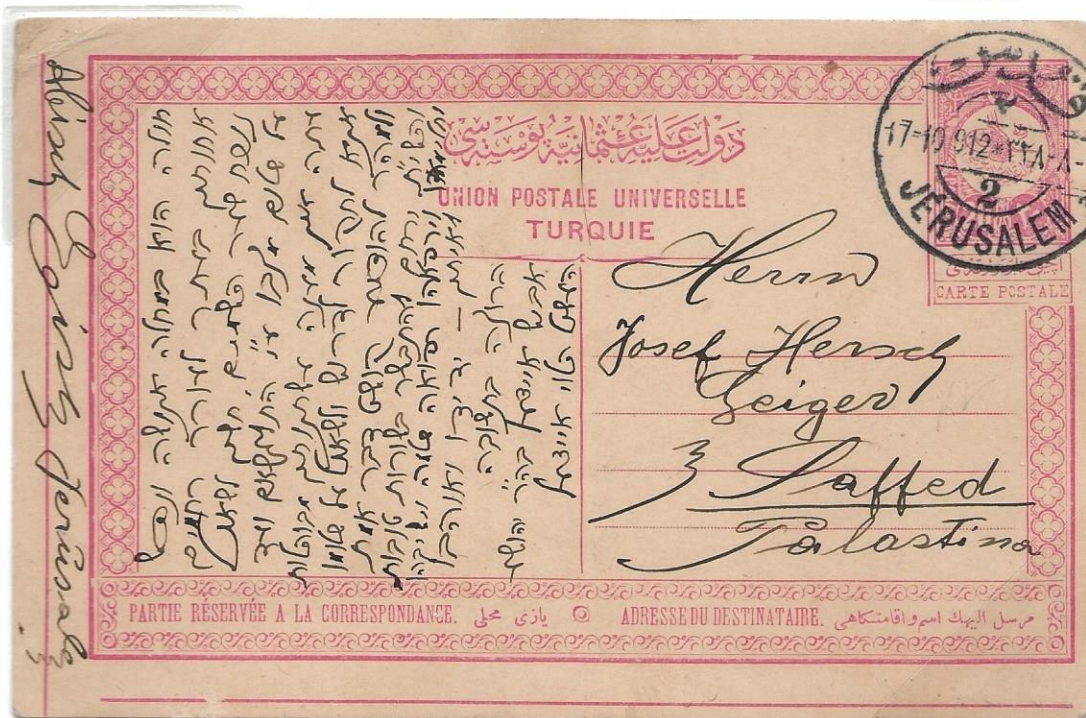
JERUSALEM "PORT CITY" RATE TO JAFFA, SCARCE LOWEST TURKISH RATE



Jerusalem (S 28/18 C PM 22) Sept 19, 1917 to Jaffa

Domestic Postcard 20 pa

IMPRINTED POSTCARD TO SAFED WITH MESSAGE IN YIDISH



Jerusalem (S 28/13 C PM 16) October 17, 1912

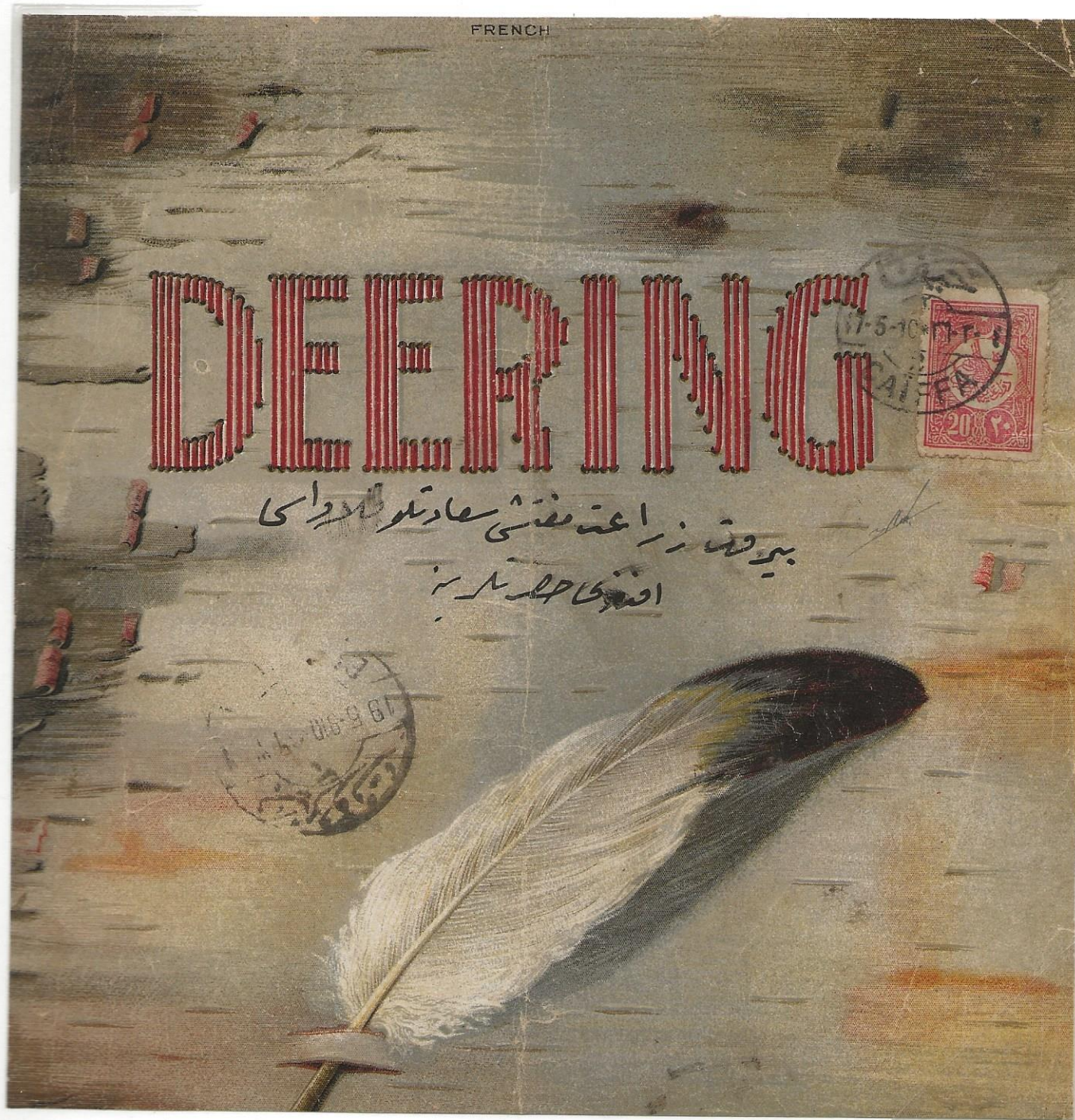
TURKISH ADMINISTRATION

Printed Matter Multiple rate (x4) 20 pa

HAIFA

May 17, 1910

MULTIPLE RATE -x4



Front page of a journal book mailed to Beirut

Postmarks: Caiffa (S 19/08) May 17, 1910; arrival Beirut May 19 (1) 910 Two days after dispatch

Rate: Four times 5 pa rate for printed matter port to port (Littoral)

TURKISH ADMINISTRATION

Domestic Postcard 10 pa at Printed Matter Rate

AIOUN CARA

AUGUST 29, 1907

JEWISH NEW YEAR (ROSH HASHANA) PICTURE POST CARD of Der Tempelplatz



Aïoun Cara (S 03/01; C PM 1); arrival Galata; illegible postmark (same date) on reverse

Greeting written in Hebrew by Freiman family in more than five words but accepted at printed matter rate

TURKISH ADMINISTRATION

Printed Matter 10 pa

JAFFA PORT

Dated 1311-1895

SENT AT PRINTED MATTER RATE WITH ENVELOPE UNSEALED



Reduced (70%)

Addressed: "Ziiga (Ziya) Effendi, Interpreter of Patriarch" (with elaborate salutation), Jerusalem

Reverse: Arrival postmark Jerusalem Sept 8,...(C PM 8) all have damage at 2 o'clock
Collins claims no postmark seen with perfect outer circle-This example vary close to perfect

Fancy color embossing may indicate it contained an invitation or thank you note

TURKISH ADMINISTRATION

Printed Matter 10 pa

JERUSALEM

February 13, 1889

20 pa BISECT TIED TO PRINTED MATTER FOR 10 pa RATE



Luxurious type cover with unsealed flap, for printed matter rate, to Strassburg

Postmarks: transit Constantinople 24-2-89; reverse Strassburg arrival 1-13-89 !! (incorrect dating)

May indicate sender or post office with shortage of 10 pa stamps when sending a large number of printed matter

Reverse flap has fancy engraving of "JC", indicating a possible invitation to an event

Bisect from this issue, only one recorded, used in the Holyland to date

TURKISH ADMINISTRATION

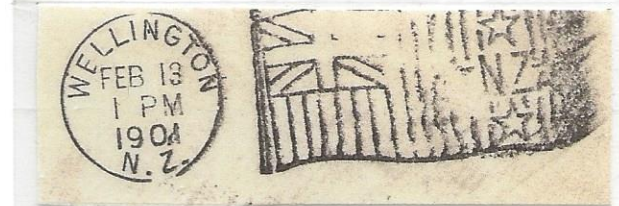
Printed Matter Rate 10 pa

JAFFA

January ? 1901

UNUSUAL DESTINATION—ASIA

NEW ZEALAND



SENT AT PRINTED MATTER RATE WITH ENVELOPE UNSEALED



ONLY KNOWN PRINTED MATTER HOTEL STATIONARY COVER FROM OTTOMAN EMPIRE ERA
TO NEW ZEALAND.

Jaffa Hotel Du Parc stationary cover (Type unlisted) in Bale Catalogue to Wellington, NZ

Note manuscript Open in left upper quadrant to allow printed matter rate

Postmarked: "YAFFA POSTA SHUBESI"- Jaffa Branch Post Office

Reverse: arrival PM Wellington, NZ February 13, 1PM, 1901 with NZ Flag inscription

TURKISH ADMINISTRATION

Printed Matter 10 pa

JERUSALEM

November 11, 1914

EUROPEAN DESTINATION FORWARDED BY TURKISH POST AFTER OCTOBER 1, 1914



Postcard to Germany paying printed matter rate with message of 5 words or less

Postmark: Jerusalem (S-28/22; C-PM 26)

Mailed shortly after Ottoman Empire entered WW1 on side of Germany

Reverse: Illustrated pc of Yemenite children in Rehovot with affixed Jewish charity label

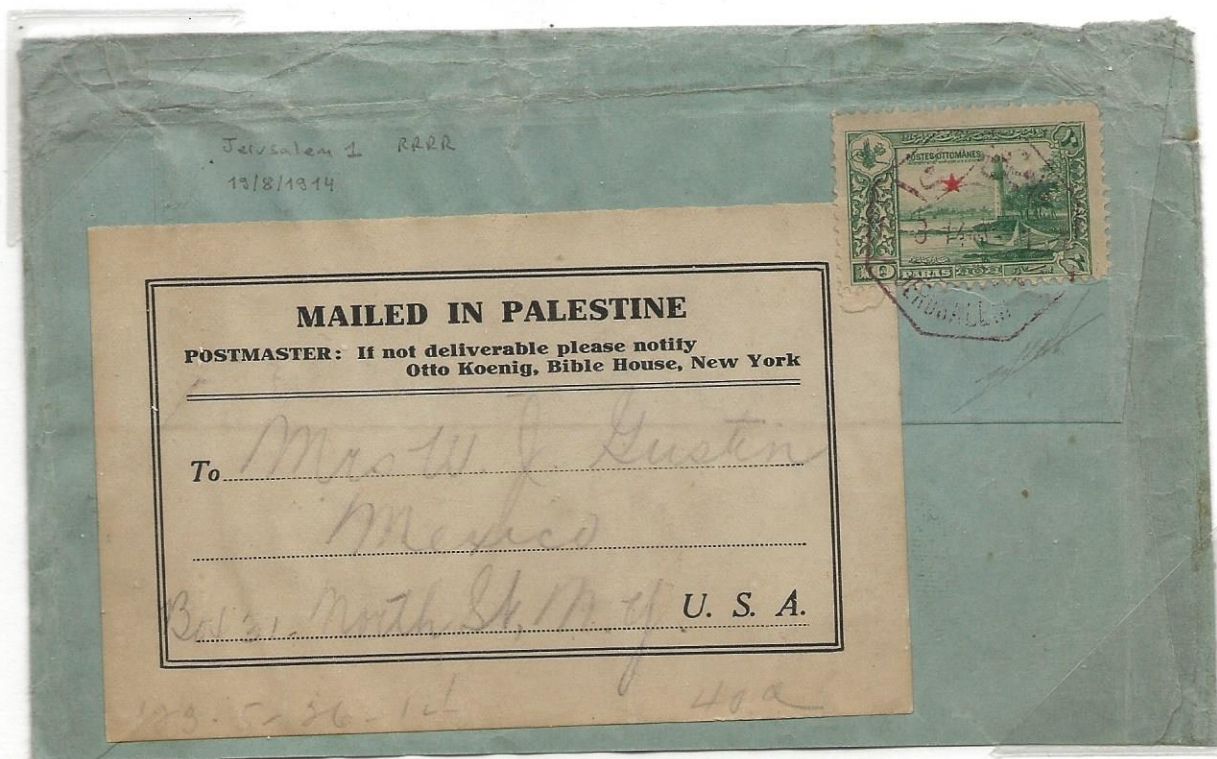
TURKISH ADMINISTRATION

Printed Matter 10 pa

LONDON

August 10, 1914

THIS POSTMARK (S-28/17), IN VIOLET, UNLISTED IN STEICHELE



7 cards/covers known with this type of postmark (C-PM 21)

Addressed to New York

Cover with flap apparently open (missing) to meet requirements

TURKISH ADMINISTRATION

Foreign Postcard 10 pa
Printed Matter Rate

NAZARETH

April 12, 1908

UNUSUAL DESTINATION—SOUTH AMERICA

CANELONNES, URUGUAY



Souvenir card showing interior of Basilica of the Enunciation, Nazareth dated "Bayoruth (Beirut) IV-12-1908 to Canelonnes, near Montevideo

Postmarks: Nasre April 12.....;CANELONNES REP. O DEL URUGUA 17 May 1908
Reverse: transit R.. Ber April 26, 08

Elapsed time : 36 days

TURKISH ADMINISTRATION

Registered Printed Matter 1 pi 10 pa

JERUSALEM BRANCH POST OFFICES

QUART ISRAELITE

Apparently located opposite Hurva Synagogue

ONLY KNOWN EXAMPLE OF THIS REGISTRATION LABEL USED IN THE JEWISH QUARTER



Cover to Wuertzburg, Bavaria with postmark (25/05, C PM 6), dated October 9, 1901 from branch post office.

Reverse, post mark Jaffa (S 22/07 C PM 10) dated October 9, 1901 and Wuertzburg arrival October 20, 1901

Registration label C RL 3 was one of the provisional labels locally produced under the authority of the local postmaster E. Honig

TURKISH ADMINISTRATION

**Registered Foreign Printed Matter 1 pi 30 pa
30 pa each additional 15 g**

JERUSALEM BRANCH POSTOFFICE

QUART ISRAELITE

March 2, 1903

EARLIEST DATE KNOWN FOR THIS REGISTRATION LABEL (C RL 9.)



SECOND COVER KNOWN with this registration label from Quart Israelite

Collins "Only Cover" No. 2548 with earliest date April 22, 1903. Above with manuscript 3-20-03

Apparently contained printed matter as reverse unsealed
Reverse: Oval postmark New York. NY REG' Y. DIV. 3-21-1903 and Oval REG DIV.
Springfield, Mass Mar 22, 1903 (violet)

TURKISH ADMINISTRATION

Official Mail Free

HEBRON (HALIL UL RAHMAN)

DOUBLE BOX IN RED



Registration Receipt

RECOMMANDÉE

CRC 3

ILLUSTRATED IN COLLINS

ONLY RECORDED EXAMPLE OF REGISTRATION CACHET ON RECEIPT

Top: Official cover addressed to an official place in Jaffa

Only 2 RED postmarks recorded from Hebron 5 covers recorded

Black seal, 14 mm diameter, on front and back- 'TAHIKAT-MUE-HIMME' "Important Correspondence"

Approximately only 10 red postmarks known from all Turkish post offices

Bottom: Registration receipt Sept 11, 1911

THIS DATE IS 10 YEARS LATER THAN STEICHELE

TURKISH ADMINISTRATION

Money Order Coupon 105 pi

NABLUS

July 24. 1905



S 40/05 C PM 8

HIGHEST RECORDED FRANKING ON A SINGLE TURKISH MAIL ITEM
POSTMARK IN BLUISH-GREEN—RARE



Money order for value of 41,950 pi with complete coupon addressed to Beirut

Franked with 53 adhesives, 52x2 pi + 1 pi Reverse: 26 x 2 pi and 1x 1pi; 13 postmarks

Postmarks: Nablous 24-7-905 x28; Acre transit (S 01/07; C PM 9) same date; Beirut 28-7-05

TURKISH ADMINISTRATION

Money Order 95 pi

NABLUS

July 1918

ONE OF HIGHEST RECORDED FRANKINGS ON A SINGLE ITEM



Front 70%

NABLUS 1 (S 40/07) x 6 (3 + 3) tying 19 5pi adhesives (7+ 12) for 25,000 pi of value

Reverse: complete coupon; negative censor mark; GBAA ? 2.7.1918 and pm Beyrouth 8.7.1918

TURKISH ADMINISTRATION

POSTAGE DUE
DOUBLE THE DEFICIENCY

Postage Due 1pi

Foreign Postcard 20 pa rate

1894 OBSOLETE POST CARD DEMONITIZED 1892



Dated Beit Sala (near Bethlehem) 23.3.95 postmarked Jerusalem 3-26-1895 to Beirut; arrival: 3-28-95 (reverse)
INVALID 1 Pi ADHESIVE INTENDED FOR FOREIGN POSTAGE

Postage Due 2 pi

Foreign Letter 1 pi rate



Postmarked Constantinople October 7, 1908

TURKISH ADMINISTRATION

Postage Due 10 pa

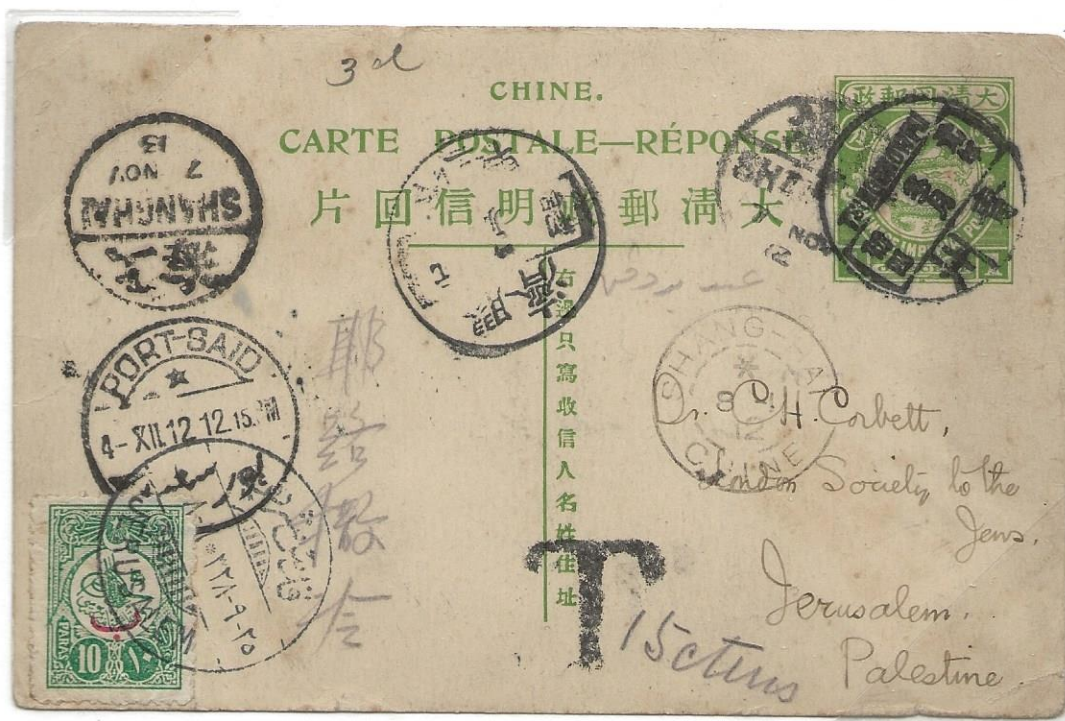
JERUSALEM

Dec 5, 1912



S-28/15
C PM 18

TURKISH POSTAGE DUE ON INCOMING MAIL FROM CHINA



Turkish 10 pa overprinted 'Behie' of 1912 as postage due on Chinese post

Dispatch postmark : "Tsing Chow Fu" (card message dated Nov 3, 1912)

Transit: 3 different Shanghai postmarks - " 7 Nov 12 "- "Nov 13" ! (error); "8-11-12"; additional Chinese postmark; Port Said 4 XII 12 12.15. PM

Jerusalem postmark: (Steichele 28/15 C PM 18) tying postage due Turkish adhesive

Large "T" and manuscript 15 ctms in pencil

Reverse: Jerusalem 2 (S 28/13 C PM16) 5-12-912

TURKISH ADMINISTRATION

JERUSALEM

SENT FOUR DAYS PRIOR TO ALLENBY'S CAPTURE OF JERUSALEM

Domestic Letter 1 pi

+war tax 20 pa



Domestic Letter

20 pa

+War Charity

10 pa



Top: Sent by Turkish army officer, one of 4 similar letters

Some covers with this postmark, which is rare, were stolen but none of those had an arrival mark

Reverse: Postmark (Arabic) Jerusalem 3, Dec 4, 1917; Jerusalem military censor, also 1pi

adhesive. This postmark has to be LATER THAN COLLINS

S

Bottom

ACRE April 14, 1916

ONLY 5 KNOWN WITH THIS POSTMARK

Small cover to Jerusalem

Postmarks: All Arabic Acre 1. Ako 1.2. 332 x 2 = April 14, 1916

Reverse: Arrival Jerusalem (Date illegible)

One registered cover and 4 ordinary covers recorded

Oval censor seal

C

TURKISH ADMINISTRATION

INCOMING MAIL

Foreign Letter 1 pi
+ war tax 10 pa

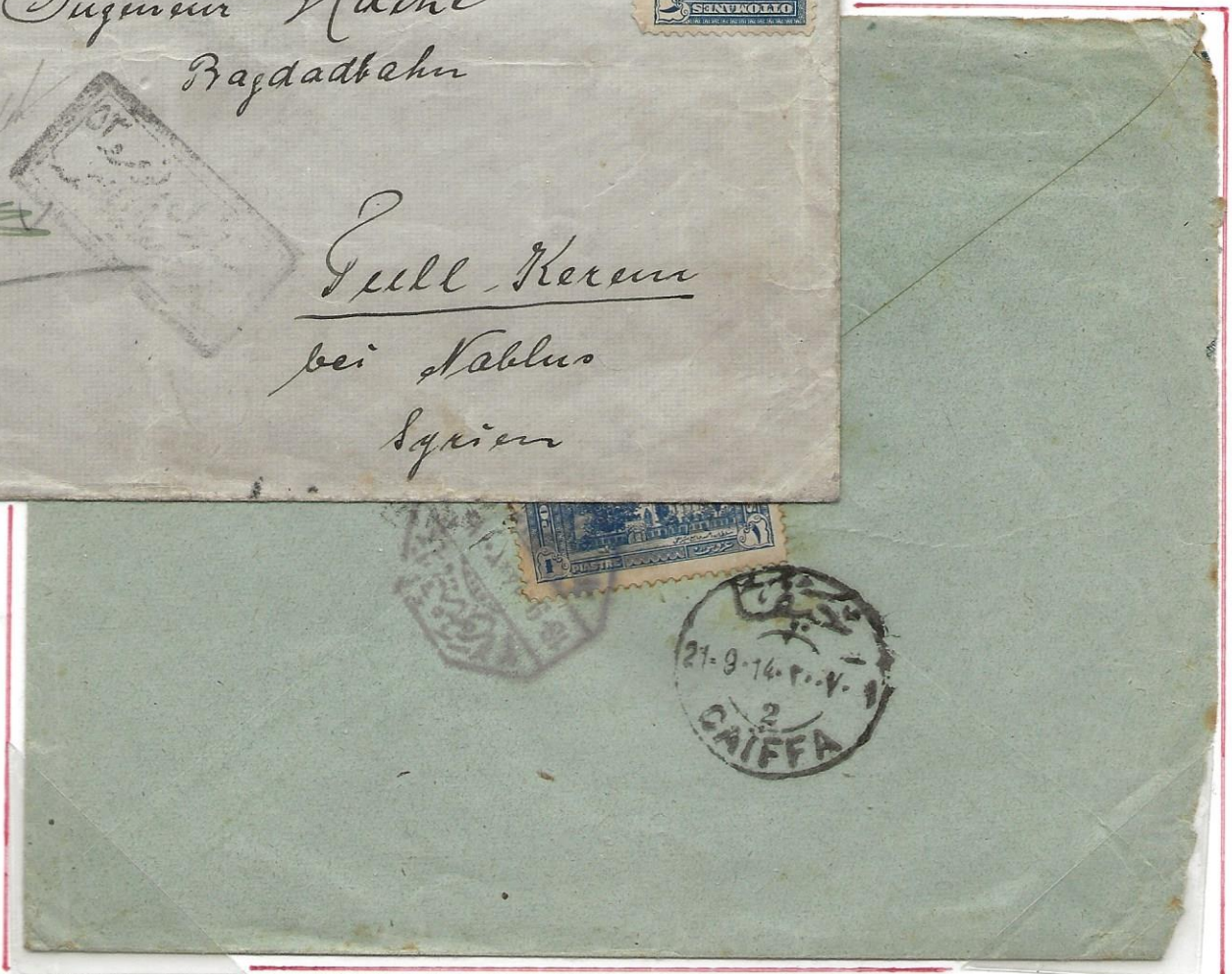
ISTANBUL TO TUL KARIM TO BENI SAAB TO BEERSHEVA
PERA pm Nov 11, 1918 to Tul Karim -not there- sent to Beni Saab, arrival Nov 19, 1915
Headquarters for tracing individuals at that time was in Beni Saab due to war conditions
"To go to Beersheva" (upper left corner, in Arabic)

Reverse: arrival pm rare Arabic Beersheva 1 dated Nov 30, 1915. 11/2 YEARS LATER THAN COLLINS
Censored cachet (Istanbul)"This has been censored by censorship committee

Otto Keil, Constantinople.



S



ONLY KNOWN COVER IN FORERUNNER PERIOD FROM SAUDI ARABIA

HAIFA ARRIVAL Sept 21, 1914

Issue of 1913. Postmarked from Mecca

MECCA 2 Sept 18, 1914 Only 2 recorded. Postmark in use only one month

TURKISH ADMINISTRATION

Rate ?

HEBRON

Date ?

TELEGRAPH RECEIPT

Handwritten receipt form with fields for Mot's, N^o, Expéditeur, adresse, and Signature de l'Employé. Includes a red circular seal and a stamp with the word "TÉLÉGRAMME".

Handwritten notes and stamps include:

- Top right: No 631
- Left margin: 1911
- Right margin: 6 p1 30 p2
- Bottom left: 1911
- Bottom right: 6 p1 30 p2

NEGATIVE SEAL UNLISTED IN ANY CATALOGUE SIMILAR TO TYPE T 1 (C. S)

Example is similar to figure 67 in Collins and Steichele from Alexander collection

Noted as Very Rare

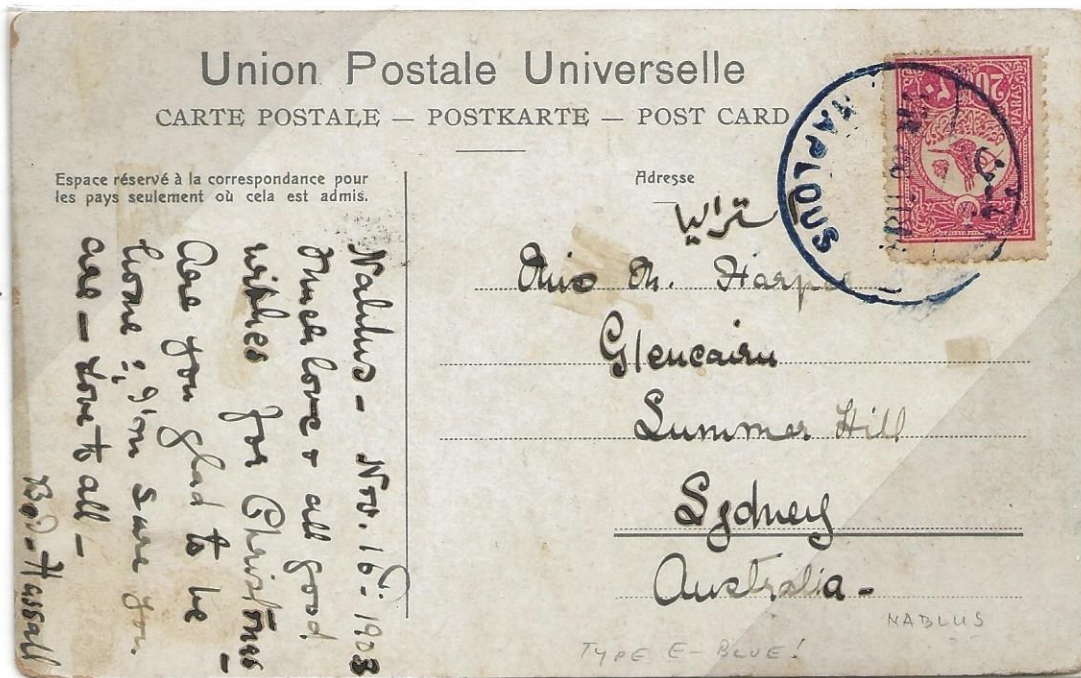
TURKISH ADMINISTRATION

Foreign Postcard 20 pa

NABLUS

Nov 16, 1903

UNUSUAL DESTINATION—AUSTRALIA



POSTMARK IN DARK BLUE NOT LISTED

Colored picture postcard of Tiberias to Sydney, Australia

Message date Nov. 16, 1903 with Nablus postmark date ineligible

TURKISH ADMINISTRATION

HAIFA October 14, 1813

Printed Matter 2 pa

2 PARA-ONE OF THE RAREST TURKISH RATES

Printed invitation, in Arabic, mailed from Haifa to Acre

Printed circulars and newspaper rate for up to 50 grams for inland mail

Domestic Printed Matter 5 pa

BENI SAAB PROVISIONAL ISSUE

5 PA PROVISIONAL ISSUE TIED TO NEWSPAPER WRAPPER PAYING PRINTED MATTER RATE

Field Post Office 46 December 20, 1917-Seven days earlier than Collins



Bad weather interrupted the stamp supplies from Damascus. Turkish authorities ordered to overprint unused items, not to be sold publicly, but were at higher prices to officers of German and Austrian units. 500 stamps were overprinted for used on money orders, wrappers, postcards, and covers. Money orders were destroyed after receipt-an estimated 200 items remained.

8th Turkish army was stationed at Tulkarim at this time. Wrapper addressed to the 128th Regiment S

TURKISH ADMINISTRATION

REMLE

Nov. 16, 1916

POSTAL RECEIPT FORM

اجرت 3 تودیع علم و بیری نومرو: 7

مقام
ارسل اولفق اوزره تعهدلی بر
قطعه
تسلیم اولندایم مین کتیبو سند
13
Leila Weissman
Olcarisch
M. J. J.

تغای پوی
میلی
REMLE
(نونه
۳۲)

Remle postmark (S 43/03; C PM 4)

In use June 1908 to October 1917

In 1853, Remle was a relay station for the courier route Saida-Jerusalem

TURKISH ADMINISTRATION

Postage Due 10 pa

JERUSALEM

6-25-1911

UNDERPAID FOREIGN POSTCARD

ATTEMPT TO PAY A CHEAPER RATE



Addressed to Italy with a 10 pa adhesive; postcard rate was 20 pa. Attempt to use the cheaper rate for printed matter by crossing out capital letters CARTE POSTALE to justify the cheaper rate.

Not accepted in Molena on arrival 7-3-11. Taxed with Italian 10 centimes adhesive, not double the deficiency! and postmarked 7-3-11.

Writer apparently thought he could use printed matter rate of 10 pa for messages limited to five words as there is no message on the reverse, only a picture of Jerusalem, Interior of the Sepulchre

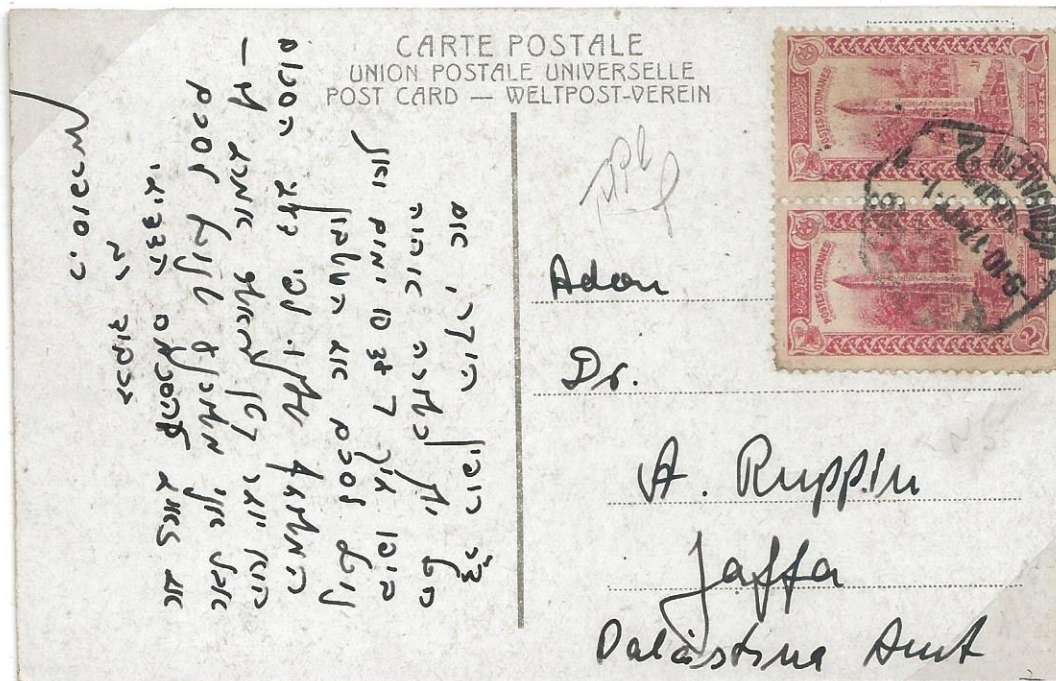
TURKISH ADMINISTRATION

Domestic Postcard 4 pa !!

JERUSALEM

October 9, 1917

POSSIBLE FRAUDULENT POSTCARD



Addressed to famous Zionist A. RUPPIN

REASONS FOR FORGERY DESIGNATION

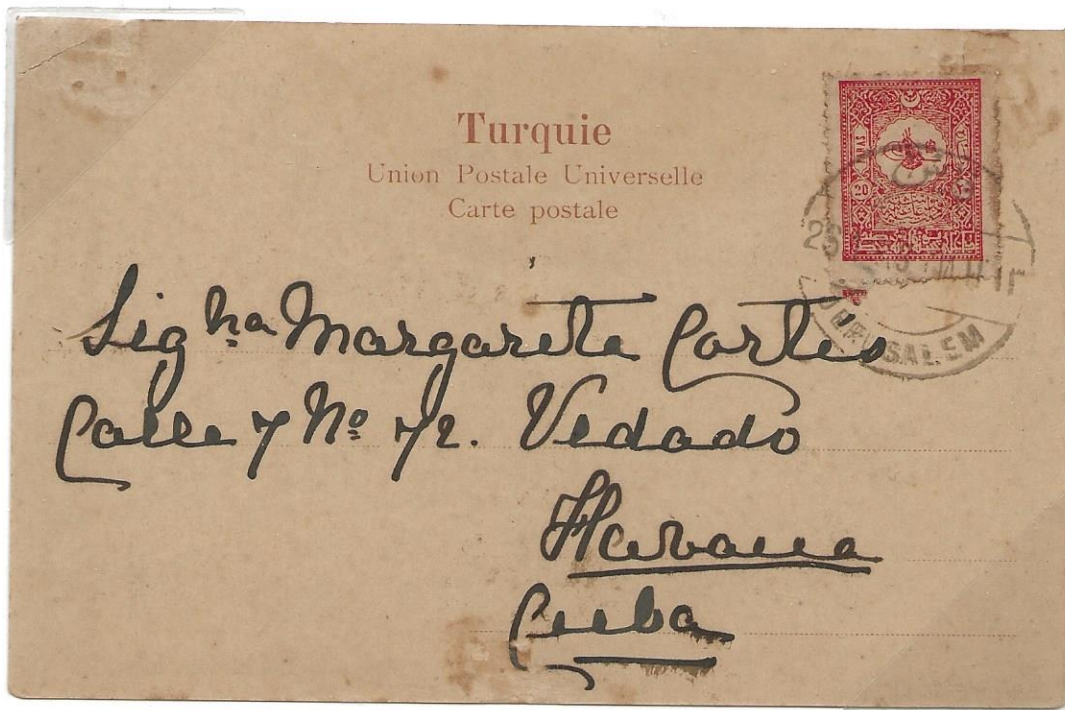
1. Postmark is "Jerusalem 2" (CS22) with latest date known is OCT 9, 2017 known to have been forged, per Collins
2. Postmark does not anchor adhesives to postcard
3. Rate is incorrect. Domestic postcard rate is 5 pa which would have required been taxed; definitely did not go through the postal service
4. Addressed to RUPPIN, an attempt to make item appear important for Judaica collectors
5. Also Reverse: photo of Jerusalem Wailing Wall with active participants praying "on Friday"
6. Unknown signature (manuscript) signifying genuine ??
7. Appears to have been created on an unused postcard, as it is in pristine condition

TURKISH ADMINISTRATION

Foreign Postcard 20 pa

FRAUD

ATTEMPT TO CREATE A RARE DESTINATION -CUBA



Postcard is addressed to Havana, Cuba. The reverse has a message dated "Jerusalem, 25/1/1903". alongside of a picture of "Jerusalem, Mosque of Omar"

The perpetrator thought the postmark was 26-1-03 and so wrote the message date as above. However, the postmark is actually 25-1-13 and the Arabic date clearly ends in "13". He probably had a blank postcard with a favor cancellation.

In addition, the address is clearly written ON TOP of the postmark and thus, written after the postmark. It would be a very unusual process to write an address after the card has already been cancelled with the attached adhesive.