

NEWFOUNDLAND

1910

WHITEHEAD MORRIS CO.

THE GUY ISSUE

MACDONALD & SONS

GUY SETTLED NEWFOUNDLAND
UNDER THE RULE OF JAMES I

THE KING JAMES BIBLE

WAS A PRODUCT OF HIS REIGN

JAMES I IS FEATURED ON THE 1¢ STAMP

THE
HOLY BIBLE,
CONTAINING THE
OLD AND NEW TESTAMENT.

TRANSLATED OUT OF THE ORIGINAL TONGUES,
AND WITH
THE FORMER TRANSLATIONS DELIGENTLY COMPARED AND REVISED,
BY HIS MAJESTY'S SPECIAL COMMAND

Appointed to be read in Churches.

CAMBRIDGE STEREO TYPE EDITION.

CAMBRIDGE:
STEREOTYPED AND PRINTED BY R. WATTS,
PRINTER TO THE UNIVERSITY:
FOR THE BRITISH AND FOREIGN BIBLE SOCIETY
INSTITUTED IN LONDON IN THE YEAR MDCCLV.

Cum Privilegio.

1596.

TO THE MOST HIGH AND MIGHTY PRINCE

JAMES,

BY THE GRACE OF GOD,

KING OF GREAT BRITAIN, FRANCE, AND IRELAND,
DEFENDER OF THE FAITH, &c.

The Translators of the Bible wish Grace, Mercy, and Peace,
through JESUS CHRIST our Lord.

GREAT and manifold were the blessings, most dread Sovereign, which Almighty God, the Father of all mercies, bestowed upon us the people of England, when first he sent Your Majesty's Royal Person to rule and reign over us. For whereas it was the expectation of many, who wished not well unto our Sion, that upon the setting of that bright Occidental Star, Queen Elizabeth of most happy memory, some thick and palpable clouds of darkness would so have overshadowed this Land, that men should have been in doubt which way they were to walk; and that it should hardly be known, who was to direct the unsettled State; the appearance of Your Majesty, as of the Sun in his strength, instantly dispelled those supposed and surprised mists, and gave unto all that were well affected exceeding cause of comfort; especially when we beheld the Government established in Your Highness and Your hopeful Seed, by an undoubted Title, and this also accompanied with peace and tranquility at home and abroad.

But among all our joys, there was no one that more filled our hearts, than the blessed continuance of the preaching of God's sacred Word among us; which is that inestimable treasure, which excelleth all the riches of the earth; because the fruit thereof extendeth itself, not only to the time spent in this transitory world, but directeth and disposeth men unto that eternal happiness which is above in Heaven.

Then not to suffer this to fall to the ground, but rather to take it up, and to continue it in that state, wherein the famous Predecessor of Your Highness did leave it: nay, to go forward with the confidence and resolution of a man in maintaining the truth of Christ, and propagating it far and near, is that which hath so bound and firmly knit the hearts of all Your Majesty's loyal and religious people unto You, that Your very name is precious among them: their eye doth behold You with comfort, and they bless You in their hearts, as that sanctified Person, who, under God, is the immediate Author of their true happiness. And this their contentment doth not diminish or decay, but every day increaseth and taketh strength, when they observe, that the zeal of Your Majesty toward the house of God doth not slack or go backward, but is more and more kindled, manifesting itself abroad in the furthest parts of Christendom, by writing in defence of the Truth, (which hath given such a blow unto that man of sin, as will not be healed,) and every day at home, by hearing the Word preached, by cherishing the Teachers thereof, by caring for the Church, as a most tender and loving nursing Father.

There are infinite arguments of this right Christian and religious affection in Your Majesty; but none is more forcible to declare it to others than the vehement and perpetuated desire of accomplishing and publishing of this work, which now with all humility we present unto Your Majesty. For when Your Highness had once out of deep judgement apprehended how convenient it was, that out of the Original Sacred Tongues, together with comparing of the labours, both in our own, and other foreign Languages, of many worthy men who went before us, there should be one more exact Translation of the Holy Scriptures into the English Tongue; Your Majesty did never desist to urge and to excite those to whom it was commended, that the work might be hastened, and that the business might be expedited in so decent a manner, as a matter of such importance might justly require.

And now at last, by the mercy of God, and the continuance of our labours, being brought unto such a conclusion, as that we have great hopes that the

1-1000

NEWFOUNDLAND

ESSAYS AND PROOFS

1910

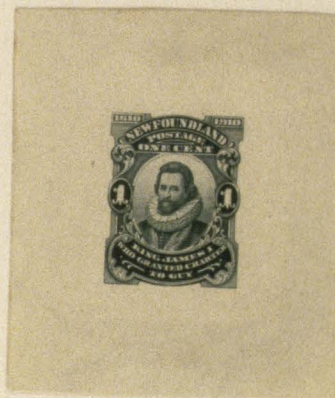
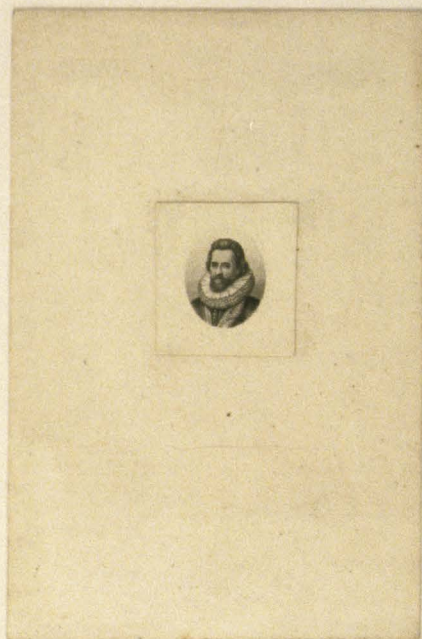
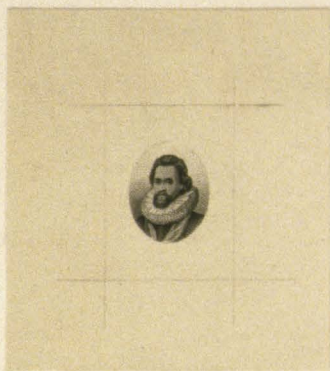
WHITEHEAD MORRIS CO.

MAC DONALD & SONS

ON CARDBOARD .0125

ENGRAVED

ESSAYS



VIGNETTE OF 1¢

THIS ENGRAVING LOOKS VERY

MUCH LIKE DE LA RUE WORK

VIGNETTES PROBABLY ALSO EXIST OF THE
3¢ (GUY), 6¢ (BACON), 12¢ (EDWARD VII)
AND 15¢ (GEO. V)

NEWFOUNDLAND

ESSAYS AND PROOFS

1910

WHITEHEAD MORRIS CO.

ON CARDBOARD .0125

MAC DONALD & SONS

ENGRAVED

LARGE DIE PROOFS



ENGRAVED BY MAC DONALD AND PRINTED AND PERFORATED BY
 WHITEHEAD MORRIS. THESE ARE PROBABLY THE ORIGINAL
 TRIAL COLOR PROOFS, THE SAME COLOR WAS USED ON THE

12¢ PROOFS.

1-1020

NEWFOUNDLAND

WHITEHEAD MORRIS CO.

MACDONALD & SONS

ENGRAVED ON CARDBOARD .0100

ESSAYS AND PROOFS

1910

LARGE DIE PROOFS



1-1030

NEWFOUNDLAND

ESSAYS AND PROOFS

1910

WHITEHEAD MORRIS CO.

ON CARD BOARD .0125

MAC DONALD & SONS

ENGRAVED

LARGE DIE PROOFS

TRIAL COLORS



PROBABLY TRIAL COLORS FOR THE LITHOGRAPH ISSUE

5

1-1040

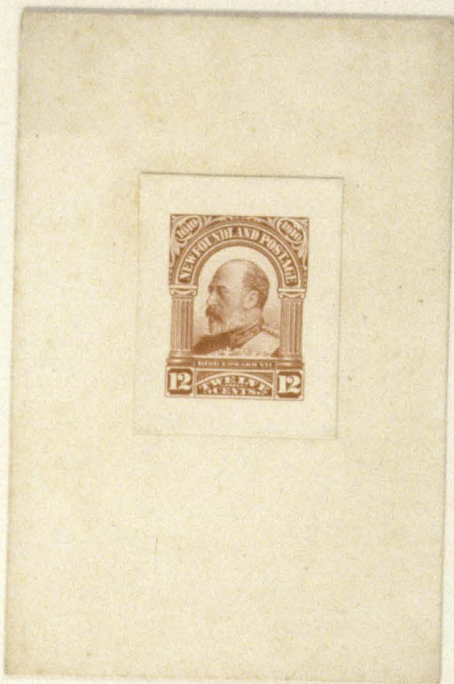
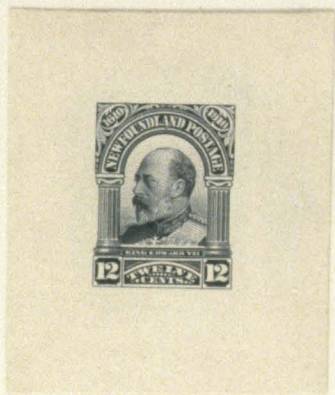
NEWFOUNDLAND

WHITEHEAD MORRIS CO.
MACDONALD & SONS
ENGRAVED ON CARDBOARD .0125

ESSAYS AND PROOFS

1910

LARGE DIE PROOFS



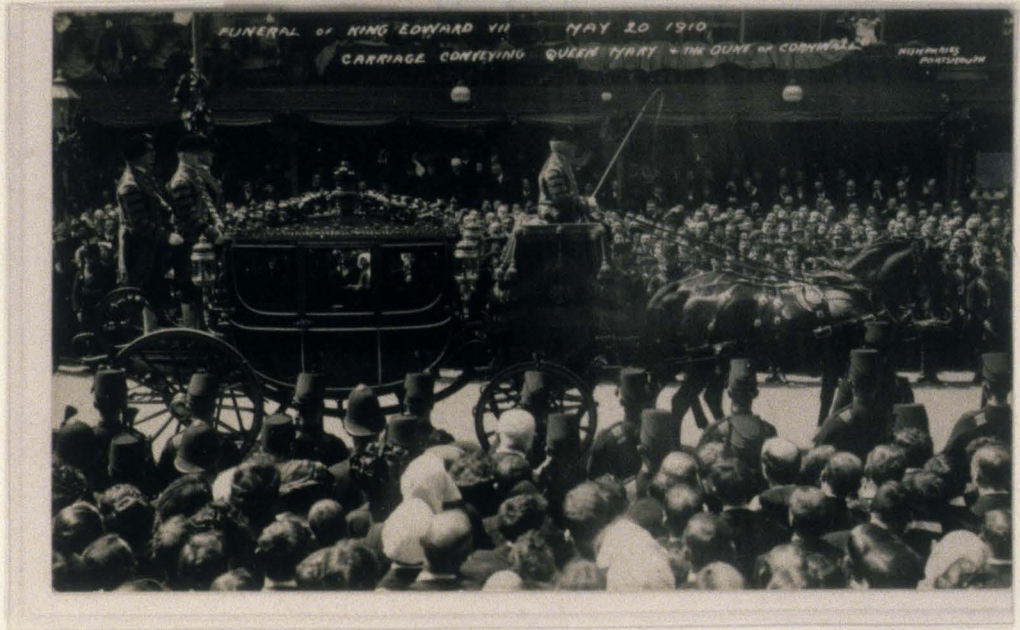
THIS DIE PROOF AND THE VIGNETTE OF THE 1¢ ARE BELEIVED TO
HAVE COME FROM THE EFFECTS OF THE ENGRAVER. THE COLOR IS THE
SAME AS THAT OF THE COLOR TRIALS.

9

NEWFOUNDLAND

1910

FUNERAL OF EDW. VII



CARRIAGE WITH QUEEN MARY



THE ESCORT

NEWFOUNDLAND

1910

FUNERAL OF EDW. VII



THE GUN CARRIAGE



THE NAVAL CONTINGENT

1-1040

NEWFOUNDLAND

WHITEHEAD MORRIS CO.

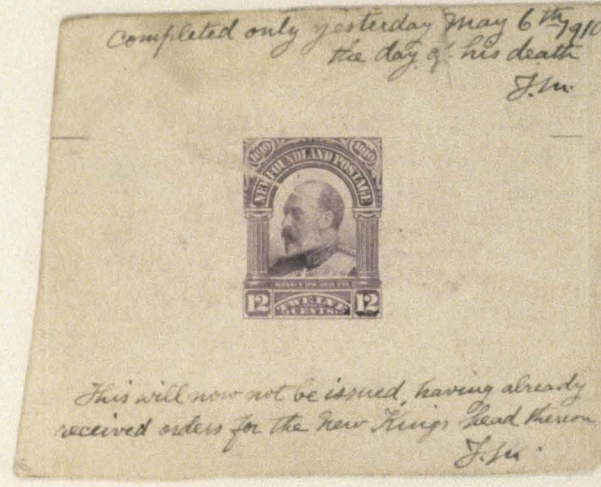
ESSAYS AND PROOFS

MAC DONALD & SONS

1910

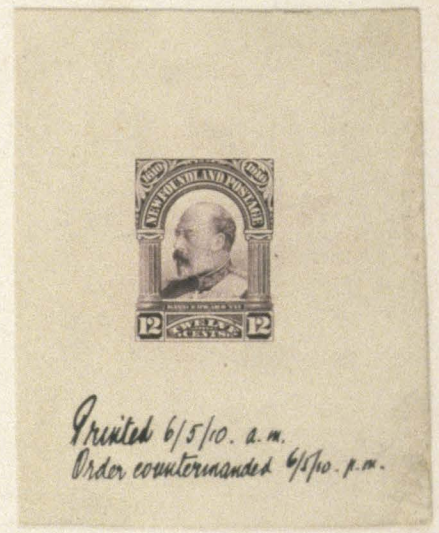
ENGRAVED ON CARDBOARD .0025

LARGE DIE PROOF



THIS DIE WAS FINISHED ON THE DAY
OF THE DEATH OF KING EDWARD VII.
DESPITE THE NOTE ON THE PROOF, THE
STAMP WAS ISSUED. THE 15¢ VALUE HAD
THE VIGNETTE OF KING GEORGE V
HIS SUCCESSOR.

THE FIRST PURPLE PROOF OF THE
12¢ HAS ON THE OBVERSE FOR MR
MACDONALD'S THUS CONFIRMING THAT
MACDONALD & SONS DID THE ENGRAVING.



6

1-1060

NEWFOUNDLAND

ESSAYS AND PROOFS

1910

WHITEHEAD MORRIS CO.

ON CREAM WOVE .0085

MAC DONALD & SONS

ENGRAVED

LARGE DIE PROOFS



THIS DIE IS 10.2CM X 7.8CM (LARGER THAN PERKINS, BACON)
AS THESE DIE PROOFS WERE PREPARED AFTER THE DEATH OF EDWARD VII,
THEY WERE PROBABLY SUBMITTED FOR APPROVAL TO KING GEORGE V IN MAY
1910. NOTE ABSCENCE OF MARKS AT SIDES WHICH SHOW ON BLACK PRINTS,
PROBABLY MADE BEFORE HARDENING.

1-1070

NEWFOUNDLAND

ESSAYS AND PROOFS

WHITEHEAD MORRIS CO.

MAC DONALD & SONS

1910

LITHOGRAPHED ON WOVE .00350

SMALL DIE PROOFS

? Under
? Mac



ESSAY - NOTE LACK
OF SHADING IN
CROSS OF 2¢

THESE ARE IMPRESSIONS
FROM A "MASTER"
STONE TO PROVE
ENGRAVING. THE 2
& 5¢ STAMPS WERE
USED AS A PLATE
MADE FOR TRANSFER

1-1075

NEWFOUNDLAND

ESSAYS AND PROOFS

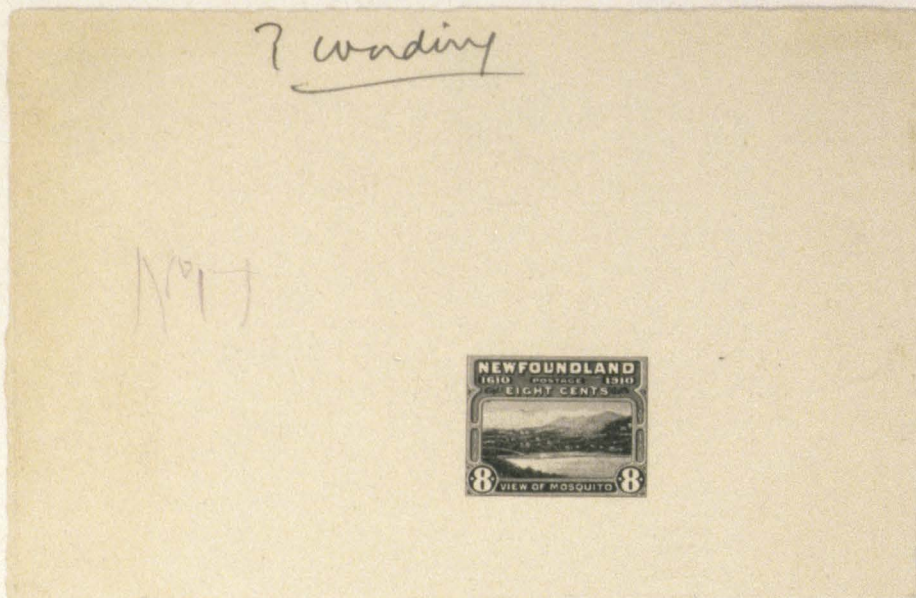
1910

WHITEHEAD MORRIS CO.

MACDONALD & SONS

LITHOGRAPHED ON .0044 WO

LARGE DIE PROOFS



1-1080

NEWFOUNDLAND

ESSAYS AND PROOFS

1910

WHITEHEAD MORRIS CO.

MACDONALD & SONS

ON WOVE .006 GLAZED

ENGRAVED

LARGE DIE PROOF



THIS CURIOUS PROOF APPEARS TO BE AN ATTEMPT TO CREATE A
BLOCK OF 4 PLATE FOR TRANSFER TO A LITHO STONE FOR THE
FIRST SUBMISSION PROOFS.

17

NEWFOUNDLAND

ESSAYS AND PROOFS

1910

WHITEHEAD MORRIS CO.

MACDONALD & SONS

ON WOVE .0035, GUM

LITHOGRAPHED

TRIAL PROOF TRIAL COLORS



NOTE BREAK BELOW CE OF CENTS IN UL STAMP.

WHITEHEAD MORRIS WAS DIRECTED TO PREPARE AND PRESENT PROOFS IN BLOCKS OF 4, ON STAMP PAPER, GUMMED AND PERFORATED. SIX SETS WERE MADE IN SUGGESTED COLORS. THESE IN BLUE ARE PROOFS OF THE PROOF PLATES. ONLY ONE SET IS KNOWN.

2

NEWFOUNDLAND

WHITEHEAD MORRIS CO..

ESSAYS AND PROOFS

MACDONALD & SONS

1910

LITHOGRAPHED ON WOVE .0035, GUMMED

TRIAL PROOF TRIAL COL



NOTE ABERATION UNDER L CENTS
IN UR STAMP



NOTE SCRATCH UNDER N OF
NEW IN UL STAMP



NOTE MISSFORMED C IN CENTS
LR STAMP.



NEWFOUNDLAND

WHITEHEAD MORRIS CO.

ESSAYS AND PROOFS

MACDONALD & SONS

1910

LITHOGRAPHED ON WOVE .0035, GUMMED

TRIAL PROOF TRIAL COL



NOTE SCRATCH IN L 10 OF LL STAMP.



NOTE COLOR, THE ONLY ONE IN RED

THE ABSENCE OF THE 15¢ INDICATES THAT THESE WERE PREPARED BEFORE THAT DIE WAS COMPLETED AND ALSO PRIOR TO THE PREPARATION OF THE BLACK ENGRAVED DIES ON WATERMARKED PAPER.

1-1120

NEWFOUNDLAND

1910

WHITEHEAD MORRIS CO.

ON WOVE .0035, GUM

MACDONALD & SONS

LITHOGRAPHED

TRIAL PROOF, TRIAL COLORS



Dark Green



Pea Green

AFTER THE BLUE SET WAS PREPARED, OTHERS WERE ALSO
 PRINTED. A TOTAL OF TWO DIFFERENT COLORS HAVE BEEN IDENTIFIED
 AND IT IS POSSIBLE THAT A COMPLETE SET OF EACH COLOR EXISTS

1-1130

NEWFOUNDLAND

1910

WHITEHEAD MORRIS CO.

ON WOVE .0035, 6

MACDONALD & SONS

LITHOGRAPHED

TRIAL PROOFS, TRIAL COLORS



Apple Green



Grey Green

W

1-1132

NEWFOUNDLAND

WHITEHEAD MORRIS CO.

ESSAYS AND PROOFS

MACDONALD & SONS

1910

LITHOGRAPHED ON WOVE .0035, GUMMED

TRIAL PROOF TRIAL COLORS



Umber



Olive

23

1-1137

NEWFOUNDLAND

1910

WHITEHEAD MORRIS CO.

ON WOVE .0035, GU

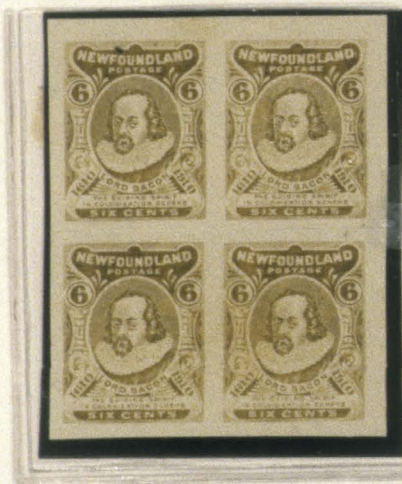
MACDONALD & SONS

LITHOGRAPHED

TRIAL PROOFS, TRIAL COLORS



Tan



Pale Olive

1-1142

NEWFOUNDLAND

ESSAYS AND PROOFS

1910

TRIAL PROOF TRIAL COLORS

WHITEHEAD MORRIS & CO
MACDONALD & SONS
LITHOGRAPHED ON WOVE .0035, GUMMED



Orange



Blue

BLUE - THIS IS THE ONLY SET KNOWN IN BLOCKS OF 4 WHICH IS COMPLETE

1-1147

NEWFOUNDLAND

1910

WHITEHEAD MORRIS CO.

ON WOVE .0035,

MACDONALD & SONS

LITHOGRAPHED

TRIAL PROOFS, TRIAL COLORS



Plum



45

1-1150

NEWFOUNDLAND

1910

WHITEHEAD MORRIS CO.

ON WOVE .0035, GUN

MACDONALD & SONS

LITHOGRAPHED

TRIAL PROOFS, TRIAL COLORS



Blue Green



Rose

27

1-1155

NEWFOUNDLAND

1910

WHITEHEAD MORRIS CO.

ON WOVE .0035, GUMMED

MACDONALD & SONS

LITHOGRAPHED

TRIAL PROOFS, TRIAL COLORS



Violet



SOME BLOCKS SHOW DENSER COLORS, PROBABLY DUE TO INK VARIATIONS

1-1160

NEWFOUNDLAND

1910

WHITEHEAD MORRIS CO.
MACDONALD & CO.

ON WOVE .0035, GUMMED
LITHOGRAPHED

TRIAL PROOFS, TRIAL COLORS



Purple



Brown

1-1170

NEWFOUNDLAND

ESSAYS AND PROOFS

1910

WHITEHEAD MORRIS CO.

ON WOVE .003

LITHOGRAPHED

GUMMED

COLOR TRIAL PROOFS



THESE ARE THE SAME COLORS AS USED ON SOME BLOCKS OF FOUR
THE 12¢ PLATE WAS FINISHED FIRST AND THESE COLOR TRIALS RUN OFF IN SHEETS
OF 100.

1-1172

NEWFOUNDLAND

ESSAYS AND PROOFS

1910

WHITEHEAD MORRIS CO.

MACDONALD & SONS

ON WOVE .0035, GUMM

PERFORATED & MOUNT

FIRST SUBMISSION LITHOGRAPHED PROOFS



AFTER APPROVAL OF THE TRIAL COLORS, PRESENTATION CARDS
WERE MADE FROM THE PERFORATED BLOCKS OF 4. COLORS WERE
APPROVED EXCEPT FOR THE 3¢ & 10¢ AND THE FIRM WAS INSTRUCTED
TO PREPARE THE 15¢ IN A COLOR DIFFERENT FROM THOSE SHOWN

1-1175

NEWFOUNDLAND

WHITEHEAD MORRIS CO.

ESSAYS AND PROOFS

MACDONALD & SONS

1910

ON WOVE .0035, GUMMED

FIRST SUBMISSION LITHOGRAPHED PROOFS

PERFORATED & MOUNTED



1-1177

NEWFOUNDLAND

WHITEHEAD MORRIS CO.

ESSAYS AND PROOFS

MACDONALD & SONS

1910

ON WOVE .0035, GUMMED
PERFORATED & MOUNTED

FIRST SUBMISSION LITHOGRAPHED PRO



32

NEWFOUNDLAND

WHITEHEAD MORRIS CO..

ESSAYS AND PROOFS

MACDONALD & SONS

1910

ON WOVE .0035, GUMMED
PERFORATED & MOUNTED.

FIRST SUBMISSION LITHOGRAPHED PROOFS



THE 15¢ VALUE WAS NOT INCLUDED IN THE FIRST PROOF SET. WHITEHEAD MORRIS WAS TOLD " NOT TO WAIT " UNTIL IT WAS FINISHED.

1-1180

NEWFOUNDLAND

WHITEHEAD MORRIS CO.

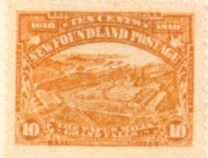
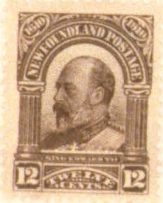
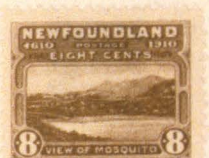
ESSAYS AND PROOFS

MACDONALD & SONS

1910

ON WOVE .0035, GUMMED
& PERFORATED 11.8 x 11.8

FIRST SUBMISSION LITHOGRAPHED PR



26

1-1200

NEWFOUNDLAND

ESSAYS AND PROOFS

1910

WHITEHEAD MORRIS CO.

PERFORATED 11.8 x 11.8

MAC DONALD & SONS

COLOR PROOFS

ON WOVE .0035, GUMMED



This
is
an
unknown



Probably
from
a block
of 4

THESE ARE SOME OF THE DISTINCTIVE COLORS
PRINTED OF THE FIRST SUBMISSION OF PROOFS.
MOST PROBABLY ONLY ONE BLOCK OF 4 OF THE
RED 12¢ WAS PERFORATED AS ABOVE.

14

NEWFOUNDLAND

ESSAYS AND PROOFS

1910

WHITEHEAD MORRIS CO.

ON WOVE .00350

LITHOGRAPHED

GUMMED

PLATE PROOFS

IN COLOR OF ISSUE



SECOND SUBMISSION

THE SECOND SUBMISSION OF PROOFS WAS MADE TO SHOW THE CORRECTED COLORS AND ADDED THE 15¢ VALUE. NOTE THE 10¢ WHICH HAS THE SAME DOTS IN THE LEFT 10 AS THE UR STAMP IN THE BLOCK OF 4. THEREFORE THE SECOND PROOF SET ALSO CAME FROM THE TRIAL BLOCKS AND NOT FROM THE PLATES.

1-1220

NEWFOUNDLAND

ESSAYS AND PROOFS

1910

WHITEHEAD MORRIS CO.

ON WOVE .00600

MAC DONALD & SONS

ENGRAVED

PLATE PROOFS.



LITHOGRAPHIC TRANSFER STRIPS - FOR PREPARING PRINTING PLATES

THESE WERE MADE FROM AN ENGRAVED

STRIP PLATE.

12

NEWFOUNDLAND

ESSAYS AND PROOFS

1910

WHITEHEAD MORRIS CO.

MAC DONALD & SONS

ON CARDBOARD .0100

ENGRAVED



THESE WERE PROBABLY PART OF A TRANSFER PLATE MADE BY A ROLLER FROM THE DIE. IT WAS PROBABLY 10 STAMPS WIDE. NOTE CORNER MARKS, THIS MUST BE THE START OF THE PLATE FOR THE ENGRAVED ISSUE. NOTE INCOMPLETE SHADING OVER HEAD AND TO THE LEFT OF WHISKERS.



THIS PROOF WAS THE SAME COLOR AS THE STAMP ABOVE. THE CORNER MARK AT L L INDICATES IT CAME FROM THE SAME STRIP. THE RED INK EVIDENTLY CHANGED COLOR IN A SULPHUR ATMOSPHERE. THIS IS THE SAME RED INK THAT WAS USED ON THE SECOND PROOFS OF THE 10¢.

NEWFOUNDLAND

ESSAYS AND PROOFS

1910

WHITEHEAD MORRIS CO.

ON WOVE .00525

LITHOGRAPHED

GUMMED

PLATE PROOFS

IN COLOR OF ISSUE



TYPE 11

IT IS BELEIVED THAT THE TRUE PLATE PROOFS WERE PRINTED ON THE THICKER PAPER TO DISTINGUISH THEM FROM THE PRESENTATION PROOFS. THIS PAIR OF PLATE PROOFS THE 3¢ ON .00525 AND THE 6¢ ON .0045 WOVE PAPER PROVE THAT THESE PROOFS CAME FROM THE PLATES AND WERE NOT FROM THE BLOCKS OF 4..

41

1-1240

NEWFOUNDLAND

WHITEHEAD MORRIS CO.,

ESSAYS AND PROOFS

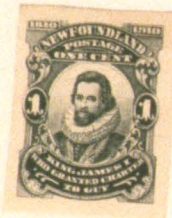
ON WOVE .00525

LITHOGRAPHED

1910

GUMMED

PLATE PROOFS IN COLOR OF ISSUE



THE 6¢ 19 TYPE II AND THE 12¢ ON ISSUE PAPER IS INCLUDED TO COMPLETE THE SET. THE 6¢ IS ON .0045 WATERMARKED PAPER.

34

NEWFOUNDLAND

WHITEHEAD MORRIS CO.

ESSAYS AND PROOFS

ON WOVE .0045, GUM

LITHOGRAPHED

1910

WATERMARKED

PLATE PROOFS IN COLOR OF ISSUE

THIS IS THE ONLY PLATE PROOF APPEARING ON WATERMARKED PAPER.



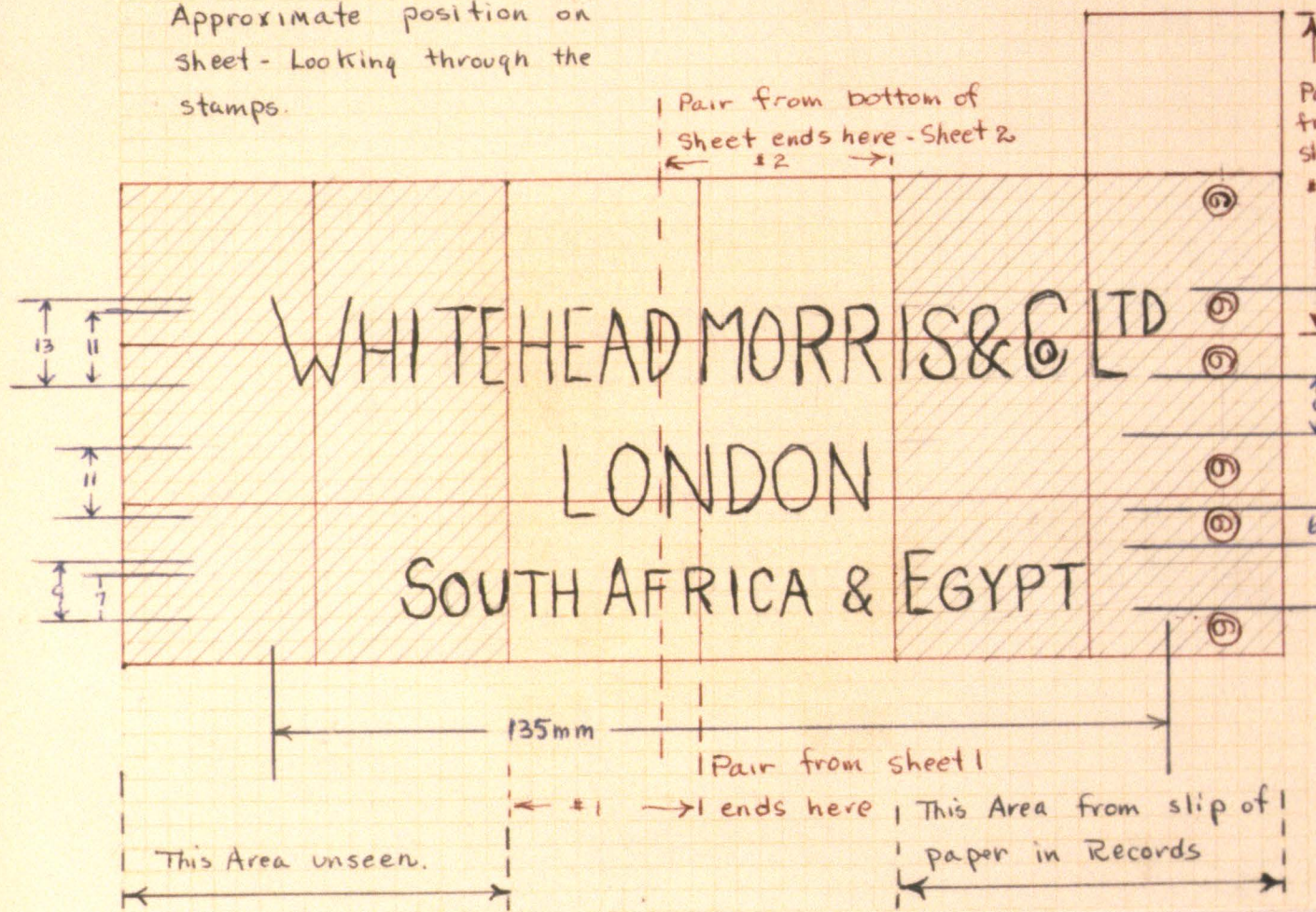
SHEET 1



SHEET 2

THESE PAIRS AND A PIECE OF FOOLSCAP PROVE THE WATERMARK ON TYPE II PR
THEY ALSO PROVE THAT TWO SHEETS WERE PRINTED.

Approximate position on
sheet - Looking through the
stamps.



1-1270

NEWFOUNDLAND

WHITEHEAD MORRIS CO.

ESSAYS AND PROOFS

LITHOGRAPHED

1910

ON WOVE .00525, GUMMED

PLATE PROOFS IN COLOR OF ISSUE.



40

1-1280

NEWFOUNDLAND

WHITEHEAD MORRIS CO.
LITHOGRAPHED, IMPERFORATE
ON WOVE .0035, GUMMED

ESSAYS AND PROOFS

1910

ISSUE COLORS ON ISSUE PAPER



THE 6¢ AND 12¢ ARE THE ONLY LITHOGRAPHED STAMPS TO APPEAR ON ISSUE PAPER IMPERFORATE. THE 6¢ IS TYPE II. PERHAPS THESE ARE FROM BLOCKS OF 4 PROOFS OR FROM THE PLATE. AT THE MOMENT THIS IS NOT STATEABLE.

32

NEWFOUNDLAND

ESSAYS AND PROOFS

1910

WHITEHEAD MORRIS CO

LITHOGRAPHED, ISSUED STAMPS

OVERPRINTED SPECIMEN



THESE STAMPS ARE BELIEVED OVERPRINTED BY THE BRITISH SOUTH AFRICA COMPANY UPON ENTRANCE OF SOUTH AFRICA INTO THE U.P.U.

66

NEWFOUNDLAND

SALE

19231 27

r. maresch & son
AUCTIONS LIMITED

128 130.00 LOT 380

Per 117 Tot 117 \$16

128 / 140



NEWFOUNDLAND

Corre. Neune Anglais.



33 Stamps
arrived
30 Nov 19
\$2.14

1-1285

NEWFOUNDLAND

ESSAYS AND PROOFS

1910

WHITEHEAD MORRIS CO.

MACDONALD & SONS.

ON WOVE .0035

ENGRAVED



THESE DIE PROOFS ARE ON THE SAME PAPER AS THE 8¢
ON THE NEXT PAGE. THEY ARE IN THE SAME
CONDITION AS THE BLACK PROOFS WHICH
FOLLOW

1-1287

NEWFOUNDLAND

ESSAYS AND PROOFS

1910

WHITEHEAD MORRIS CO.
MACDONALD & SONS

ON WOVE.0035

ENGRAVED

LARGE DIE PROOFS



THIS WAS PREPARED FROM DIES IN THE SAME STATE
AS THOSE USED FOR THE BLACK PROOFS. SEE NOTE ON
THE EIGHT CENT BLACK DIE PROOF.

1-12-90

NEWFOUNDLAND

ESSAYS AND PROOFS

1910

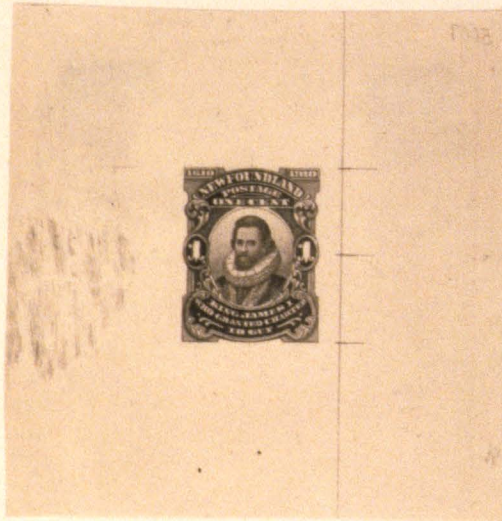
WHITEHEAD MORRIS CO

MACDONALD & SONS

ON WOVE .0055

WATERMARKED

LARGE DIE PROOFS



NOTE REVERSED NUMBER 5007



THIS SET OF DIE PROOFS WAS PRODUCED AFTER THE PLATES HAD BEEN COMPLETED. SEVERAL SETS OF THESE PROOFS WERE CUT TO STAMP SIZE AND PASTED ON PRESENTATION SHEETS. THEY WERE GIVEN TO MEMBERS OF THE GOVERNMENT TO SHOW DESIGNS OF THIS ISSUE.

1-1300

NEWFOUNDLAND

WHITEHEAD MORRIS CO.

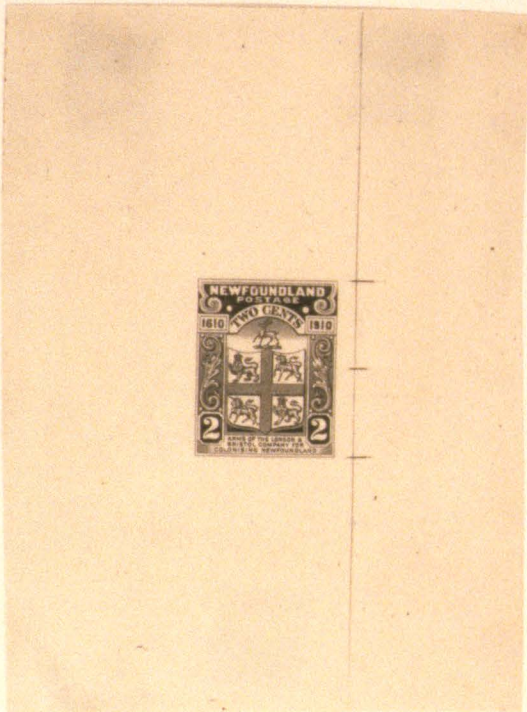
ESSAYS AND PROOFS

MACDONALD & SONS

1910

ON WOVE .0055, WATERMARKED

LARGE DIE PROOFS



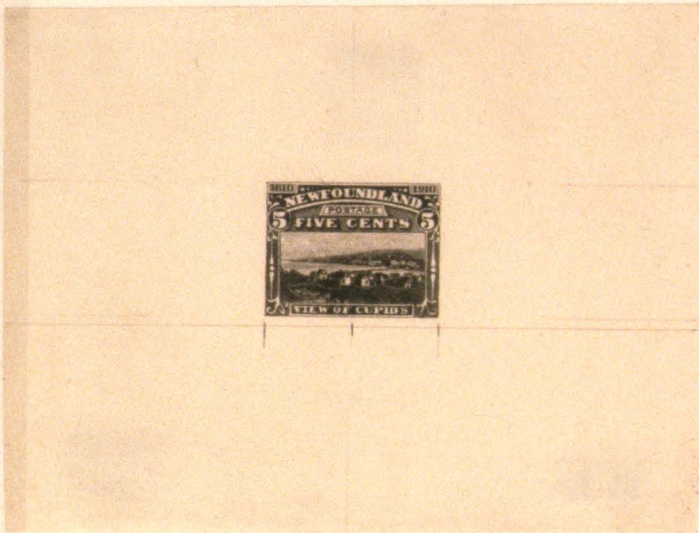
12

1-210

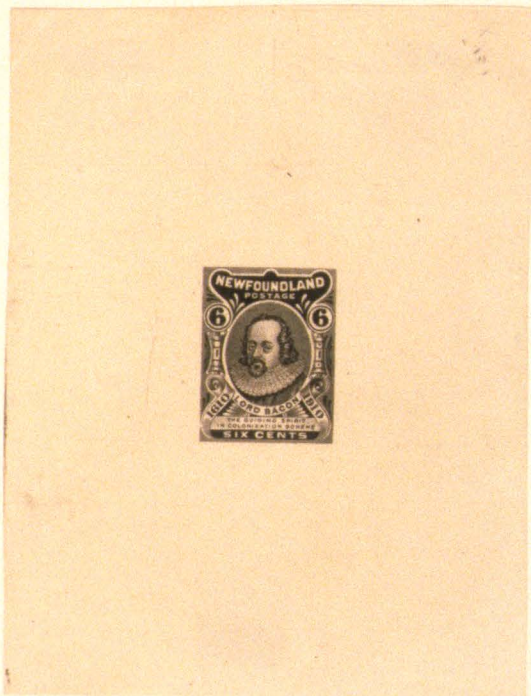
NEWFOUNDLAND

WHITEHEAD MORRIS CO.
MACDONALD & SONS
ON WOVE .0055, WATERMARKED

ESSAYS AND PROOFS
1910
LARGE DIE PROOFS



NOTE M/S BURNT SIENNA CHROME



THIS IS A DIE PROOF FOR TYPE
IT IS NOT LIKE THE PLATE PROOFS
OR ISSUED STAMPS. COMPARE THE
VERTICAL SHADING IN THE TABLET
THIS PERMITS A BELIEF THAT THE
PLATE WAS CORRECTED TO PRODUCE
THE STAMPS AND THEN THE DIE
CHANGED.

13

1-1320

NEWFOUNDLAND

WHITEHEAD MORRIS CO.

ESSAYS AND PROOFS

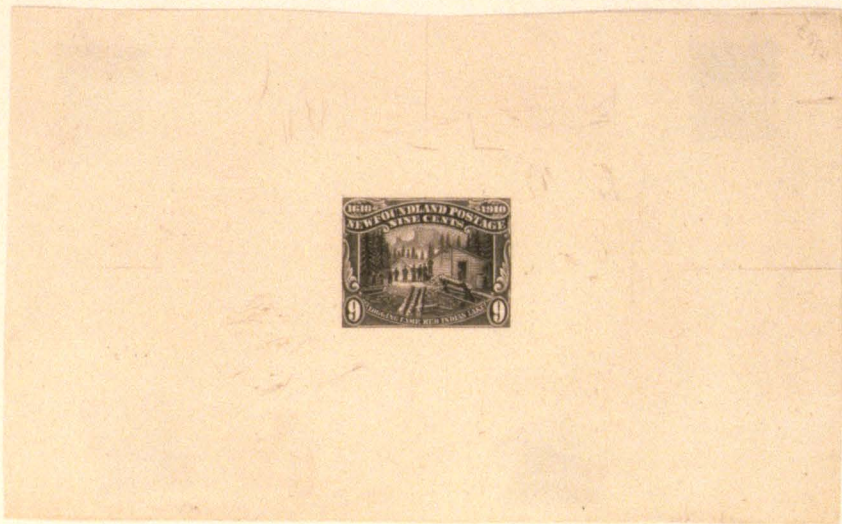
ON WOVE .0055

MACDONALD & SONS

1910

WATERMARKED

LARGE DIE PROOFS



NOTE REVERSED # 4903 AND SHADING IN LEFT CLOUD.



NOTE REVERSED NUMBER 4927 AND SHADING IN

14

NEWFOUNDLAND

WHITEHEAD MORRIS CO.

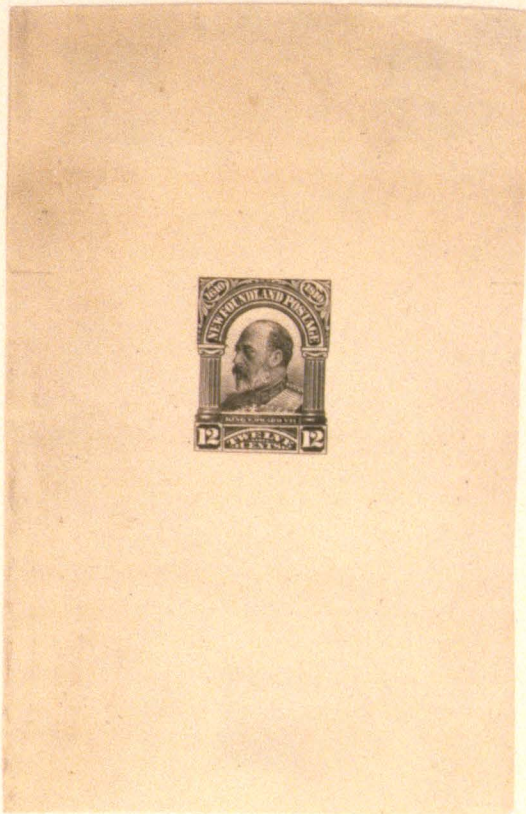
ESSAYS AND PROOFS

MACDONALD & SONS

1910

ON WOVE .0055, WATERMARKED.

LARGE DIE PROOFS



12

1-1340

NEWFOUNDLAND

1910

WHITEHEAD MORRIS CO.

ON WOVE .0055

MC DONALD & SONS

DIE PROOFS

ENGRAVED



HISTORY IN MINIATURE.

Story of Newfoundland Told in Set of Eleven Stamps.

Newfoundland, the oldest British Dominion, is this week celebrating the tercentenary of the foundation of the first permanent settlement in the country.

To paint the history of the Dominion within the small compass of a series of postage stamps has been one of the means chosen to make the occasion memorable.

One of the first-issued sets of these unique stamps constitute, in the delicate tracing and fine colourings of the engraver's art, the smallest and most dainty history-book on record, covering the three hundred years from 1610 to 1910.

There are eleven of the stamps in all, ranging in value from one to fifteen cents, each carrying a different picture in varying colours.



THE PREVIOUS OWNER STATED THAT THESE HAD BEEN REMOVED FROM ONE OF THE PRESENTATION CARDS

43

NEWFOUNDLAND

ESSAYS AND PROOFS

1911

WHITEHEAD MORRIS CO.

ON WOVE .00500

A. ALEXANDER & SONS

TRIMMED DIE PROOFS

ENGRAVED



NO SHADING LEFT HAND CLOUD

NO SHADING SKY OR RIVER

ON WOVE .00600



BACKGROUND CLEAR

NO SHADING IN LAKE

NO SHADING ABOVE HEAD

WHERE Z HAS BEEN

CORRECTED. 6 SOLID

THESE WERE PROBABLY TRIMMED DIE PROOFS MADE FOR

THE ENGRAVED ISSUE IN LATE 1910.

1-1370

NEWFOUNDLAND

ESSAYS AND PROOFS

1911

WHITEHEAD MORRIS CO.

ON WOVE .00350

A. ALEXANDER & SONS

ENGRAVED

ISSUED STAMPS



PLATE PROOFS

COLOR OF ISSUE



NOTE OFFSET ON THIS COLOR

TRIAL COLOR



NOTE "COLOR" PAPER IS ORANGE UNDER ULTRA-VIOLET
THERE IS NO SHADING IN THE LOWER TABLET. SHADING
AROUND "NEWFOUNDLAND" AND "6" IS LINED NOT SOLID.

42

1-1370

NEWFOUNDLAND

ESSAYS AND PROOFS

1911

WHITEHEAD MORRIS CO
ALEXANDER & SONS

TRIAL COLOR PROOFS

ON WOVE .0035

ENGRAVED



THESE PARTIALLY INKED PLATES MAY BE PRINTERS WASTE. ON THE OTHER HAND IF ONLY A FEW TRIAL COLORS WERE WANTED A PARTIALINKING OF THE PLATE WOULD PRODUCE THE REQUIRED NUMBER. THE NOTES ON THE BOTTOM OF THE SHEETS SUCH AS: **LESS** BLACK OR COLOR, INDICATE THE 'TRIAL COLOR' THEORY IS CORRECT.

98

NEWFOUNDLAND

ESSAYS AND PROOFS

1911

WHITEHEAD MORRIS CO.

ON WOVE .00350

A. ALEXANDER & SONS

ENGRAVED

ISSUED STAMPS



PLATE PROOFS

IN COLOR OF ISSUE



TRIAL COLOR



PRINTER-S WASTE FROM TRIAL
COLORS. NOTE GREENISH COLOR.

93

L1400

NEWFOUNDLAND

ESSAYS AND PROOFS

1911

WHITEHEAD MORRIS CO.

ON WOVE .00350

A. ALEXANDER

ENGRAVED

ISSUED STAMPS



PLATE PROOFS

IN COLOR OF ISSUE



TRIAL COLOR



THE PAIR LABELED "PRINTER'S WASTE" FITS DIRECTLY ABOVE THE FULL COLOR PAIR. THIS WOULD INDICATE THAT ONLY THE BOTTOM ROW WAS FULLY INKED. THIS WAS PROBABLY DONE AS ONLY A FEW "TRIAL. COLORS WERE NEEDED.

44

NEWFOUNDLAND

ESSAYS AND PROOFS

1911

WHITEHEAD MORRIS CO.

ON WOVE .00350

A. ALEXANDER & SONS

ENGRAVED

ISSUED STAMPS



PLATE PROOFS

IN COLOR OF ISSUE



TRIAL COLOR



95

1-3420

NEWFOUNDLAND

ESSAYS AND PROOFS

1911

WHITEHEAD MORRIS CO.

ON WOVE .0035

ALEXANDER & SONS

PLATE PROOFS

ENGRAVED



WETHER THESE ARE PLATE PROOFS OR 'RECORD SHEETS' IS A MOOT QUESTION. THE 12¢ AND 15¢ ALSO EXIST THUS. THE 9¢ AND 15¢ HAVE BEEN SEEN ON WATERMARK PAPER. THE 8¢ AND 10¢ ALSO EXIST IMPERFORATE AND GUMMED.

91

1-1430

NEWFOUNDLAND

ESSAYS AND PROOFS

1911

WHITEHEAD MORRIS CO

ON WOVE .0035

ALEXANDER & SONS

TRIAL COLOR PROOFS

ENGRAVED



14

1-1440

NEWFOUNDLAND

ESSAYS AND PROOFS

1911

WHITEHEAD MORRIS CO.

ON WOVE .00350

A. ALEXANDER & SONS

ISSUED STAMPS

ENGRAVED



PLATE PROOFS
IN COLOR OF ISSUE



TRIAL COLOR



WITH GUM

THESE TWO PAIRS MAY BE FROM THE SAME SHEET THOUGH COLORS VARY.



NOTE OFFSET ON BACK

46

1-1470

NEWFOUNDLAND

ESSAYS AND PROOFS

1911

ISSUED STAMPS



PLATE PROOFS

IN COLOR OF ISSUE

WHITEHEAD MORRIS CO.
A. ALEXANDER & SONS
ON WOVE .00350
ENGRAVED

TRIAL COLOR



PRINTER'S WASTE, SHOWING
FULLY INKED BOTTOM ROW.

47

1910
NEWFOUNDLAND

Whitehead Morris Co

PLATE PROOFS
Lithographed

ON WOVE .00450
GUMMED
WATERMARKED



Type I

1 0062

a02 A

1910

NEWFOUNDLAND

Whitehead Morris Co.

PLATE PROOFS
Lithographed

ON WOVE .00525
GUMMED
UNWATERMARKED



64

1 0061

487-92

NEWFOUNDLAND

ESSAYS AND PROOFS

1910

WHITEHEAD MORRIS CO.

ON CARDBOARD .0125

MAC DONALD & SONS

ENGRAVED

ESSAYS



VIGNETTE OF 1¢

THIS ENGRAVING LOOKS VERY

MUCH LIKE DE LA RUE WORK

VIGNETTES PROBABLY ALSO EXIST OF THE
3¢ (GUY), 6¢ (BACON), 12¢ (EDWARD VII)
AND 15¢ (GEO. V)

NEWFOUNDLAND

ESSAYS AND PROOFS

1910

WHITEHEAD MORRIS CO.

ON CARDBOARD .0125

MAC DONALD & SONS

ENGRAVED

LARGE DIE PROOFS



ENGRAVED BY MAC DONALD AND PRINTED AND PERFORATED BY
WHITEHEAD MORRIS. THESE ARE PROBABLY THE ORIGINAL
TRIAL COLOR PROOFS, THE SAME COLOR WAS USED ON THE
12¢ PROOFS.

NEWFOUNDLAND

ESSAYS AND PROOFS

1910

WHITEHEAD MORRIS CO.

ON CARD BOARD .0125

MAC DONALD & SONS

ENGRAVED

LARGE DIE PROOFS

TRIAL COLORS



PROBABLY TRIAL COLORS FOR THE LITHOGRAPH ISSUE

NEWFOUNDLAND

ESSAYS AND PROOFS

1910

LARGE DIE PROOFS

WHITEHEAD MORRIS CO.

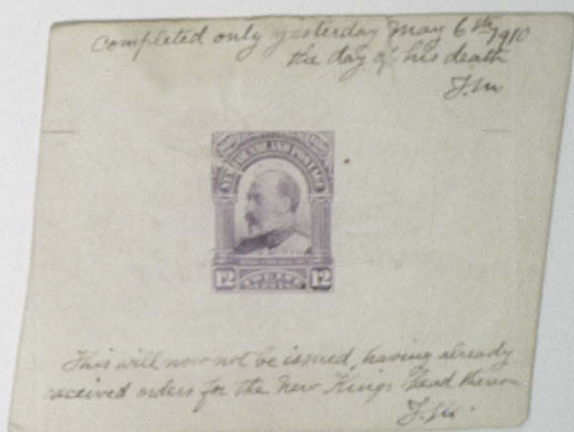
MAC DONALD & SONS

ENGRAVED ON CARDBOARD .0025



THIS LIGHT BLUE COLOR WAS
PROBABLY WITH THE ORIGINAL
DIE PROOFS AS A TRIAL COLOR.

THIS DIE WAS FINISHED ON THE DAY
OF THE DEATH OF KING EDWARD VII.
DESPITE THE NOTE ON THE PROOF,
THE STAMP WAS ISSUED. THE 15¢ VALUE
HAD THE VIGNETTE OF KING GEORGE V
HIS SUCCESSOR.



NEWFOUNDLAND

ESSAYS AND PROOFS

1910

NEWFOUNDLAND ON CARDBOARD .0100

WHITEHEAD MORRIS CO.

MAC DONALD & SONS

ENGRAVED

ESSAYS AND PROOFS



WHITEHEAD MORRIS CO.

MAC DONALD & SONS

ON CARDBOARD .0100

ENGRAVED



THESE WERE PROBABLY PART OF A TRANSFER PLATE MADE BY A ROLLER FROM THE DIE. IT WAS PROBABLY 10 STAMPS WIDE. NOTE CORNER MARKS, THIS MUST BE THE START OF THE PLATE FOR THE ENGRAVED ISSUE. NOTE INCOMPLETE SHADING OVER HEAD AND TO THE LEFT OF WHISKERS.

THESE WERE PROBABLY PART OF A TRANSFER PLATE MADE BY A ROLLER FROM THE DIE. IT WAS PROBABLY 10 STAMPS WIDE. NOTE CORNER MARKS, THIS MUST BE THE START OF THE PLATE FOR THE ENGRAVED ISSUE. NOTE INCOMPLETE SHADING OVER HEAD AND TO THE LEFT OF WHISKERS.



THIS PROOF WAS THE SAME COLOR AS THE STAMP ABOVE. THE CORNER MARK AT L L INDICATES IT CAME FROM THE SAME STRIP. THE RED INK EVIDENTLY CHANGED COLOR IN A SULPHUR ATMOSPHERE. THIS IS THE SAME RED INK THAT WAS USED ON THE SECOND PROOFS OF THE 10¢.

PROOFS OF THE 10¢.

NEWFOUNDLAND

ESSAYS AND PROOFS

1910

WHITEHEAD MORRIS CO.

MAC DONALD & SONS

ON CARDBOARD .0100

ENGRAVED



THESE WERE PROBABLY PART OF A TRANSFER PLATE MADE BY A ROLLER FROM THE DIE. IT WAS PROBABLY 10 STAMPS WIDE. NOTE CORNER MARKS, THIS MUST BE THE START OF THE PLATE FOR THE ENGRAVED ISSUE. NOTE INCOMPLETE SHADING OVER HEAD AND TO THE LEFT OF WHISKERS.



THIS PROOF WAS THE SAME COLOR AS THE STAMP ABOVE. THE CORNER MARK AT L L INDICATES IT CAME FROM THE SAME STRIP. THE RED INK EVIDENTLY CHANGED COLOR IN A SULPHUR ATMOSPHERE. THIS IS THE SAME RED INK THAT WAS USED ON THE SECOND PROOFS OF THE 10¢.

NEWFOUNDLAND

ESSAYS AND PROOFS

1910

WHITEHEAD MORRIS CO.

ON CREAM WOVE .0085

MAC DONALD & SONS

LARGE DIE PROOFS

ENGRAVED



THIS DIE IS 10.2CM X 7.8CM (LARGER THAN PERKINS, BACON)
AS THESE DIE PROOFS WERE PREPARED AFTER THE DEATH OF EDWARD VII,
THEY WERE PROBABLY SUBMITTED FOR APPROVAL TO KING GEORGE V IN MAY
1910. NOTE ABSCENCE OF MARKS AT SIDES WHICH SHOW ON BLACK PRINTS,
PROBABLY MADE BEFORE HARDENING.

NEWFOUNDLAND

ESSAYS AND PROOFS

1910

WHITEHEAD MORRIS CO.

ON WOVE .00600

MAC DONALD & SONS

ENGRAVED

PLATE PROOFS.



LITHOGRAPHIC TRANSFER STRIPS - FOR PREPARING PRINTING PLATES

THESE WERE MADE FROM AN ENGRAVED

STRIP PLATE.

NEWFOUNDLAND

ESSAYS AND PROOFS

WHITEHEAD MORRIS CO.

MAC DONALD & SONS

LITHOGRAPHED ON WOVE .00350

1910

SMALL DIE PROOFS



ESSAY - NOTE LACK
OF SHADING IN
CROSS OF 2¢

THESE ARE IMPRESSIONS
FROM A "MASTER" LITHO
STONE TO PROOVE THE
ENGRAVING. THE 2¢
& 5¢ STAMPS WERE NOT
USED AS A PLATE WAS
MADE FOR TRANSFER.

NEWFOUNDLAND

ESSAYS AND PROOFS

1910

WHITEHEAD MORRIS CO.

PERFORATED

MAC DONALD & SONS

COLOR PROOFS



THESE ARE SOME OF THE DISTINCTIVE COLORS
PRINTED OF THE FIRST SUBMISSION OF PROOFS.

NEWFOUNDLAND

ESSAYS AND PROOFS

1910

WHITEHEAD MORRIS CO.

ON WOVE .00350

LITHOGRAPHED

GUMMED

PLATE PROOFS

IN COLOR OF ISSUE



SECOND SUBMISSION



NEWFOUNDLAND

ESSAYS AND PROOFS

1910

PLATE PROOFS

IN COLORS OF ISSUE

WHITEHEAD MORRIS CO.

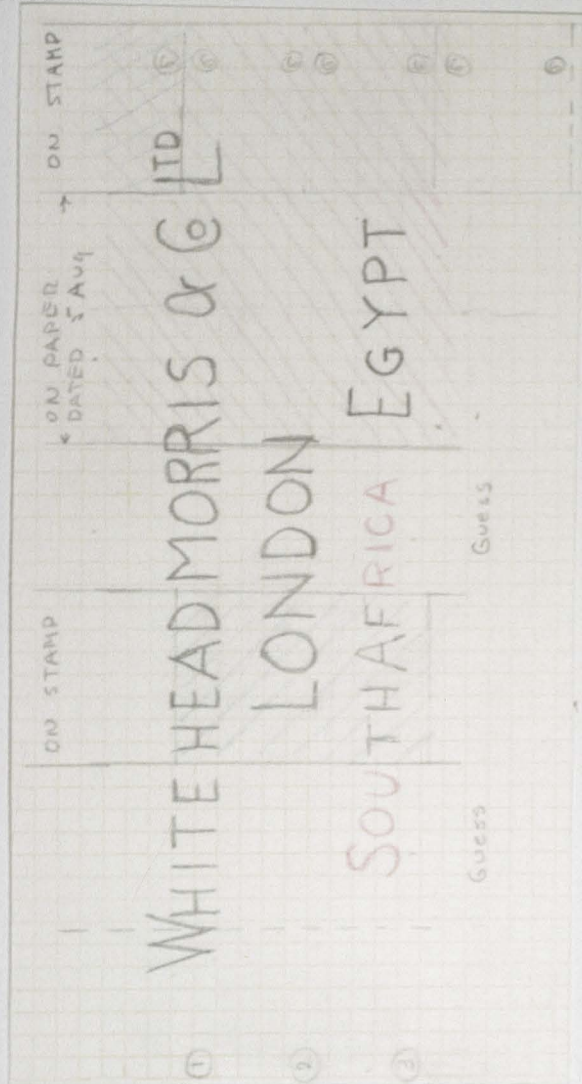
LITHOGRAPHED

ON GUMMED WOVE .00450

WATERMARKED

TOP OF STAMP SHEET

WATERMARK READS UP LOOKING THRU STAMP.



A NEW DISCOVERY AMONG THE
LITHOGRAPHED PLATE PROOFS
ON WATERMARKED PAPER.



TYPE II - BACKGROUND

VERTICALLY LINED.

ALL SANS SERIF CAPS. THE SHADED AREAS ARE KNOWN.

NEWFOUNDLAND

ESSAYS AND PROOFS

1911

WHITEHEAD MORRIS CO.

ON WOVE .00500

A. ALEXANDER & SONS

TRIMMED DIE PROOFS

ENGRAVED



NO SHADING LEFT HAND CLOUD

NO SHADING SKY OR RIVER

ON WOVE .00600



BACKGROUND CLEAR

NO SHADING IN LAKE

NO SHADING ABOVE HEAD

WHERE Z HAS BEEN

CORRECTED. 6 SOLID

THESE WERE PROBABLY TRIMMED DIE PROOFS MADE FOR
THE ENGRAVED ISSUE IN LATE 1910.

NEWFOUNDLAND

ESSAYS AND PROOFS

1911

WHITEHEAD MORRIS CO.

ON WOVE .00350

A. ALEXANDER & SONS

ENGRAVED

ISSUED STAMPS



PLATE PROOFS

COLOR OF ISSUE



NOTE OFFSET ON THIS COLOR

TRIAL COLOR



NOTE "COLOR" PAPER IS ORANGE UNDER ULTRA-VIOLET
THERE IS NO SHADING IN THE LOWER TABLET. SHADING
AROUND "NEWFOUNDLAND" AND "6" IS LINED NOT SOLID.

NEWFOUNDLAND

ESSAYS AND PROOFS

1911

WHITEHEAD MORRIS CO.

ON WOVE .00350

A. ALEXANDER & SONS

ENGRAVED

ISSUED STAMPS



PLATE PROOFS

IN COLOR OF ISSUE



TRIAL COLOR



PRINTER-S WASTE FROM TRIAL
COLORS. NOTE GREENISH COLOR.

NEWFOUNDLAND

ESSAYS AND PROOFS

1911

WHITEHEAD MORRIS CO.

ON WOVE .00350

A. ALEXANDER

ENGRAVED

ISSUED STAMPS



PLATE PROOFS

IN COLOR OF ISSUE



TRIAL COLOR



THE PAIR LABELED "PRINTER'S WASTE" FITS DIRECTLY ABOVE THE FULL COLOR PAIR. THIS WOULD INDICATE THAT ONLY THE BOTTOM ROW WAS FULLY INKED. THIS WAS PROBABLY DONE AS ONLY A FEW "TRIAL COLORS WERE NEEDED.

NEWFOUNDLAND

ESSAYS AND PROOFS

1911

WHITEHEAD MORRIS CO.

ON WOVE .00350

A. ALEXANDER & SONS

ENGRAVED

ISSUED STAMPS



PLATE PROOFS

IN COLOR OF ISSUE



TRIAL COLOR



NEWFOUNDLAND

ESSAYS AND PROOFS

1911

WHITEHEAD MORRIS CO.

ON WOVE .00350

A. ALEXANDER & SONS

ISSUED STAMPS

ENGRAVED



PLATE PROOFS

IN COLOR OF ISSUE



TRIAL COLOR



THESE TWO PAIRS MAY BE FROM THE SAME
SHEET THOUGH COLORS VARY.



NOYE OFFSET ON BACK

NEWFOUNDLAND

ESSAYS AND PROOFS

1911

ISSUED STAMPS



PLATE PROOFS

IN COLOR OF ISSUE

WHITEHEAD MORRIS CO.

A. ALEXANDER & SONS

ON WOVE .00350

ENGRAVED

TRIAL COLOR



PRINTER'S WASTE, SHOWING
FULLY INKED BOTTOM ROW.

1910
NEWFOUNDLAND

Whitehead Morris Co.

PLATE PROOFS
Lithographed

ON WOVE .00300
PERFORATED 12 X 12
GUMMED



1 0059

87-96

1910
NEWFOUNDLAND

Whitehead Morris Co

PLATE PROOFS
Lithographed

ON WOVE .00525

GUMMED



Type II - Paper .004C



Paper .00370



#87-96

1 0060

1910
NEWFOUNDLAND

Whitehead Morris Co.

PLATE PROOFS
Lithographed

ON WOVE .00525
GUMMED
UNWATERMARKED



1 0061

487-92

1910
NEWFOUNDLAND

Whitehead Morris Co.

PLATE PROOFS
Lithographed

ON WOVE .00450
GUMMED
WATERMARKED



Type I

1 0062

492 A

1910
NEWFOUNDLAND

Whitehead Morris Co.

PLATE PROOFS
Lithographed

ON WOVE .00525
GUMMED
UNWATERMARKED



1 0063

#13-97

1910
NEWFOUNDLAND

Whitehead Morris Co.

PLATE PROOFS
Lithographed

ON WOVE .00350
GUMMED
UNWATERMARKED



1 0064

96

1911

NEWFOUNDLAND

*A. Alexander & Sons
MacDonald & Sons*

TRIMMED DIE PROOFS

ON WOVE .00600

WHITE GLAZED



*A curious proof unfinished
in spots which might have
been a trial run of a
transfer roll or an experiment
in a double transfer roll*

1 0065

\pm 100 - 101

1911

NEWFOUNDLAND

*A. Alexander & Sons
MacDonald & Sons*

LARGE DIE PROOFS

ON WOVE .0085
CREAM



15.2 Cm x 7.8 Cm. Larger than Perkins Room

1 0066

103

1911
NEWFOUNDLAND

A. Alexander & Sons
MacDonald & Sons

PLATE PROOFS

ON WOVE .00350
YELLOWISH



1 0067

98-103

NEWFOUNDLAND

1610.

1910.



Issue of Newfoundland Stamps to commemorate the 300th anniversary of the earliest settlement in the British Empire made in Conception Bay Newfoundland in June, 1610.

With the Compliments of the Government of Newfoundland.

E. A. Morris

Prime Minister.

THIS FORM TO BE RETURNED TO OFFICE ON COMPLETION OF ORDER.

ORDER FORM.

EXPORT.

Order No. 4502

Description of Work:

N. Y. Land Postage Stamps



1 Cent	—	3,000,000
2 Cent	—	5,000,000
3 "	—	50,000
4 "	—	50,000
5 "	—	500,000
6 "	—	10,000
8 "	—	10,000
9 "	—	10,000
10 "	—	10,000
12 "	—	10,000
		<hr/>
		8,650,000
		<hr/>
15 "	—	10,000
		<hr/>
		8,660,000

100 Stamps on each sheet

~~Made 100 sheets of each~~

In addition to above 2000 stamps of each denomination will be required made up in sets & enclosed in a small envelope

12 Cent.	85 Pks	=	170 =	161 Good
			<u>10</u>	19 Spoilt
			<u>180</u>	100 G.M.V.
9 Cent.	100 90 Pks.	=	180 180	<u>160</u> = 180 G.M.V.
				<u>20</u>
4 Cent.	300 Pks	=	600	<u>575</u> - 600 G.M.V.
				<u>25</u>
8 Cent.	90 Pks	=	180	<u>160</u> G.M.V.
				<u>20</u>
10 "	90 "	=	180	<u>161</u> G.M.V.
				<u>19</u>
3 "	90 45 "	=	180	<u>576</u> G.M.V.
				<u>25</u>
3 "	300 "	=	600	
1 "	280 "	=	560	<u>268</u> G.M.V.
				<u>12</u>
#2 "	280 "	=	560 on 4/2	<u>280</u> G.M.V.
"Cent-	960 "	=	1920	
5 Cents	280 "	=	560	
" "	50 "	=	100	
15 "	90 "	=	180	<u>169</u> G.M.V.
				<u>11</u>
6 "	90 "	=	180	<u>173</u> (2 nd lot.)
				<u>173</u> (2 nd lot.)
4 "	5 "	=	10	

1st Lot. 2nd Lot. Rejected
 173

Ed to
 949 Good
 11 Spoilt
 303 Good
 27 Spoilt G.M.V.
 167 Good
 33 Spoilt
 14 Spoilt Spoilt in Rejected

For 1 Run 480 sheets = 48000 slants.

size $13\frac{1}{4} \times 10\frac{3}{4}$

We took price of plus 5%.

We wanted for a 5 years Contract = 25 Millions

Corrums 4/1
Gunn 3/11

size of page $12\frac{3}{4} \times 10\frac{3}{8}$

size of work. $11\frac{1}{4} \times 8\frac{7}{8}$

N.Y. Law Stamps

We shall require for exhibition
not less than 50 sheets of
each stamp - 100 in = 5000 stamps
& suggest you print say 100 sheets
of each.

Ring



4202



Newfoundland Stamp

Proofs required on gummed paper which you propose to use -

King Ed VII Stamp to be 100 up

other Stamps 4 up



all perforated

- | | | | | |
|--------|---|------------------|-------|-----------------------------------|
| 1 Cent | - | Must be distinct | Green | } See Set of gold stamps attached |
| 2 " | - | " " " | Red | |
| 3 " | - | " " " | | |
| 4 " | - | " " " | | |
| 5 " | - | " " " | Blue | |
| 6 " | - | | | |
| 8 " | - | | | |
| 9 " | - | | | |
| 10 " | - | | | |
| 12 " | - | | | |
| 15 " | - | | | |

the other colours are left to us - the colour of each stamp to be as distinct as possible

You will notice some colours suit those stamps with views better than others - see impressions attached

1 Cent Stamp Plate will be ready tomorrow

12 " " 10 up " Monday

15 " " do not wait for

Complete proofs wanted by Thursday next the 26th latest

THIS FORM TO BE RETURNED TO OFFICE ON COMPLETION OF ORDER.

EXPORT.

ORDER FORM.

Order No. 4502



Description of Work:

N.Z. Land Patent Stamps

When wanted 1

Compositors
Alterations (if more than one see over)
Author's Corrections
Proofs
" 2nd
Machining	M.	5 - -
Litho	80	
Binding (labour only)		
Ruling		
" 2nd proof		
" 3rd proof		
Folding		
Perforating	1,917,300	cut	8	63	18 2
Numbering		
Warehouse	12	0 0
Sundries		
Paper	89 Rms.	157	Qrs.	75	14 0
Quality, Weight & Cost of Paper per Ream.	} 5-18-		Total charge	£	206

Date received by Warehouse 1

COMP. MACHINE. RULER. BINDER

2 Cents
 Aug. 8th

RMS

2 Cents	- 2405 lbs	5
2 "	2913 "	6
2 "	2408	5
2 "	487	1
2 "	2388	5
2 "	489 "	1
2 "	961	2
2 "	966	2

2 Cents	449	1 Pm
2 "	480	1 "
2 "	489	1 "
2 "	2423	5 "
"	486	1
"	480	1
2 "	487	1
2 "	7042	3
2 "	481	1
2 "	2429 - 5 Pm	1
2 "	1458 - 3 Pm	1
2 "	<u>480 - 1 "</u>	1

Aug 5th

1 Cent. 485 lbs

Aug 8th

RMS

1 Cent.	1915 lbs	4
1 "	971 "	2
1 "	966 "	2
1 "	489 "	1
1 "	480 "	1

4821
 485

 5306

1 Cent.	300 lbs	1
1 "	1500 "	3
1 "	2000 "	4
1 "	1000	2
1 "	1500	3
1 "	500	1
1 "	1500	3
1 "	500	1
1 "	1000	2

10,000
264

 10-264

5 Cent

RMS

over for
 5 Cents

Cents

1 - 8
 5 - 17/21
 5 - 23/27
 11 - 30/40
 6 - 65/70
 4 - 80/86
 10 - 87/96

42

4250
 22000

200000
 229 x 4

Run
 5-Cents 1500 fths. 3
 5 " 1000 " 2
 " " 1 9

2500
 500000

Original Card on which Proofs were submitted for Approval.

The order for stamps stipulated that proofs should be submitted on the paper to be used for the stamps, gummed and perforated. The 1c value was to be a definite green, the 2c a definite red, and the 3c a definite blue. Colours for other values were left to the printers. The first proofs, as specified, were duly submitted on this card, but the colours of the 3c, 10c and 15c values were not approved. A second complete set of proofs was submitted on the same card. The colours of the 3c and 10c were changed, but not the 15c, the 1c is a rather more yellowish green, and the 4c a much colder violet. The second set of proofs is imperforate and the colours are those of the issued stamps. On this card most of them were stuck over the corresponding values of the first set, and have been lifted to show both sets. The "S" error on the 6c value was not noticed until after the stamps were printed, and no proofs with the corrected "Z" are known.

Number of stamps sent to St. Johns.

1c	3,000,000.	2c	5,000,000.	3c	50,000.
4c	50,000.	5c	530,000.	6c(A)	10,000.
6c(B)	10,000.	8c	10,000.	9c	10,000.
10c	10,000.	12c	10,000.	15c	10,000.

In addition 5000 sets were printed and placed in small envelopes for sale in London.

4207
 NEWFOUNDLAND STAMPS
 28 JUN 1910
 PENCHURCH STREET

	Stamps	Sheets
✓ one Cent	3,000,000	= 30,000
✓ Two "	5,000,000	= 50,000
✓ Three "	50,000	= 500
✓ Four "	50,000	= 500
✓ Five "	500,000	= 5,000
✓ Six "	10,000	= 100
✓ Eight "	10,000	= 100
✓ Nine "	10,000	= 100
✓ Ten "	10,000	= 100
✓ Twelve ✓	10,000	= 100
✓ Fifteen "	10,000	= 100

50 sheets extra of each denomination to be printed

8,660,000 = 86,600
 ----- 500
 ----- 87,150

All in sheets of 100 stamps each
 Size as 12 Cent Stamp sheet
 Separated "
 Packed between ~~white~~ cardboard
 Packed between white cardboard in
 bundles of 500 - each 100
 divided by slips of paper

A good supply of each wanted
 by July 20th

For colours see inside



"to be more definite in colour"



Many are another colour



15 Cents King George different colour



Newfoundland Postage Stamps

<u>Parcel No.</u>	<u>Contents</u>	<u>How sent</u>
1	100 Sheets 15 Cents	} Postw. 25/7/10
2	500 5 "	
3	100 8 "	
4	500 3 "	
5	100 10 "	
6	100 6 "	
7	500 4 "	
8	500 1 "	
9	500 2 "	
10	100 12 "	
11	100 9 "	
12	100 6 bents (reprinted)	Parcels Post 29/7/10
13	300 2 bents	Parcels Post 6/8/10 via Kewley
14	500 2 "	} Shipment 11/8/10
15	500 2 "	
16	500 2 "	
17	500 1 "	
18	500 1 "	
19	500 1 "	
20	500 1 "	Parcels Post 11/8/10
21	500 500 1 "	} do. 12/8/10
22	500 2 "	
23	} 5/500 1 "	Parcel Post 18/8/10
27		
28/32	} 5/500 2 "	"
33/43	11/500 1 "	} Can be done Aug SS. Catharman
44/54	11/500 2 "	
55/60	6/500 5 "	

Parcel No.	Contents	How Sent
61/64	4 parcels, ^(total 1870) 5 Cent	Shipped Durango S.S. 1/9/10
65/70	6 / 500 - 1 "	
71/76	6 / 500 - 2 "	
77/82	6 / 500 - 2 "	Shipped Siberian 7/9/10
83/86	4 / 500 - 1 "	
87/96	10 / 500 - 1 "	Shipped Sept 14.
97/110	14 / 500 - 2 "	
111/119	9 / 500 - 1	" 28/9/10
129/140	15 / 500 - 2	
120/124	9 / 500 - 1	
144/162	19 / 500 - 2	
163/180	18 / 500	" 6/10/10
181	1 / 200	

18500
9000

34500
17000

18500
9000

Order 3,000,000

Newfld Gov. Stamps. £1.

Page	Sheets	Shipped &c	31	1st Found
17.	500 (@100)		87	500
18.	"		88	"
19.	"	Sent 11 Aug ¹⁰	89	"
20.	"		90	"
4 21	"	" 12 "	91	"
7 22	"		92	"
24	"		93	"
25	"	Posted 18 "	94	"
26	"		95	"
27	"		96	"
33	"		<u>10</u>	
34	"		111	500
35	"		112	"
36	"		113	"
37	"	Sent to Lpool	114	"
38	"	24/8/10	115	"
39	"		116	"
40	"		117	"
41	"		118	"
42	"		119	"
43	"		120	"
76 65 24	"		121	"
66 25	"		122	"
67 26	"		123	"
68 27	"	to Liverpool	124	"
69 28	"	Sept. 1 st 1910.	125	"
70 29	"		126	"
6			127	"
83	"		128 = 18.	
84	"	To Liverpool	59	
85	"	Left 8 th 1910	1	500 sent from to
86 = 4	"		60 = 3000000 stamp	11 th Aug 10
31				

Order 5,000,000

Newfld Gov: Stamps

92

Page	Sheets Shipped re	Page	Sheets Shipped re
14	500 (@ 100)	46	Bt Ford
15	"	129	500
16	"	160	(@ 100)
22	"	32	To L'pool
28	"	161	28 th Sept 10
29	"	162	"
30	"		
31	"	163/180	To R'pool
32	"	18	500
32	"	181	200
44/54 @	"	1	800
9	"	2	Sent prior to 11 th Aug 10
44/54 @	To L'pool 24--"		
11		100	= 5,000,000 Stamps
41	500		
42	"		
73	"		To Liverpool
74	"		
75	"		Left 1 st 1910
76	"		
6			
77	"		
78	"		To Liverpool
79	"		
80	"		Left 8 th 1910
81	"		
82	"		
6			
97/	@		
110	500		To L'pool
14			14 th Sept 10
46	forward		

5000 sheets

Newfld Goo^d Stamps

Q.B.

Pkg Sheets Shipped re
55/60 @ 500 To L'pool
24/8/10

= 3000

61/63 @ 500 To Liverpool
64 300 Left 1st 1910
To complete order.

(Checked)

1500

300

4800

2

Perims

500

5300

Newfld Gov Stamps



14 to ~~pool~~ pool conty

10 Parcels # 87/96 @ 500 sheets \$1.

14 " " 97/110 " 500 " \$2.

24

14/9/10

Handwritten calculations on the right edge:
24
500
120000
120000
1800
1800
120000
120000
1800
1800

Handwritten calculations at the bottom right:
24500
1200000

LITHO SHIPMENTS

VALUE	QUANTITY IN SHEETS												TOTAL
1 ^d	500	-	-	2000	500	2500	5500	3000	2000	5000	9000	-	30,000
2 ^d	500	-	300	1500	500	2500	5500	3000	3000	7000	17000	9200	50,000
3 [¢]	500	-	-	-	-	-	-	-	-	-	-	-	500
4 [¢]	500	-	-	-	-	-	-	-	-	-	-	-	500
5 [¢]	500	-	-	-	-	-	3000	1800	-	-	-	-	(A) 5,300
6 [¢]	100	Reprint 100	-	-	-	-	-	-	-	-	-	-	200
8 [¢]	100	-	-	-	-	-	-	-	-	-	-	-	100
9 [¢]	100	-	-	-	-	-	-	-	-	-	-	-	100
10 [¢]	100	-	-	-	-	-	-	-	-	-	-	-	100
12 [¢]	100	-	-	-	-	-	-	-	-	-	-	-	100
15 [¢]	100	-	-	-	-	-	-	-	-	-	-	-	100

Date	25th July,10 (A)	29th July,10 (4)	6th Aug.10 (4)	11th Aug. (4)	12th Aug. (4)	18th Aug. (4)	24th Aug. (1)	1st Sept. (2)	9th Sept. (3)	14th Sept.	28th Sept.	6th Oct.	87,000 (C)
------	------------------------	------------------------	----------------------	---------------------	---------------------	---------------------	---------------------	---------------------	---------------------	---------------	---------------	-------------	---------------

- (1) Via S.S. Carthaginian
 (2) " Clipper Durango
 (3) " " Siberian
 (4) Parcel Post

- (A) 300 more sheets than originally ordered. Probably why the 5¢ was not issued engraved. A large unusual balance was overprinted for the war-time Tax stamp and still some were destroyed.
 (B) There is no record of shipment of the 5000 packets.
 (C) This is 400 more than ordered. 100 - 6¢ type II and 300 - 5¢

1910

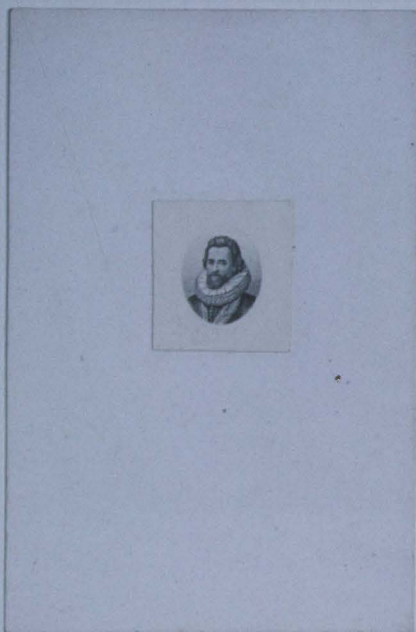
NEWFOUNDLAND

Whitehead Morris Co.
MacDonald & Sons

ESSAYS

ON CARDBOARD

.0125
Engraved



Vignette of 1^d - This engraving
looks very much like De la Rue work.
King James.

Vignettes probably also exist for the 2^d (Gug),
6^d (Bacon), 12^d (Edw VII) and 15^d (Geo V)

A die proof of the 1^d in green was sold in
the SA Brown Sale

See No die proof in 603

1 known - very rare

87

1 1058

1910

NEWFOUNDLAND

Whitehead Morris Co.

ESSAYS



Enlargement of the 1st vignette - note
the excellent detail.

1911

NEWFOUNDLAND

Whitehead Morris Co.

LARGE DIE PROOFS

ON WOVE .00350

A. Alexander & Sons

Engraved

Color of Issue



Die size 100 x 76mm

See note on black die proof.

This was prepared after the lithographed issue and was probably for the Engraved issue.

1 2064

1910

NEWFOUNDLAND

Whitehead Morris Co.
MacDonald & Sons

LARGE DIE PROOFS

ON CARDBOARD .0125

Engraved



Engraved by Macdonald - printed & perforated by Whitehead Morris

See 12^d. These are I believe the original Trial Color Proofs.
The same colors are on the 12^d proofs.

1 2058

94

1910

NEWFOUNDLAND

*Whitehead Morris Co.
A. Alexander & Sons*

LARGE DIE PROOFS
TRIAL COLOR

ON CARDBOARD .0100
Engraved



see 109. I believe a red also exists

1 3084

1910

NEWFOUNDLAND

Whitehead Morris Co.
A. Alexander & Sons

LARGE DIE PROOFS
TRIAL COLOR

ON CARDBOARD .Q125
Engraved



See 9^a and 12^a plate prints. - I believe these are color trials
for the lithographed issue

1 4064

#101

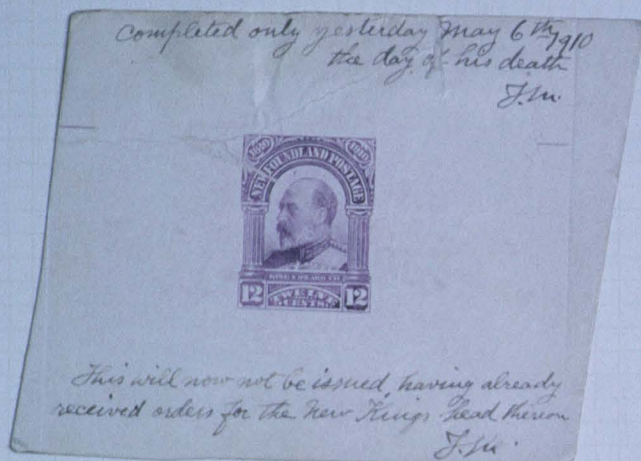
1910

NEWFOUNDLAND

Whitehead Morris Co.
MacDonald & Sons

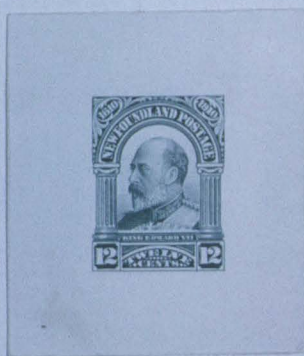
LARGE DIE PROOFS

ON CARDBOARD .0125
Engraved



A very rare die proof - The die was finished on the day of the death of King Edward VII. In spite of the note on the proof the stamp was issued. The 15^d value had the vignette of King George V his successor

S. Harris has one also with me.



These colors with a light blue (see #9) are I believe the original Die Proofs used as color trials.

1 3058

#96

1910

NEWFOUNDLAND

Whitehead Morris Co.

Completed only yesterday May 6th 1910
the day of his death
J.M.



This will now not be issued, having already
received orders for the new King's Head thereon
J.M.

Enlargement of the original 12" die proof.

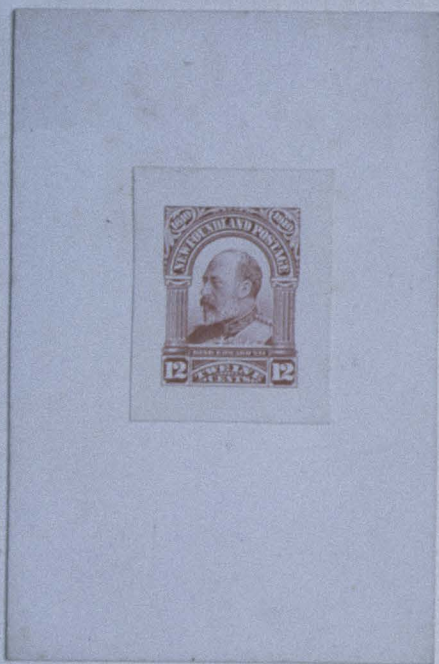
1910

NEWFOUNDLAND

*Whitehead Morris Co.
MacDonald & Sons*

SMALL DIE PROOFS

ON CARDBOARD .0125
Engraved



This die proof and the vignette of the 1[¢] are believed to have come from the effects of the engraver. The board both are mounted on are alike and of the same size. More may exist. This color not like later 10[¢] die and 12[¢] plate proof. Very rare - 1 known.

1 4058

#96

1910,

NEWFOUNDLAND

Whitehead Morris Co.
A. Alexander & Sons

PLATE PROOFS
TRIAL COLOR

ON CARDBOARD .0100
Engraved



These were evidently part of a transfer plate made from the die by a roller. It was probably 10 wide note corner marks. Or it is the start of the plate for the engraved stamp? Note second line



This proof has been discolored by age. It is the same color as the pair above and the corner mark LL indicates it came from the strip above. The red ink used evidently changed color in a sulphur atmosphere. This is the same red as on the second proofs of the 10^d

1 5064

#102

1910

NEWFOUNDLAND

Whitehead Morris Co.

LARGE DIE PROOFS

ON WOVE .0085

MacDonald & Sons

CREAM
Engraved



10.2 Cms x 7.8 Cms. Larger than Perkins Bacon. See 15th Coronation

As this Die was prepared after death of King Edw VII
These large proofs were probably prepared for submission to
and approval of King Geo V in May 1910. Note absence
of marks at side which show on black prints. Probably made
have owned 1 other before hardening.

1 0066

#97

1810

NEWFOUNDLAND

Whitehead Morris Co.

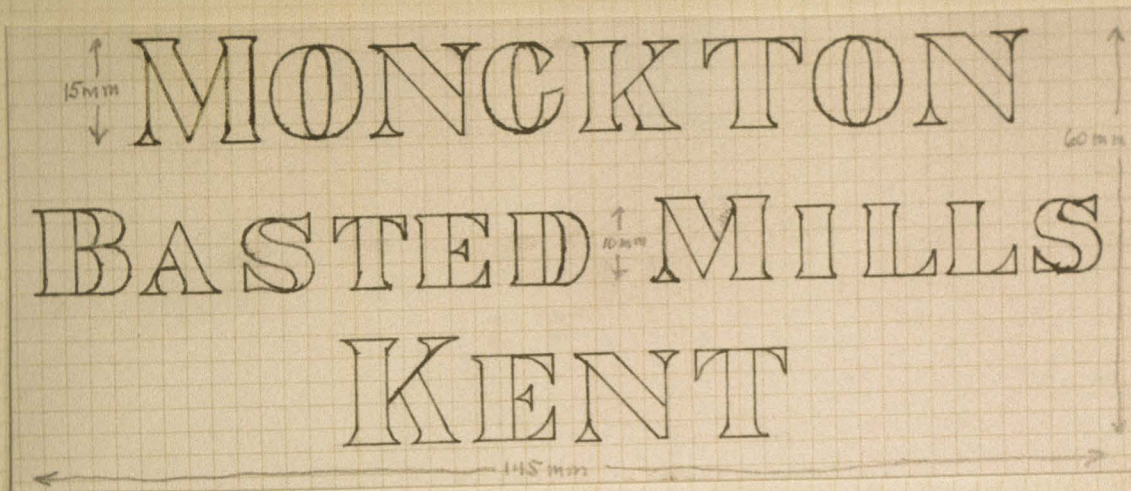
LARGE DIE PROOFS

ON WOVE .00550

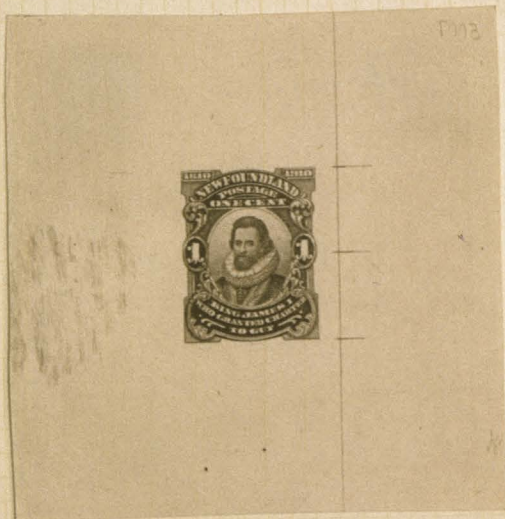
MacDonald & Sons

Engraved

WATERMARKED



This is reproduction of watermark



Note reversed number 5007

These black die proofs on watermarked paper were probably made after the printing plates were made. The 1^a, 2^a, 5^a, 8^a & 15^a have the three locator marks along the side, which may have aided in making transfer plates for litho

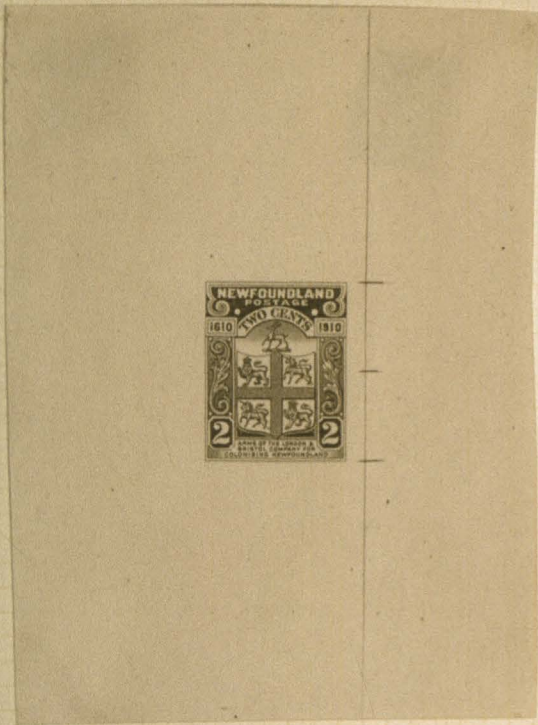
1310

NEWFOUNDLAND

Whitehead Morris Co.
MacDonald & Sons

LARGE DIE PROOFS
Engraved

ON WOVE .00550
WATERMARKED



Note oblongizing spelling with "S"



1 2066

888 - 889

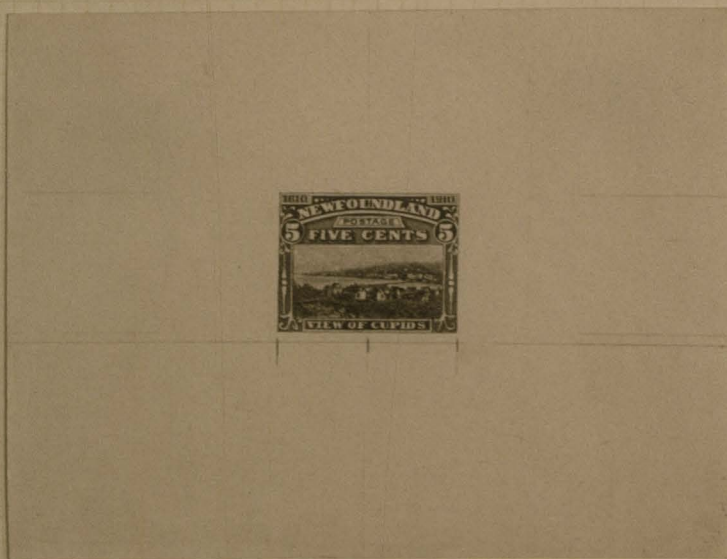
1910

NEWFOUNDLAND

Whitehead Morris Co.
MacDonald & Sons

LARGE DIE PROOFS
Engraved

ON WOVE, 00550
WATERMARKED



1 3066

90 - # 91

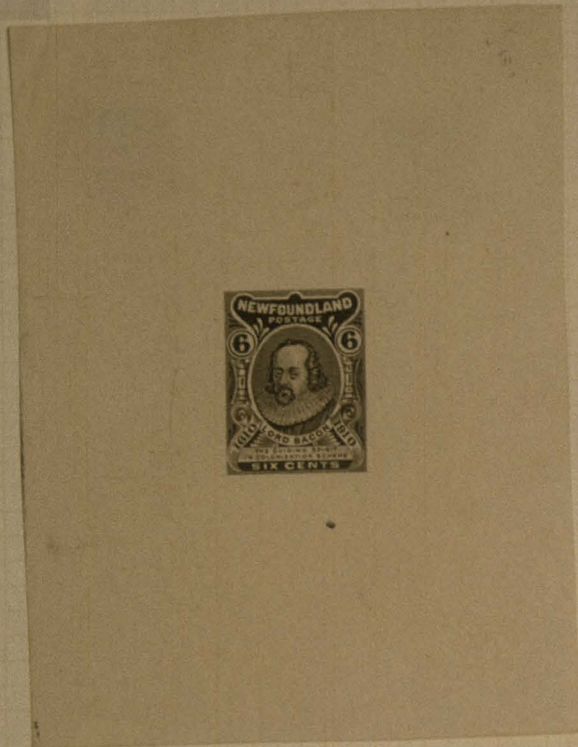
1910

NEWFOUNDLAND

Whitehead Morris Co.
MacDonald & Sons

LARGE DIE PROOFS
Engraved

ON WOVE .00550
WATERMARKED



← N.B.

Vertical lines in tablet

Die II correct - 'Z' but not die for engraved issue



Note Color Spec - "Burnt Sienna - Chrome"
See large die proof 1911 - # 99

i 4066

92 - # 93

1910

NEWFOUNDLAND

Whitehead Morris Co.
MacDonald & Sons

LARGE DIE PROOFS
Engraved

ON WOVE .00550
WATERMARKED



Note reversed number H903 shading left cloud.
Die sinkage 124mm x 71mm



Note reversed number H927 shading in sky.
Die sinkage 125mm x 74mm

1 5066

#94 - #95

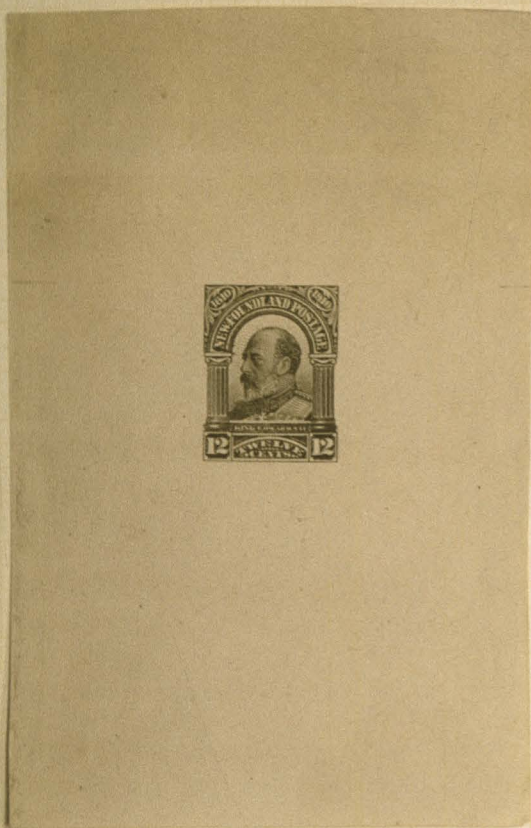
1810

NEWFOUNDLAND

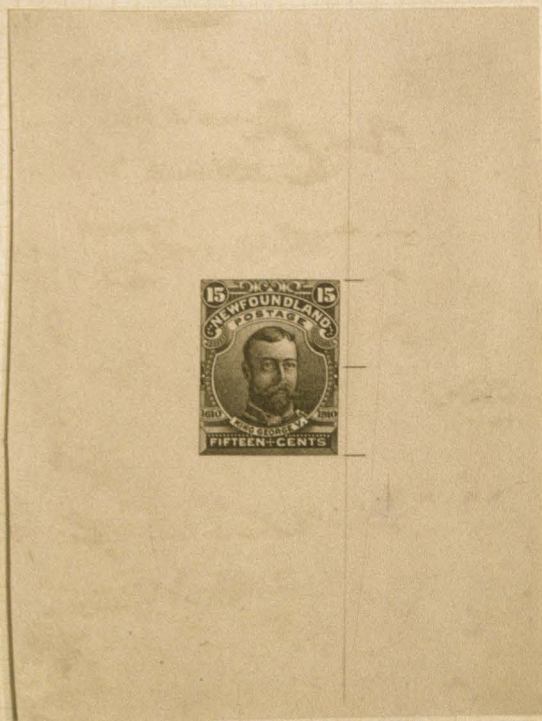
Whitehead Morris Co.
MacDonald & Sons

LARGE DIE PROOFS
Engraved

ON WOVE .00550
WATERMARKED



shading over head.



1 6066

#46-47