

NEWFOUNDLAND

ESSAYS AND PROOFS

AMERICAN BANK NOTE CO. OTTAWA.

1920

NEWFOUNDLAND PAPER MONEY



A \$ 1.00 BILL FROM THE 1920 PRINTING



A \$ 2.00 BILL FROM THE 1920 PRINTING.

NEWFOUNDLAND

ESSAYS AND PROOFS

1922

TEHEAD MORRIS CO.

PHOTOGRAPHIC DESIGNS

LA RUE



REJECTED 18-12-22



APPROVED 16 APRIL 23

THE SECOND DESIGN SUBMITTED 15 JANUARY 1923 APPEARS THE SAME AS THE FIRST

no recall as non-use

NEWFOUNDLAND

ESSAYS AND PROOFS

1922

WHITEHEAD MORRIS
DE LA RUE

PHOTOGRAPHIC DESIGNS



THE DESIGNS SUBMITTED 27 NOVEMBER 1922 WERE LETTERED 'A' THROUGH 'S'.

NEWFOUNDLAND

ESSAYS AND PROOFS

1922

HEAD MORRIS CO.

PHOTOGRAPHIC DESIGNS

A RUE



REJECTED 18 & 23-12-22



THE APPROVED DESIGN

NEWFOUNDLAND

ESSAYS AND PROOFS

1922

TEHEAD MORRIS CO

PHOTOGRAPHIC DESIGNS

A RUE



NEWFOUNDLAND

ESSAYS AND PROOFS

1922

TEHEAD MORRIS CO.

A RUE

PHOTOGRAPHIC DESIGNS

27 Novem. 22.



I

27 Novem. 22.



J

NEWFOUNDLAND

ESSAYS AND PROOFS

1922

WHITEHEAD MORRIS CO.

PHOTOGRAPHIC DESIGNS

DE LA RUE



NEWFOUNDLAND

ESSAYS AND PROOFS

1922

HEAD MORRIS CO

PHOTOGRAPHIC DESIGNS

A RUE



ACCIDENTLY REJECTED 23-12-22



ACCIDENTLY APPROVED 23-12-22

ESSAY 'V' WAS ISSUED AS A STAMP IN 1924. IT IS DIFFICULT TO SEE HOW IT
BE APPROVED 23-12-22 WHEN THE DESIGN WAS NOT ISSUED UNTIL 15 JAN 1923

NEWFOUNDLAND

ESSAYS AND PROOFS

1922

WHITEHEAD MORRIS CO.

PHOTOGRAPHIC DESIGNS

DE LA RUE



REJECTED 18-12-22 BUT
ACCIDENTLY PASSED 23 - 12-22

THIS DESIGN WAS ISSUED AS A STAMP IN EARLY 1924

NEWFOUNDLAND

ESSAYS AND PROOFS

1922

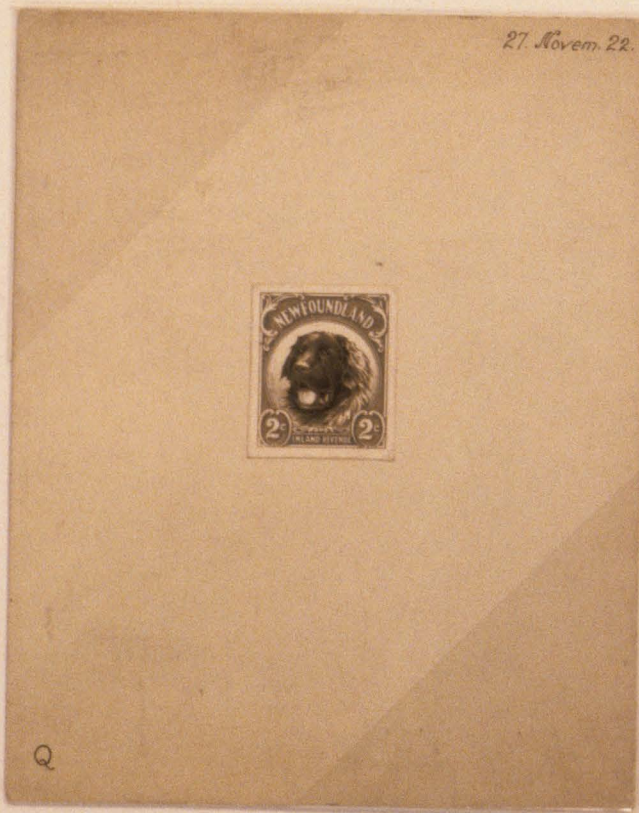
WHITEHEAD MORRIS CO
DE LA RUE

ON WOVE .0037

ESSAYS



IS PHOTOGRAPHIC ESSAY IS TYPICAL
THE NINETEEN DESIGNS SUBMITTED
R APPROVAL 27 NOV 1922.



A PLATE WAS MADE FROM THIS DIE
AND PROOFS PREPARED BUT THE STAMPS
WERE NEVER ISSUED.

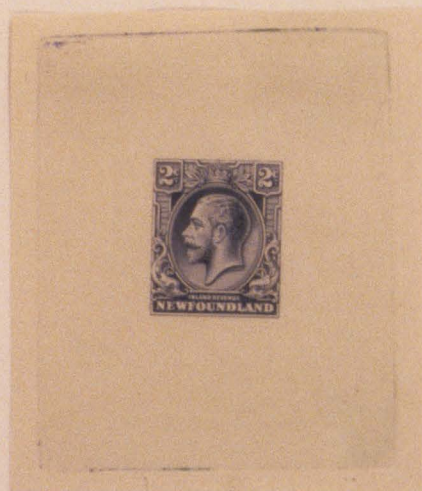
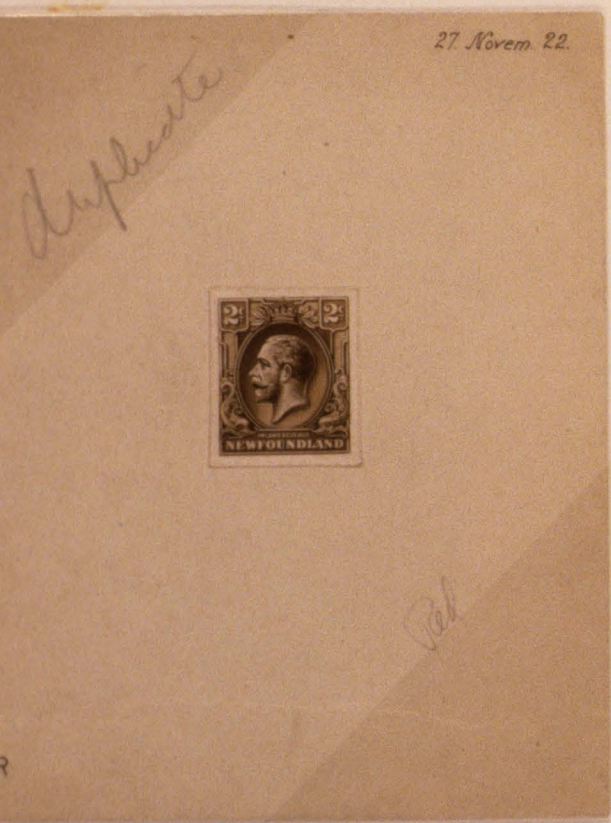
NEWFOUNDLAND

ESSAYS AND PROOFS

1922

ESSAYS

WHITEHEAD MORRIS & CO
E LA RUE



NEWFOUNDLAND

ESSAYS AND PROOFS

1922

WHITEHEAD MORRIS CO.

PHOTOGRAPHIC DESIGNS

LA RUE



NINETEEN DESIGNS WERE SUBMITTED ON 27 NOVEMBER 1922. SOME WERE ACCEPTED, SOME REJECTED.

1730

NEWFOUNDLAND

ESSAYS AND PROOFS

1923

WHITEHEAD MORRIS CO

ON WOVE .0035

LA RUE

PROGRESSIVE DIE PROOFS



ON THIS PROOF THE
BACKGROUND IS IN
WATERCOLOR.

NEWFOUNDLAND

ESSAYS AND PROOFS

1923

WHITEHEAD MORRIS CO

ON WOVE .0035

DE LA RUE

UNFINISHED DIE PROOFS



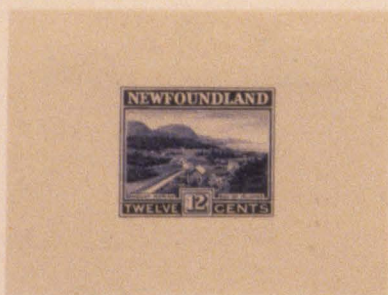
NO SHADING BELOW 3'S
AT BOTTOM.
DATED 9-5-23



INCOMPLETE SHADING
IN SKY & WATER.



NO SHADING AROUND 12
DATED 10-2-23



NEWFOUNDLAND

ESSAYS AND PROOFS

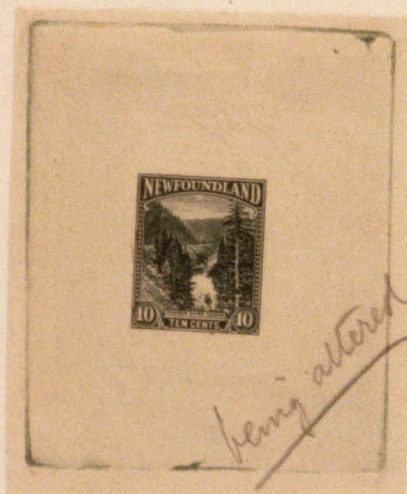
THE HEAD MORRIS CO.

1923

ON WOVE .0035

A RUE

COMPLETED DIE PROOFS



THESE ARE IN THE SAME COLOR AS THE PROOF DATED 10 MARCH 23

NEWFOUNDLAND

ESSAYS AND PROOFS

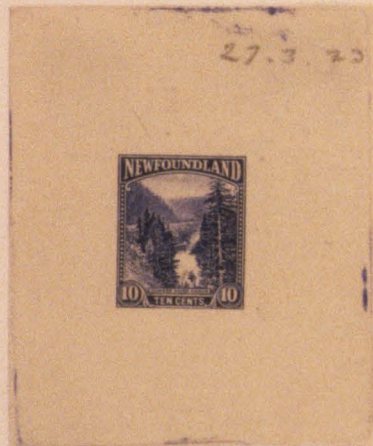
1923

WHITEHEAD MORRIS CO

ON WOVE .0035

LA RUE

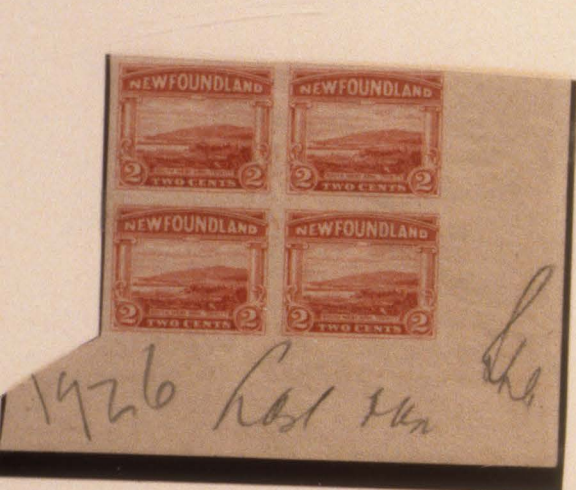
COMPLETED DIE PROOFS



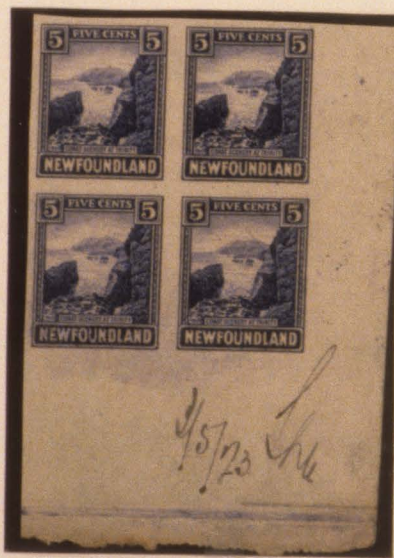
NEWFOUNDLAND

WHITEHEAD MORRIS
DE LA RUE

STAMP PAPER .0035 1923
UNGUMMED IMPERFORATE RECORD SHEETS



THIS IS THE ONLY GUMMED SHEET. FROM THE LAST RUN.



THESE BLOCKS ARE FROM RECORD SHEETS BUT BEING FROM THE FIRST PRINTING, THEY PROBABLY ARE PLATE PROOFS. THE 1¢, 2¢, 8¢ AND 11¢ HAVE BEEN KNOWN PREVIOUSLY. ALL OTHERS ARE NEW. SHEETS OF THE 1¢, 2¢, 4¢, 5¢ AND 11¢ IMPERFORATE AND GUMMED HAVE RECENTLY BEEN OFFERED AT AUCTION. (1967)

-1770

NEWFOUNDLAND

WHITEHEAD MORRIS

1923

STAMP PAPER .003

DE LA RUE

PLATE PROOFS

UNGUMMED, IMPERFORATE



Colour correct A.W.K. 11/6/23



Colour correct A.W.K. 15/6/23.

NEWFOUNDLAND

WHITEHEAD MORRIS

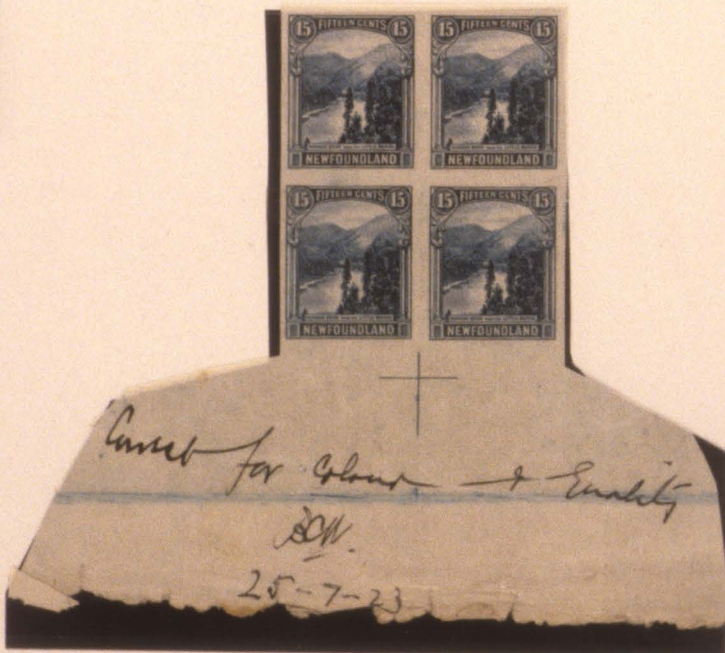
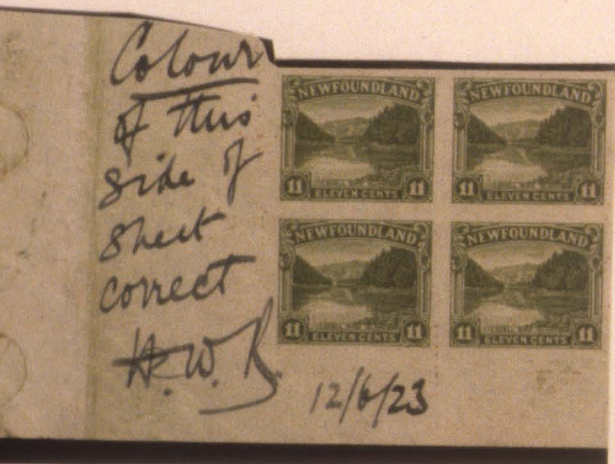
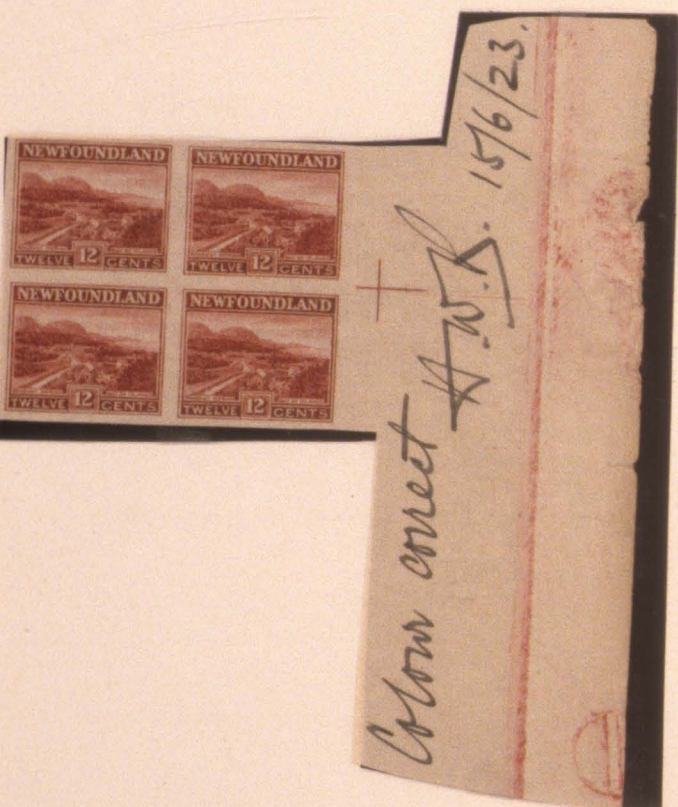
STAMP PAPER .003

1923

DE LA RUE

UNGUMMED, IMPERFORATE

PLATE PROOFS



NOTE THAT THE 15¢ WAS PROOFED TWICE, ONCE 9 JUNE 1923 AND
SECONDLY 25 JULY 1923. IN BETWEEN THE PLATE WAS PROBABLY BURNISHED.
THIS WOULD IMPROVE THE QUALITY OF THE LINES.

NEWFOUNDLAND

ESSAYS AND PROOFS

1923

WHITEHEAD MORRIS CO

ON WOVE .0035

DE LA RUE

TRIAL COLOR PLATE PROOFS



FROM THE MANY LINES ON THE PLATE 'BEFORE' MEANS BEFORE BURNISHING.



COLOR OF ISSUE

THE 24¢ VALUES WERE PROOFED IN FEB. 1924.

NEWFOUNDLAND

ESSAYS AND PROOFS

1923

WHITEHEAD MORRIS CO

ON WOVE .0035

LA RUE

RECORD SHEETS

IMPERFORATE



NOT GUMMED



DATED 9.5.23



GUMMED.



NEWFOUNDLAND

ESSAYS AND PROOFS

1923

TEHEAD MORRIS CO.

TRIMMED DIE PROOFS

ON WHITE WOVE .00400

LA RUE

GUMMED



THE TRIMMED PROOFS ABOVE HAVE BEEN REMOVED FROM A PAGE ON WHICH THEY HAD BEEN MOUNTED AS A COLOR TRIAL SET. THEY ARE ALL DIE PROOFS TRIMMED AFTER GUMMING. THE DE LA RUE RECORDS HAVE SIMILAR SETS OF PROOFS IN THEIR COLLECTION.



GUMMED

FROM SET



NEWFOUNDLAND

ESSAYS AND PROOFS

1923

WHITEHEAD MORRIS CO

ON WOVE .0035

DE LA RUE

COLOR TRIAL DIE PROOFS



SEVERAL SETS OF COLOR TRIALS WERE SUBMITTED FOR THIS ISSUE. IT IS BELIEVED THAT THE 5¢ DIE WAS USED FOR THIS PURPOSE. THE EARLY SETS WERE ON THE ABOVE PAPER (.0035). THE SECOND SET SENT ON 9 FEB 1923 WAS ON .003 PAPER.

NEWFOUNDLAND

ESSAYS AND PROOFS

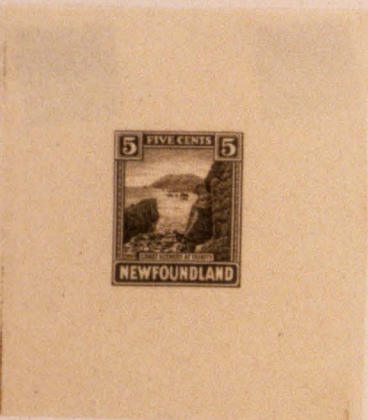
1923

WHITEHEAD MORRIS CO

ON WOVE .003

DE LA RUE

COLOR TRIAL DIE PROOFS



DARK SEPIA



ORANGE



GREY



THE COLOR TRIAL SET SENT 9 FEB 1923 CONTAINED THREE ADDITIONAL COLORS.

DARK SEPIA, ORANGE & GREY. THESE COLORS AND OTHERS FROM THIS SET ARE SHOWN

ABOVE. FIVE UNKNOWN OTHER COLORS WERE SENT 12 FEB 1923.

NEWFOUNDLAND

ESSAYS AND PROOFS

1923

TEHEAD MORRIS CO.

LARGE DIE PROOFS

ON YELLOWISH WVE .00300

LA RUE

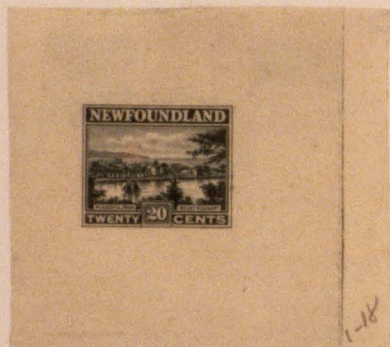
IN COLOR OF ISSUE



GUMMED



THE BROWN IS THE
FINAL APPROVED COLOR



THIS STAMP WAS SUBMITTED FOR DESIGN
APPROVAL 18 JAN AND FOR COLOR ON
10 MARCH 1924. THE ORIGINAL GREEN
COLOR WAS DISAPPROVED 19 MARCH AND
THE BROWN SHADE APPROVED.

-1245

X

NEWFOUNDLAND

1923

WHITEHEAD MORRIS CO.

STAMP PAPER .003

DE LA RUE

GUMMED, PERFORATED

SPECIMEN O/P BY DE LA RUE



SEE PAGES OF BLOCKS FROM RECORD SHEETS - NOTES 1 SPECIMEN BOOK

-1P46

NEWFOUNDLAND

ESSAYS AND PROOFS

1924

WHITEHEAD MORRIS CO.

PHOTOGRAPHIC DESIGN

DE LA RUE

ESSAYS



THIS PHOTOGRAPHIC DESIGN OF A NEW 4¢ STAMP WAS PREPARED 1 SEPTEMBER 1924.
E DESIGN OF THE ESSAY WAS APPARENTLY NEVER ACCEPTED.

NEWFOUNDLAND

ESSAYS AND PROOFS

1923

WHITEHEAD MORRIS CO.

TRIMMED DIE PROOFS

ON WHITE WOVE .00400

DE LA RUE

GUMMED



THE GROUP ABOVE WERE BACKED, BUT WERE PREPARED AS THE

ONE BELOW



IN THE DE LA RUE COLLECTION PROOFS CUT LIKE THESE
GUMMED AND PASTED IN RECORD BOOKS.

NEWFOUNDLAND

ESSAYS AND PROOFS

WHITEHEAD MORRIS CO.

DE LA RUE

ON YELLOWISH WOVE .00350

1923

LARGE DIE PROOFS



THESE LARGE DIE PROOFS EXIST AS ABOVE

IN 16 COLORS

ON PAPER USED FOR THE ORIGINAL TRIAL

COLORS

NEWFOUNDLAND

ESSAYS AND PROOFS

1923

WHITEHEAD MORRIS CO.
DE LA RUE

LARGE DIE PROOFS
IN COLOR OF ISSUE

ON YELLOWISH WVE .00350

GUMMED



THIS STAMP WAS SUBMITTED TWICE FOR COLOR
APPROVAL, THE FIRST TIME FEB. 9-12, 1922
AND AGAIN MARCH 10, 1923.

NEWFOUNDLAND

ESSAYS AND PROOFS

1928

WHITEHEAD MORRIS CO.

TRIAL COLOR PROOFS

DE LA RUE



THIS IS THE SECOND SET OF COLOR TRIALS, SUBMITTED 3 JUNE 1927

DUPLICATES EXIST IN THE DE LA RUE COLLECTION

1923

NEWFOUNDLAND

*Whitehead Morris Co.
De La Rue*

TRIMMED DIE PROOFS

ON WOVE .00350
YELLOWISH



These could be part of 13 shades furnished as color scheme 2 for 1923 Issue

1 0083

#133

1923

NEWFOUNDLAND

Whitehead Morris Co.
De La Rue

LARGE DIE PROOFS

ON WOVE .00400
WHITE



These could be part of 13 shades furnished as color scheme 2 for 1923 issue
see 144
June 2, 1927
#135

1 0084

1923
NEWFOUNDLAND

*Whitehead Morris Co.
De La Rue*

TRIMMED DIE PROOFS

ON WOVE .00400
WHITE GUMMED



*These could have been part of 12 shades furnished as color scheme 3 for 1922 issue
see 144*

135

1 0085

1923
NEWFOUNDLAND

Whitehead Morris Co
De La Rue

PLATE PROOFS

ON WOVE .00350
YELLOWISH



Alone

Not issue color

1 0086

#136

1923

NEWFOUNDLAND

*Whitehead Morris Co
De La Rue*

LARGE DIE PROOFS

ON WOVE .00350
WHITE



1 0087

#139

1923
NEWFOUNDLAND

*Whitehead Morris Co
De La Rue*

TRIMMED DIE PROOFS

ON WOVE .00350
WHITE



1 0088

#140

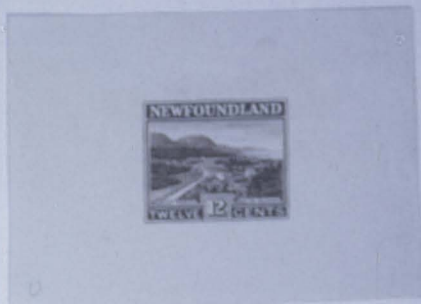
1923

NEWFOUNDLAND

*Whitehead Morris Co
De La Rue*

LARGE DIE PROOFS

ON WOVE .00350
WHITE



No shading around numeral 12

1 0089

#143

1923

NEWFOUNDLAND

*Whitehead Morris Co.
De La Rue*

LARGE DIE PROOFS

ON WOVE .00350
WHITE



Unfinished



Finished

F142

1 0030

1923

NEWFOUNDLAND

*Whitehead Morris Co.
De La Rue*

LARGE DIE PROOFS

ON WOVE .00350
YELLOWISH



twentys in blue

#143

1 0091

1923

NEWFOUNDLAND

Whitehead Morris Co.
De La Rue

TRIMMED DIE PROOFS
OR
PLATE PROOFS

ON WOVE .00400
YELLOWISH



appears to have
been quinned



These could be part of 13 shades. Furnished as color scheme 3 for H28 issue
see #135 June 3, 1927

#144

1 0092

NEWFOUNDLAND

De La RUE'S NEWFOUNDLAND 1911 - 1928

The 1923 - 1924 Pictorial Issue.

Satisfied with the work of De La Rue on the Caribou issue, Whitehead Morris turned to him again for preparation of a new Pictorial issue for 1923. New pictures, new values and even stamps for Air Mail, Revenue use and Postage Due duties were desired. Mr Gauntlet of W/M personally delivered photographs and instructions to De La Rue on November 7, 1922.

A series of designs, photographic reductions of sketches, colored sepia, red, green or blue were given to W/M on November 27th. They were neatly mounted in shadow box format on this card in postage stamp size. Initially 19 designs, lettered from A to S, were presented. With the exception of four values, the 3 ¢, 6 ¢, 20 ¢ (replaced by new designs) and the 24 ¢, all the rest were approved for printing by December 23, 1922. The designs that were rejected, replaced by new ones labeled T to V, were appended on January 15, 1923. All are shown with the exception of "O" which is missing. The original 24 ¢ design was approved later, but orders were delayed until January 14, 1924. The 20 ¢ stamp, second design, was approved and ordered January 18, 1924.

The Air Mail and Revenue designs were evidently approved, but never ordered. Irregardless plates were made of the three designs and plate proofs (in reality plate essays) produced. The Postage Due design remains only in photo essay form.

This is the first time De La Rue die proofs are seen in progressive as well as final state. The progressive proofs are mainly without final shading in the design. The five cent die was completed early in 1923, and on February 9th a color scheme prepared from this die was submitted for approval. On February 12th another swatch of five different colors were dispatched. Examples remain in full and trimmed 5 ¢ die proofs. There are color trials for the later stamps, usually from their own dies. The 24 ¢ also has plate proof color trials. An interesting example shows the 6 ¢ plate before and after burnishing to remove scratches implanted on entering the plate. A small plate of two each of the 1 ¢, 2 ¢ and 11 ¢ in green is shown. Why it was prepared is unknown.

Imperforate Record sheets from the files contain notes relating to color and dates of printing. These were the early strikes of May and June 1923. The quality of the 15 ¢ plate was questioned and a second trial after further burnishing was approved 25 July 1923. Certain other blocks and singles illustrate items that were saved in the Color Book. The 3 ¢ was printed in a lighter color in 1926. Nine values from the De La Rue "SPECIMEN" book have been saved and are shown. For the first time a plate number is noted among the used stamps, No. 2 for the 3 ¢ value.

Sample booklets of low value Caribou stamps had been provided previously. On March 8, 1926 Booklets of 1 ¢ and 2 ¢ stamps and 2 ¢ coil stamps were requested. De La Rue complied, offering a booklet with sixteen 2 ¢ stamps and eight 1 ¢ stamps. The booklets being of smaller size required that the bottom row of two stamps be folded over. A front and back cover, printed with advertising both sides, and five interleaf pages with advertising completed the booklets. The revenue from the advertisements would pay for the booklets. 1000 sheets of 100 stamps of the 1 ¢ and 2000 sheets of the 2 ¢ would produce 5000 booklets with panes of 20 stamps left over from each sheet. These could be combined into sheets of 100, De La Rue stated. 10,000 booklets were ordered June 18, 1926. Remember the request for coil stamps in 1918. A sample roll was dispatched with the booklets and W/M advised that they would only be perforated crosswise, and slit lengthwise. The trail ended here.

The Colonial Secretary was advised on May 19, 1924 that Mr. W. J. Edgar of St. John's had become the agent for Whitehead Morris in Newfoundland. Probably one of his early acts was to present the suggested new 4 ¢ essay, prepared September 1, 1924 by De La Rue. No action seems to have been taken to produce this design.

2-1520

NEWFOUNDLAND

WHITEHEAD MORRIS

PERF. COMB 13.8 x 14

1923

DE LA RUE

LINE 13.7 & 14

PICTORIAL ISSUE



ALL EXCEPT THE 20¢ & 24¢ VALUES WERE ISSUED 9 JULY 1923

THESE VALUES WERE ISSUED IN APRIL 1924

2-1590

NEWFOUNDLAND

WHITEHEAD MORRIS

STAMP PAPER .003

1923

DE LA RUE

GUMMED, PERFORATE

RECORD SHEETS



THESE BLOCKS AND SINGLES FROM RECORD SHEETS WERE PROBABLY PRINTED IN 1923. THE EXCEPTION IS THE 20¢ FIRST PRINTED IN 1924. THE "SPEC" OR "SPECIMEN BOOK" WAS LIKELY THE DE LA RUE "COLLECTION"

B
52

2-7600

NEWFOUNDLAND

WHITEHEAD MORRIS

1923

STAMP PAPER .003

DE LA RUE

RECORD SHEETS

GUMMED, PERFORATE



THESE BLOCKS AND SINGLES, POSSIBLY FROM THE FIRST PRINTINGS, SHOW THAT ONE STAMP WAS PLACED IN THE DE LA RUE COLLECTION.

2-1610

NEWFOUNDLAND

WHITEHEAD MORRIS

STAMP PAPER .003

1923

DE LA RUE

GUMMED, PERFORATE

RECORD SHEETS



A LIGHTER, BROWNER SHADE OF THE 3¢ WAS PREPARED FOR USE IN 1925. ONE STAMP FROM EACH SHEET WAS REMOVED FOR THE COLOR BOOK.

2-1620

NEWFOUNDLAND

WHITEHEAD MORRIS

STAMP PAPER .003

1924

DE LA RUE

GUMMED PERFORATE

RECORD SHEETS



TWO PRINTINGS OF THE 24¢ WERE MADE, THE FIRST ON 21 FEB 1924.

A TOTAL OF 22,520 STAMPS WERE ISSUED. THE LARGE BLOCK HAS A CREASE IN THE PAPER WHICH WAS A PRINTING ERROR. THE SMALL BLOCKS SHOW IMPERFECT PRINTING.

"1 COL SCHEME" INDICATED ONE STAMP TO THE COLOR REFERENCE BOOK.

B
55

2-1630

NEWFOUNDLAND

WHITEHEAD MORRIS

1923

STAMP PAPER .003

DE LA RUE

RECORD SHEETS

GUMMED, PERFORATE



THERE WAS ONLY ONE PRINTING OF THE 9¢ AND 12¢. THE 20¢ WAS FIRST PRINTED ON 5 APRIL 1924. ALL THESE BLOCKS WERE FROM THE FIRST PRINTING.

8
2

NEWFOUNDLAND

WHITEHEAD MORRIS

ISSUED STAMPS

1923

DE LA RUE

BOOKLET PANES

PICTORIAL ISSUE



ISSUED IN 1926

THIS WAS THE FIRST BOOKLET OF STAMPS PRODUCED FOR NEWFOUNDLAND. THERE WERE TWO SHEETS OF THE 2¢ AND ONE OF THE 1¢ IN EACH BOOKLET. FIVE ADVERTISING INTERLEAVES AND A FRONT AND BACK COVER COMPLETED THE BOOKLET. THE NEXT BOOKLET WAS NOT ISSUED UNTIL 1932. 10,000 BOOKLETS WERE ISSUED. THE LOWER PAIR WAS FOLDED OVER TO FIT THE COVERS, AND THESE PERFORATIONS ARE USUALLY WEAK.

NEWFOUNDLAND

WHITEHEAD MORRIS

ISSUED STAMPS

1923

DE LA RUE

BOOKLET

PICTORIAL ISSUE

SOME OF OUR SPECIALTIES
 Saxone and Cable Footwear
 Yardley's Toilet Requisites
 Kolynos' Tooth Paste
 Williams' Toilet Goods
 Normarch Four-in-One Weather Coats
 Westminster Cigarettes
 Jamaica Cigars
 Victor Victrolas and Victor Records
 Estey Pianos and Organs

Labradorite Souvenirs.



ST. JOHN'S, NEWFOUNDLAND.

BACK



**NEWFOUNDLAND'S
 PREMIER MAIL ORDER HOUSE
 FOR SERVICE AND SATISFACTION**

Fire Insurance
 Agents for Law Union and Rock Insurance Co., Ltd.
 London & Lancashire Insurance Co., Ltd.

Dry Goods—Hardware—Groceries—
 Jewellery—Books and Stationery—
 and all General Merchandise.

FRONT

**NEWFOUNDLAND POSTAL
 TELEGRAPHS, RING 436.**

Local, exclusive of address, 10 words 25 cents.
 Canada and United States, exclusive of
 address, 10 words 90 cents to \$1.20.
 Great Britain 6 cents and 8 cents per word
 counting address and signature.

Wireless to Ships
 Coastwise, 12 cents per word.
 Transatlantic, 27 cents per word.
 Labrador and Straits Bell Isle, 12 cents to
 14 cents per word.

**RATES OF POSTAGE FROM
 NEWFOUNDLAND.**

Inland 3 cents 1st oz.
 " 2 cents extra oz. or fraction.
 City 2 cents per oz.
 Empire 4 cents "
 U.S.A. 4 cents "
 Registration, local, 5 cents.
 " foreign, 10 cents.
 Parcels within Newfoundland and to and
 from Great Britain, Canada and the United
 States may be insured.

THE ROYAL STORES, LTD.

THE HOUSE FOR VALUE
 CAN SUPPLY YOUR EVERY
 NEED FOR THE HOME AND
 PERSONAL WEAR.

'LING'S
 Fishing Tackle,
 Gun, Ammunition, Etc.
 Groceries,
 and Cheapest
 Outfitters.
 Stationery
 Departments.
 St. John's, Newfoundland.

are one of
 tions of —
MORRIS LIMITED
for Engraving
Stationery
Description.
DON
 Newfoundland,
 St. John's.

& CO. LTD.
RELIABLE
WELLERS
AND
DIANS.
 Newfoundland a Speciality

FOOD WEAR
 "SIDE"
 Yarns
 Spuns
 RED BY
DOLLEN MILLS
 NEWFOUNDLAND

THESE ARE THE FIVE ADVERTISING INTERLEAVES.

2-1660

NEWFOUNDLAND

WHITEHEAD MORRIS

WHITE WOVE .004

1923

DE LA RUE

PICTORIAL ISSUE



B
60

2-1670

NEWFOUNDLAND

WHITEHEAD MORRIS

WHITE WOVE .004

1923

DE LA RUE

PICTORIAL ISSUE



B
61

2-1680

NEWFOUNDLAND

WHITEHEAD MORRIS

WHITE WOVE .004

1923

DE LA RUE

PICTORIAL ISSUE



2-1690

NEWFOUNDLAND

WHITEHEAD MORRIS

WHITE WOVE .004

1923

DE LA RUE

PICTORIAL ISSUE



3
2